



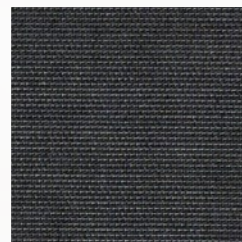
FABRICS & MESHES

Sunbrella Meshes & Fabrics in Stock

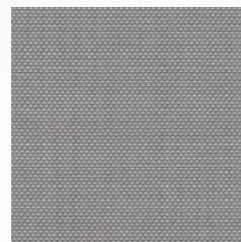
MESHES



Sunbrella
Sling Odyssey
5928 0043
AUGUSTINE DENIM



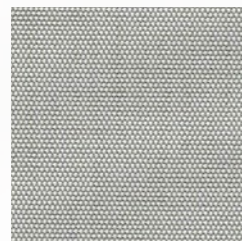
Sunbrella
Sling Odyssey
SLI 50045 18 137
LOGAN GRAPHITE



Sunbrella
Sling Odyssey
SLI 5928 44 137
AUGUSTINE SILVER

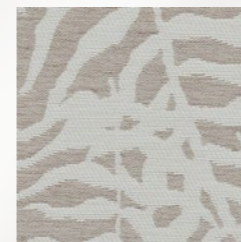


Sunbrella
Sling Odyssey
SLI 50045 06 137
LOGAN SAND

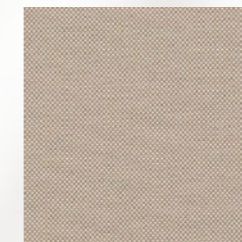


Sunbrella
Sling Odyssey
SLI 50143 10 137
SAILING SEAGULL

FABRICS



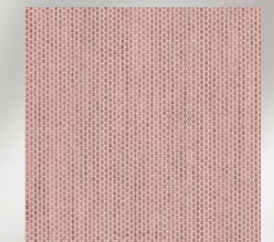
Sunbrella
Bahia Ikebana
IKE J 369 140
Uyuni
Class: E



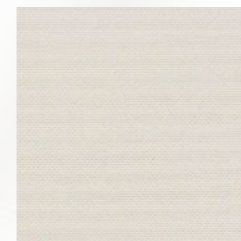
Sunbrella
Odyssey Natte
NAT 10150 140
Taupe Chalk
Class: C



Sunbrella
Odyssey Solids &
Stripes
SJA 3756 137
Lead Chine
Class: C



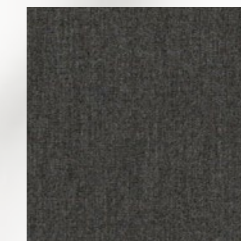
Sunbrella
Odyssey Solids &
Stripes
SJA 3965 137
Blush
Class: C



Sunbrella
Odyssey Natte
NAT 10020 140
White
Class: C



Sunbrella
Odyssey Solids &
Stripes
SJA 3729 137
Taupe
Class: C



Sunbrella
Odyssey Solids &
Stripes
SJA 3757 137
Flanelle
Class: C

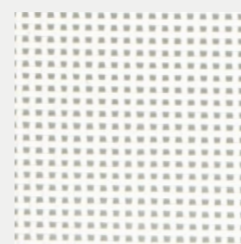


Sunbrella
Odyssey Solids &
Stripes
SJA 3778 137
Quadri Grey
Class: C

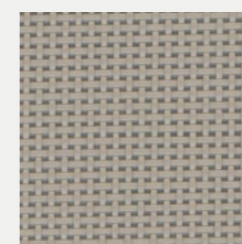
SERGE FERRARI

BATYLINE ISO

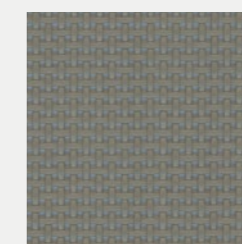
BATYLINE ISO



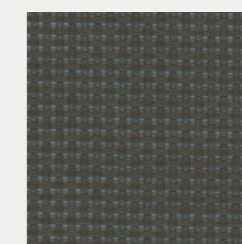
SNOW
7407-5001



INCENCE
7407-5376



ASH
7407-5014



COFFEE
7407-5015



ANTHRACITE GREY
7407-5700

Choose the mesh upholstery for the aluminum frame. Both options are mesh and included in retail price.

Batyline Iso offers excellent performance while withstanding spills, splatters and the hustle and bustle of high-traffic areas. Features wider mesh holes, resulting in a slightly transparent look.

MESH



TECHNICAL CHARACTERISTIC

Weight	500 g/m ² 14.7 oz/sqyd
Width	180 cm - 70.9 in.
Openess factor	22%
Tensile strength (warp/weft)	240/240 daN/5 cm
Elongation under load 20 daN (warp/weft)	≤2.5% / ≤2.5%
Abrasion resistance	>600,000 double rubs - Heavy Duty >120 000 cycles
Color fastness	GS=4 at 700h / >1,500 QUV
Mould resistance	Methods A, Excellent
Extreme working temperatures	-30°C / +70°C • -22°F / +158°F
Light fastness	8/8 for 1,000 h
Weather resistance	GS = 4 for 700 h
Quality	ISO 9001
Environment	ISO 14001
Energy	ISO 50001

Certifications, Labels, Warranty

Recyclable / Greenguard certification - FDES Certification - Base Classification - Eco Bau - Smart Yarn Technology - 5 years warranty

SUNBRELLA
SLING
ODYSSEY

SLING - ODYSSEY



SLI 50045 07 137
LOGAN SNOWY



IN STOCK

SLI 50143 10 137
SAILING SEAGULL



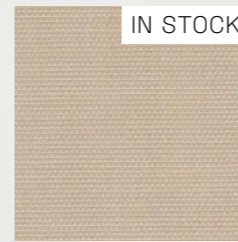
IN STOCK

SLI 5928 44 137
AUGUSTINE SILVER



IN STOCK

SLI 50045 18 137
LOGAN GRAPHITE

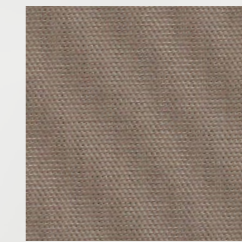


IN STOCK

SLI 50045 06 137
LOGAN SAND



SLI 50143 19 137
SAILING SPACE



SLI 50045 02 137
LOGAN TAUPE



IN STOCK

5928 0043
AUGUSTINE DENIM



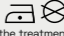
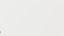
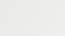
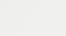
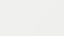
Choose the mesh upholstery for the aluminum frame. Both options are mesh and included in retail price.

Focusing on subtle patterns that read as textures, Sunbrella Sling allows you to achieve an elevated indoor aesthetic in an outdoor setting. Sunbrella Sling blends the strength of PVC with the softness of Sunbrella acrylic yarn for added comfort. Sunbrella Sling is ideal for crafting fully-upholstered furniture pieces for outdoor patios and other traditional sling applications.

MESH

SLING - ODYSSEY

PRODUCT SPECIFICATIONS

	STANDARDS NORMES	SLING AUGUSTINE	SLING LOGAN	SLING SAILING
INFO		20% Sunbrella® Acrylic, 80% PES - PVC 54" / 137 cm width Selvedge is Left / Right	58.8% Sunbrella® Non-Phthalate PVC, 22.1% Sunbrella® Polyester, 19.1% Sunbrella® Acrylic 54" / 137 cm width Selvedge is Left / Right	47.2% Sunbrella® Non-Phthalate PVC, 35% Sunbrella® Acrylic, 17.8% Sunbrella® Polyester 54" / 137 cm width Selvedge is Left / Right
VARRANTY		We stand behind our fabrics with a guarantee that's best in the industry: a 5-year limited warranty for upholstery fabrics, specialty fabrics and decorative shade fabrics.		
HOW TO CLEAN		For easy day-to-day maintenance of your Sunbrella fabric: 1-Brush off loose dirt before it becomes embedded 2-Wipe up spills as soon as they occur, and spot-clean fabric before stains set.		
ZERO LANDFILL		 For over 30 years, Sunbrella® has recycled its industrial wastes such as yarn and packaging. Today, every Sunbrella® manufacturing facility around the globe sends absolutely no waste to the landfill.		
COMPOSITION		11% Sunbrella® Acrylic 25% Polyester 64% PVC	19% Sunbrella® Acrylic 22% Polyester 59% PVC	35% Sunbrella® Acrylic 17.8% Polyester 47.2% PVC
FINISH		Water-Repellent & Stain-Proof		
MINIMUM USEFULL WIDTH	EN 1773	137		
WEIGHT	ISO 3801 g/sqm - g/m²	505	480	580
ROLL LENGTH	LM - ML	40		
SPRAY TEST	ISO 4920 Class/5	-		
COLOUR FASTNESS UV INDOOR	ISO 105B02 Class/8	8		
COLOUR FASTNESS TO WEATHER OUTDOOR	ISO 105B04 - 1000 H Class / 5	4-5		
WASH COLOUR FASTNESS 30°C	ISO 105C06 Class/5	5		
COLOUR FASTNESS DRY FRICTION	ISO 105X12 Class/5	5		
COLOUR FASTNESS WET FRICTION	ISO 105X12 Class/5	5		
CARE INSTRUCTIONS		      Ironing reinforces the treatment		

Cleaning
Vacuum regularly. Wipe with a damp cloth using soap and water or use proprietary upholstery shampoo. For deeper cleaning use bleach or alcohol.



CERTIFICATIONS

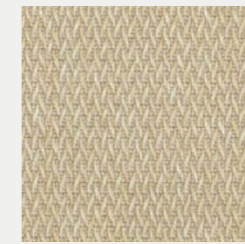


LIVIO

LIVIO



01



03



04



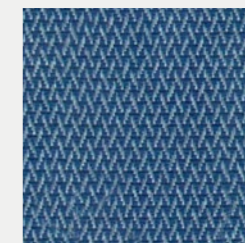
12



08



22



21



26



27



28

Livio comes in a range of 10 colours and creates a unique reflection of neutral backgrounds with crosswise yarns.

Class A



TECNICAL CHARACTERISTIC

QUALITY NAME		LIVIO
WIDTH		140 CM +/- 1 CM
WEIGHT		355 GR/M²
COMPOSITION		% 100 OLEFIN
TEST		STANDARD
PILLING		EN ISO 12945-2 : 2000 (5000 revs)
SEAM SLIPPAGE	WEFT	13936-2 : 2004
	WARP	
ABRASSION		EN ISO 12945-2 : 1998
COLOR	RUBBING	BS EN 105-X12 : 2001
	DRY	
	WET	4-5
LIGHT		BS EN 105-B02 : 1994
OIL REPELLENCY		ISO EN 14419
SPRAY TEST		BS EN ISO 1920
FLAMMIBILITY		EN ISO 1021-1
ANTI BACTERIAL		LIS L 1902

COLOR RESISTANCE

FASTNESS TO	STANDARD	Varies according to the value written next to the product name			
		LOD	OD	OD+	OD++
LIGHT	BS EN ISO 105-B02	7	7	7/8	8
WEATHERING	BS EN ISO 105-B04	6	6/7	7	7/8
UV	ASTM G-154 (1200 Hours)	4	4	4/5	5
WASHING	BS EN ISO 105-C06 40 C	4/5			
SEA WATER	BS EN ISO 105-E02	4/5			
POOL WATER	BS EN ISO 105-E03	4/5			
RUBBING	BS EN ISO 105-X12	4/5			

CARE AND MAINTANCE INSTRUCTIONS

- 1- Remove any residual soil by lightly brushing or scraping the stain by sponging down with water
 - 2- If further cleaning needed, apply a solution with soap an water.
Work the solution into stain by lightly scrubbing the area with sponge or very soft bristle brush
 - 3- Remove cleaning solutions with a clean soft towel or sponge to remove the stain and excess cleaning solution.
[Repeat step 2 and 3 until stain is removed.]
 - 4- Rinse the affected are throughly remove cleaning solution from the fabric
- Vacuum the fabric prior to cleaning
- Do not be alarmed if stain is not removed after first application and removal of cleaning solution
- If the fabric can be removed from furniture it may be cleaned in a mild soap and warm water (40 C°) solution in washing machine and dried in an environment also less then 40 C°.
- Do not steam press or dry in electric or gas dryers. Allow fabric to be air dried naturally

REMARKS

Do not leave your product after 50 C° outside temperature under directly sunlight

Results can be vary region by region

The values for the products my have a varition of +/- %5

Art Picture is for indoor use only

MIRELLA

MIRELLA



01



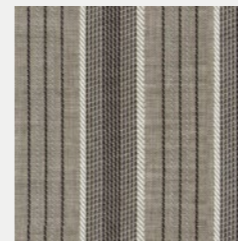
09



24



23



25

Mirella comes with 5 different compositions of thin and thick stripes. This mix is ideal to create out of the ordinary outdoor spaces.

Class A



TECNICAL CHARACTERISTIC

QUALITY NAME		MIRELLA	
WIDTH		140 CM +/- 1 CM	
WEIGHT		206 GR/M²	
COMPOSITION		% 100 OLEFIN	
TEST		STANDARD	
PILLING		EN ISO 12945-2 : 2000 (5000 revs)	4
SEAM SLIPPAGE	WEFT	13936-2 : 2004	2,5 mm
	WARP		3,0 mm
ABRASSION		EN ISO 12945-2 : 1998	13.000
COLOR	RUBBING	BS EN 105-X12 : 2001	4-5
	DRY		4-5
	WET	7-8	
LIGHT		BS EN 105-B02 : 1994	7-8
OIL REPELLENCY		ISO EN 14419	3
SPRAY TEST		BS EN ISO 1920	4-5
FLAMMIBILITY		EN ISO 1021-1	Pass
ANTI BACTERIAL		LIS L 1902	Pass

COLOR RESISTANCE

FASTNESS TO	STANDARD	Varies according to the value written next to the product name			
		LOD	OD	OD+	OD++
LIGHT	BS EN ISO 105-B02	7	7	7/8	8
WEATHERING	BS EN ISO 105-B04	6	6/7	7	7/8
UV	ASTM G-154 (1200 Hours)	4	4	4/5	5
WASHING	BS EN ISO 105-C06 40 C	4/5			
SEA WATER	BS EN ISO 105-E02	4/5			
POOL WATER	BS EN ISO 105-E03	4/5			
RUBBING	BS EN ISO 105-X12	4/5			

CARE AND MAINTANCE INSTRUCTIONS

- 1- Remove any residual soil by lightly brushing or scraping the stain by sponging down with water
 - 2- If further cleaning needed, apply a solution with soap an water.
Work the solution into stain by lightly scrubbing the area with sponge or very soft bristle brush
 - 3- Remove cleaning solutions with a clean soft towel or sponge to remove the stain and excess cleaning solution.
(Repeat step 2 and 3 until stain is removed.)
 - 4- Rinse the affected are throughly remove cleaning solution from the fabric
- Vacuum the fabric prior to cleaning
- Do not be alarmed if stain is not removed after first application and removal of cleaning solution
- If the fabric can be removed from furniture it may be cleaned in a mild soap and warm water (40 C°) solution in washing machine and dried in an environment also less then 40 C°.
- Do not steam press or dry in electric or gas dryers. Allow fabric to be air dried naturally

REMARKS

Do not leave your product after 50 C° outside temperature under directly sunlight

Results can be vary region by region

The values for the products my have a varition of +/- %5

Art Picture is for indoor use only

NARIO

Nario has a range of 8 different colours that create a beautiful harmony when combined together in outdoor spaces.

Class A

NARIO



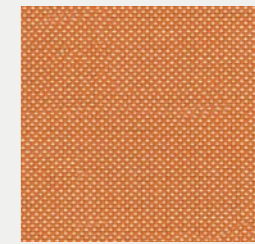
01



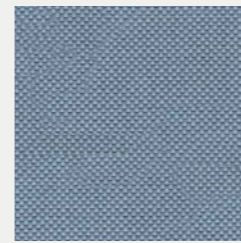
100



18



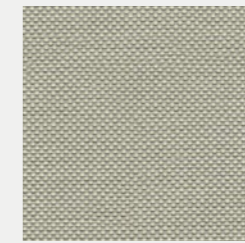
15



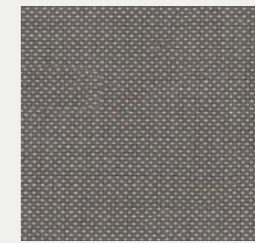
32



28



33



34



TECNICAL CHARACTERISTIC

QUALITY NAME		NARIO	
WIDTH		140 CM +/- 1 CM	
WEIGHT		263 GR/M²	
COMPOSITION		% 100 OLEFIN	
TEST		STANDARD	
PILLING		EN ISO 12945-2 : 2000 (5000 revs)	4-5
SEAM SLIPPAGE	WEFT	13936-2 : 2004	4,8 mm
	WARP		4,6 mm
ABRASSION		EN ISO 12945-2 : 1998	23.000
COLOR	RUBBING	BS EN 105-X12 : 2001	4-5
	WET		4-5
	LIGHT	BS EN 105-B02 : 1994	7-8
OIL REPELLENCY		ISO EN 14419	3
SPRAY TEST		BS EN ISO 1920	4-5
FLAMMIBILITY		EN ISO 1021-1	Pass
ANTI BACTERIAL		LIS L 1902	Pass

COLOR RESISTANCE

FASTNESS TO	STANDARD	Varies according to the value written next to the product name			
		LOD	OD	OD+	OD++
LIGHT	BS EN ISO 105-B02	7	7	7/8	8
WEATHERING	BS EN ISO 105-B04	6	6/7	7	7/8
UV	ASTM G-154 (1200 Hours)	4	4	4/5	5
WASHING	BS EN ISO 105-C06 40 C	4/5			
SEA WATER	BS EN ISO 105-E02	4/5			
POOL WATER	BS EN ISO 105-E03	4/5			
RUBBING	BS EN ISO 105-X12	4/5			

CARE AND MAINTANCE INSTRUCTIONS

- 1- Remove any residual soil by lightly brushing or scraping the stain by sponging down with water
 - 2- If further cleaning needed, apply a solution with soap an water.
Work the solution into stain by lightly scrubbing the area with sponge or very soft bristle brush
 - 3- Remove cleaning solutions with a clean soft towel or sponge to remove the stain and excess cleaning solution.
[Repeat step 2 and 3 until stain is removed.]
 - 4- Rinse the affected are throughly remove cleaning solution from the fabric
- Vacuum the fabric prior to cleaning
- Do not be alarmed if stain is not removed after first application and removal of cleaning solution
- If the fabric can be removed from furniture it may be cleaned in a mild soap and warm water (40 C°) solution in washing machine and dried in an environment also less then 40 C°.
- Do not steam press or dry in electric or gas dryers. Allow fabric to be air dried naturally

REMARKS

Do not leave your product after 50 C° outside temperature under directly sunlight

Results can be vary region by region

The values for the products my have a varition of +/- %5

Art Picture is for indoor use only

TELMA

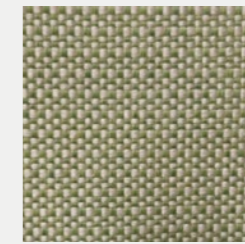
TELMA



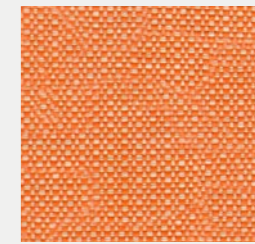
101



103



15



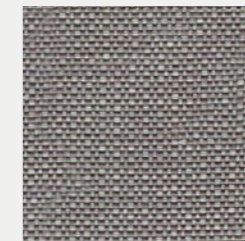
108



122



22



126



128

Telma has a range of 8 solid colours and reflects the beautiful effect of two-coloured linen weaving.

Class A



TECNICAL CHARACTERISTIC

QUALITY NAME		TELMA	
WIDTH		140 CM +/- 1 CM	
WEIGHT		343 GR/M²	
COMPOSITION		% 100 OLEFIN	
TEST		STANDARD	
PILLING		EN ISO 12945-2 : 2000 (5000 revs)	4-5
SEAM SLIPPAGE	WEFT	13936-2 : 2004	4,8 mm
	WARP		4,6 mm
ABRASSION		EN ISO 12945-2 : 1998	50.000
COLOR	RUBBING	DRY	BS EN 105-X12 : 2001
		WET	4-5
	LIGHT	BS EN 105-B02 : 1994	7-8
OIL REPELLENCY		ISO EN 14419	3
SPRAY TEST		BS EN ISO 1920	4-5
FLAMMIBILITY		EN ISO 1021-1	Pass
ANTI BACTERIAL		LIS L 1902	Pass

COLOR RESISTANCE

FASTNESS TO	STANDARD	Varies according to the value written next to the product name			
		LOD	OD	OD+	OD++
LIGHT	BS EN ISO 105-B02	7	7	7/8	8
WEATHERING	BS EN ISO 105-B04	6	6/7	7	7/8
UV	ASTM G-154 (1200 Hours)	4	4	4/5	5
WASHING	BS EN ISO 105-C06 40 C	4/5			
SEA WATER	BS EN ISO 105-E02	4/5			
POOL WATER	BS EN ISO 105-E03	4/5			
RUBBING	BS EN ISO 105-X12	4/5			

CARE AND MAINTANCE INSTRUCTIONS

- 1- Remove any residual soil by lightly brushing or scraping the stain by sponging down with water
 - 2- If further cleaning needed, apply a solution with soap an water.
Work the solution into stain by lightly scrubbing the area with sponge or very soft bristle brush
 - 3- Remove cleaning solutions with a clean soft towel or sponge to remove the stain and excess cleaning solution.
(Repeat step 2 and 3 until stain is removed.)
 - 4- Rinse the affected are throughly remove cleaning solution from the fabric
- Vacuum the fabric prior to cleaning
- Do not be alarmed if stain is not removed after first application and removal of cleaning solution
- If the fabric can be removed from furniture it may be cleaned in a mild soap and warm water (40 C°) solution in washing machine and dried in an environment also less then 40 C°.
- Do not steam press or dry in electric or gas dryers. Allow fabric to be air dried naturally

REMARKS

Do not leave your product after 50 C° outside temperature under directly sunlight

Results can be vary region by region

The values for the products my have a varition of +/- %5

Art Picture is for indoor use only

VERO

VERO



101



01



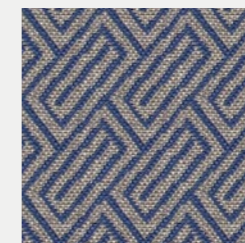
10



109



24



23



25

Vero comes in a range of 7 different colours and has a holistic design understanding together with modern patterns and glossy, elegant look.

Class A



TECNICAL CHARACTERISTIC

QUALITY NAME		VERO	
WIDTH		140 CM +/- 1 CM	
WEIGHT		318 GR/M²	
COMPOSITION		% 100 OLEFIN	
TEST		STANDARD	
PILLING		EN ISO 12945-2 : 2000 (5000 revs)	4
SEAM SLIPPAGE	WEFT	13936-2 : 2004	5,5 mm
	WARP		3,1 mm
ABRASSION		EN ISO 12945-2 : 1998	18.000
COLOR	RUBBING	BS EN 105-X12 : 2001	4-5
	DRY		4-5
	WET	7-8	
OIL REPELLENCY		ISO EN 14419	3
SPRAY TEST		BS EN ISO 1920	4-5
FLAMMIBILITY		EN ISO 1021-1	Pass
ANTI BACTERIAL		LIS L 1902	Pass

COLOR RESISTANCE

FASTNESS TO	STANDARD	Varies according to the value written next to the product name			
		LOD	OD	OD+	OD++
LIGHT	BS EN ISO 105-B02	7	7	7/8	8
WEATHERING	BS EN ISO 105-B04	6	6/7	7	7/8
UV	ASTM G-154 (1200 Hours)	4	4	4/5	5
WASHING	BS EN ISO 105-C06 40 C	4/5			
SEA WATER	BS EN ISO 105-E02	4/5			
POOL WATER	BS EN ISO 105-E03	4/5			
RUBBING	BS EN ISO 105-X12	4/5			

CARE AND MAINTANCE INSTRUCTIONS

- 1- Remove any residual soil by lightly brushing or scraping the stain by sponging down with water
 - 2- If further cleaning needed, apply a solution with soap an water.
Work the solution into stain by lightly scrubbing the area with sponge or very soft bristle brush
 - 3- Remove cleaning solutions with a clean soft towel or sponge to remove the stain and excess cleaning solution.
[Repeat step 2 and 3 until stain is removed.]
 - 4- Rinse the affected are throughly remove cleaning solution from the fabric
- Vacuum the fabric prior to cleaning
- Do not be alarmed if stain is not removed after first application and removal of cleaning solution
- If the fabric can be removed from furniture it may be cleaned in a mild soap and warm water (40 C°) solution in washing machine and dried in an environment also less then 40 C°.
- Do not steam press or dry in electric or gas dryers. Allow fabric to be air dried naturally

REMARKS

Do not leave your product after 50 C° outside temperature under directly sunlight

Results can be vary region by region

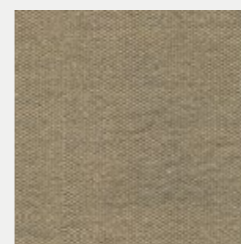
The values for the products my have a varition of +/- %5

Art Picture is for indoor use only

PLAIN MELANGE

Water-repellent fabric with anti-stain and anti-mould treatment, high colour fastness and resistance to sunlight exposure. Plain Melange is characterised by its design, fineness, and the soft touch. It can be used in- and outdoor.

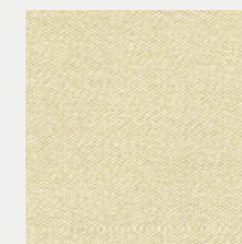
PLAIN MELANGE



016



018



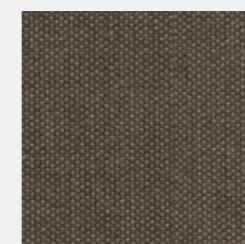
020



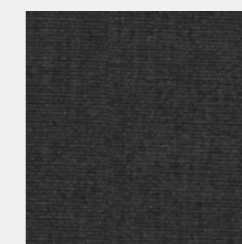
070



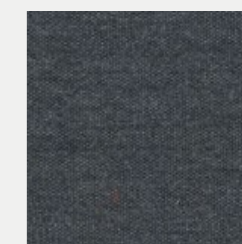
072



079



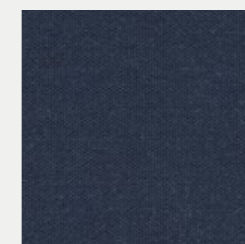
583



690



693



694



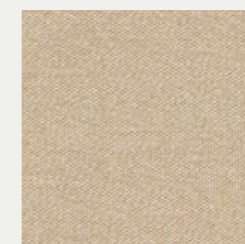
783



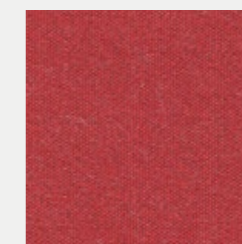
833



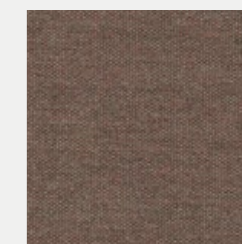
834



835



870



872



874



875



876



879



882

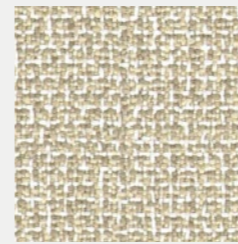


PRODUCT SPECIFICATIONS

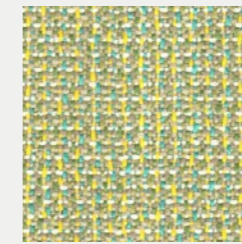
TIPOLOGY	100% solution dyed acrylic outdoor fabric.
CHARACTERISTICS	Water-repellent fabric with anti-stain and anti-mould treatment, high colour fastness and resistant to sunlight exposure. The fabric is characterised by its design and fineness, by the soft touch and can be used in- and outdoor.
APPLICATIONS	Indoor and outdoor furniture: upholstery, cushions, draperies sheers. Suitable also for marine upholstery.
WARRANTY	Irisun Living fabrics are guaranteed for 5 years concerning the UV resistance and the colour fastness. The warranty is valid in case of respect of the application of the fabric and of the instructions for care and cleaning.
FEATURES	Uv Rays Protection Shield
	Water Repellent Stain Resistant Mildew Resistant
	Breathable Fearless Fabric
	Bleach Cleanable Fade Resistant
WIDTH	137 cm
ROLL LENGTH	30 m
WEIGHT	240 gr/m ²
MARTINDALE	15000 cycles
OIL-REPELLENCY	5 off 8
SPRAY TEST	5 off 5
UV COLOUR FASTNESS	7 off 8
COLOUR FASTNESS TO WEATHER	7 off 8
COLOUR FASTNESS AFTER WASHING AT 40 C	5 off 5
FLAME RESISTANCE	CAL TB 117 - 2013 Section 1
FLAME RESISTANCE	Indoor and outdoor furniture: upholstery, cushions, draperies e sheers. Suitable also for marine upholstery.
TOLERANCE	±5%
BIOCIDES	It contains biocidal agent with approved active substances: Octyl Isothiazolinone

MATTEO

MATTEO



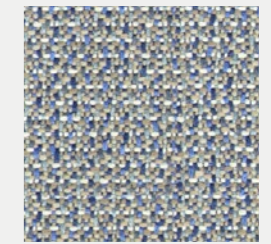
01



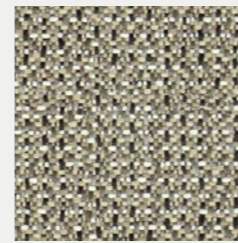
10



09



24



25

Matteo has a range of 5 living colours and creates an energetic contrast between sparkles of colours and backgrounds.

CLASS B



TECNICAL CHARACTERISTIC

QUALITY NAME		MATTEO
WIDTH		140 CM +/- 1 CM
WEIGHT		463 GR/M²
COMPOSITION		% 100 OLEFIN
TEST		STANDARD
PILLING		EN ISO 12945-2 : 2000 (5000 revs) 5
SEAM SLIPPAGE	WEFT	13936-2 : 2004 3,5 mm
	WARP	
ABRASSION		EN ISO 12945-2 : 1998 28.000
COLOR	RUBBING	BS EN 105-X12 : 2001 4-5
	DRY	
	WET	7-8
OIL REPELLENCY		ISO EN 14419 3
SPRAY TEST		BS EN ISO 1920 4-5
FLAMMIBILITY		EN ISO 1021-1 Pass
ANTI BACTERIAL		LIS L 1902 Pass

COLOR RESISTANCE

FASTNESS TO	STANDARD	Varies according to the value written next to the product name			
		LOD	OD	OD+	OD++
LIGHT	BS EN ISO 105-B02	7	7	7/8	8
WEATHERING	BS EN ISO 105-B04	6	6/7	7	7/8
UV	ASTM G-154 (1200 Hours)	4	4	4/5	5
WASHING	BS EN ISO 105-C06 40 C	4/5			
SEA WATER	BS EN ISO 105-E02	4/5			
POOL WATER	BS EN ISO 105-E03	4/5			
RUBBING	BS EN ISO 105-X12	4/5			

CARE AND MAINTANCE INSTRUCTIONS

- 1- Remove any residual soil by lightly brushing or scraping the stain by sponging down with water
 - 2- If further cleaning needed, apply a solution with soap an water.
Work the solution into stain by lightly scrubbing the area with sponge or very soft bristle brush
 - 3- Remove cleaning solutions with a clean soft towel or sponge to remove the stain and excess cleaning solution.
(Repeat step 2 and 3 until stain is removed.)
 - 4- Rinse the affected are throughly remove cleaning solution from the fabric
- Vacuum the fabric prior to cleaning
- Do not be alarmed if stain is not removed after first application and removal of cleaning solution
- If the fabric can be removed from furniture it may be cleaned in a mild soap and warm water (40 C°) solution in washing machine and dried in an environment also less then 40 C°.
- Do not steam press or dry in electric or gas dryers. Allow fabric to be air dried naturally

REMARKS

- Do not leave your product after 50 C° outside temperature under directly sunlight
- Results can be vary region by region
- The values for the products my have a varition of +/- %5
- Art Picture is for indoor use only

SUNBRELLA

SOLIDS & STRIPES

ODYSSEY

Solids is the standard classic fabric in our collection. It comes in a range of 50 colours with ottoman, piqué and chiné effects to create a bespoke look. Available in three iconic strips and highly resistant, Solids are adapted to any use.

CLASS C

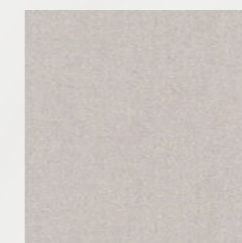
SOLIDS & STRIPES - ODYSSEY



SJA 5404 137
NATURAL



SJA 3966 137
MARBLE



SJA 3741 137
SILVER GREY



SJA 5453 137
CANVAS



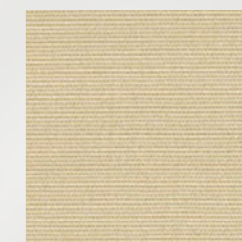
SJA 3780 137
LIN



SJA 3988 137
STONE



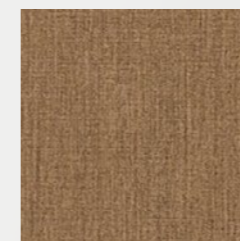
SJA 3706 137
SHINGLES



SJA 5422 137
ANTIQUE BEIGE



SJA 48009/00 137
ARMOR PEBBLE



SJA 5476 137
HEATHER BEIGE



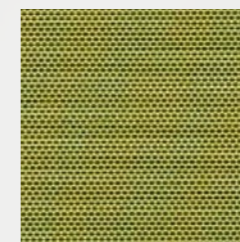
SJA 3907 137
TAUPE CHINÉ



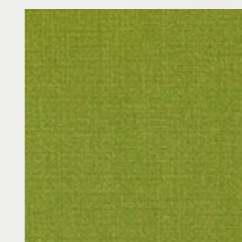
SJA 3729 137
TAUPE



SJA 3967 137
MINT



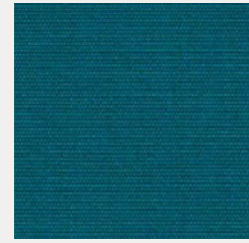
SJA 3970 137
LICHEN



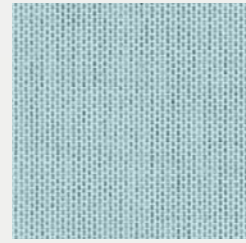
SJA 3738 137
MACAO



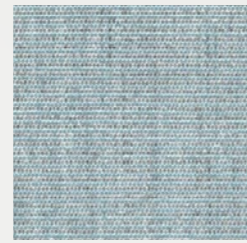
SJA 3987 137
ALPINE



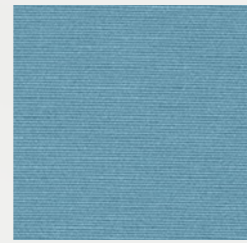
SJA 3944 137
CHARRON



SJA 3964 137
CURAÇAO



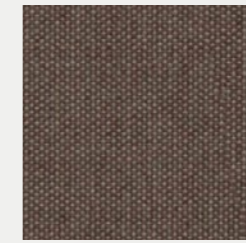
SJA 3793 137
MINERAL BLUE CHINÉ



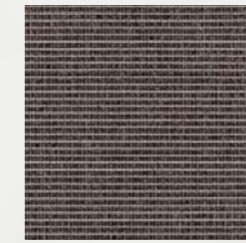
SJA 5420 137
MINERAL BLUE



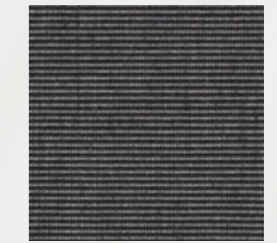
SJA 3737 137
ARDOISE



SJA 3127 137
MINK BROWN



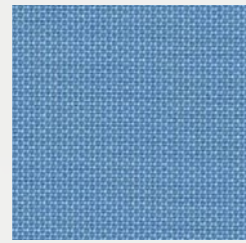
SJA 3792 137
DARK SMOKE



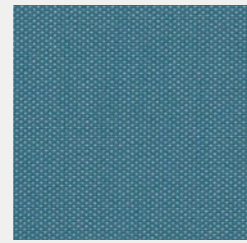
SJA 3705 137
CHARCOAL



SJA 5416 137
ARUBA



SJA 3990 137
MYOSOTIS



SJA 3941 137
ADRIATIC



SJA 3717 137
RIVIERA BLUE



SJA 3906 137
CARBON



SJA 3756 137
LEAD CHINÉ



SJA 3757 137
FLANELLE



SJA 3758 137
SOOTY



SJA 5499 137
TRUE BLUE



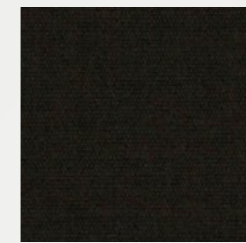
SJA 3942 137
BLUE STORM



SJA 3991 137
BLAZER



SJA 3984 137
CANARY



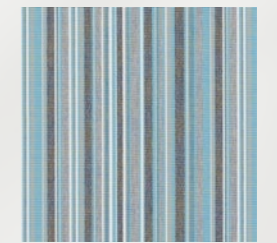
SJA 5408 137
BLACK



SJA 3778 137
QUADRI GREY



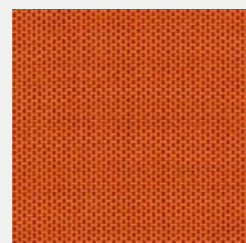
SJA 3777 137
PORTO GREY CHINÉ



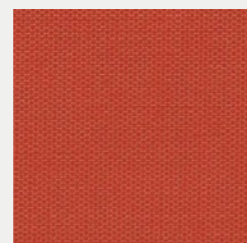
SJA 3776 137
PORTO BLUE CHINÉ



SJA 3938 137
MIMOSA



SJA 3969 137
PUMPKIN



SJA 3939 137
PAPRIKA



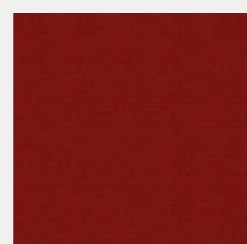
SJA 3965 137
BLUSH



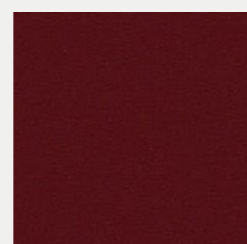
SJA 5477 137
LOGO RED



SJA 3968 137
PEPPER



SJA 3728 137
PARIS RED





SJA 5436 137
BURGUNDY



SOLIDS & STRIPES - ODYSSEY

PRODUCT SPECIFICATIONS

	STANDARDS NORMES	SOLIDS & STRIPES
INFO		100% Sunbrella Acrylic 54" / 137 cm width Selvedge is Left / Right
VARRANTY		We stand behind our fabrics with a guarantee that's best in the industry: a 5-year limited warranty for upholstery fabrics, specialty fabrics and decorative shade fabrics.
HOW TO CLEAN		For easy day-to-day maintenance of your Sunbrella fabric: 1-Brush off loose dirt before it becomes embedded 2-Wipe up spills as soon as they occur, and spot-clean fabric before stains set.
ZERO LANDFILL		 For over 30 years, Sunbrella® has recycled its industrial wastes such as yarn and packaging. Today, every Sunbrella® manufacturing facility around the globe sends absolutely no waste to the landfill.
COMPOSITION		100% Sunbrella® Acrylic
FINISH		Water-Repellent & Stain-Proof
MINIMUM USEFULL WIDTH	EN 1773	137
WEIGHT	ISO 3801 g/sqm - g/m²	260
ROLL LENGTH	LM - ML	50
SPRAY TEST	ISO 4920 Class/5	5
COLOUR FASTNESS UV INDOOR	ISO 105B02 Class/8	8
COLOUR FASTNESS TO WEATHER OUTDOOR	ISO 105B04 - 1000 H Class / 5	4-5
WASH COLOUR FASTNESS 30°C	ISO 105C06 Class/5	5
COLOUR FASTNESS DRY FRICTION	ISO 105X12 Class/5	5
COLOUR FASTNESS WET FRICTION	ISO 105X12 Class/5	5
CARE INSTRUCTIONS		 Ironing reinforces the treatment

Cleaning
Vacuum regularly. Wipe with a damp cloth using soap and water or use proprietary upholstery shampoo.
For deeper cleaning use bleach or alcohol.

CERTIFICATIONS



SUNBRELLA
NATTÉ
ODYSSEY

Timeless and versatile, Natté is a classic upholstery fabric. Natural to the eye and elegant to the touch, it is ideal for seats and accessories. Natté comes in a rich palette of colours, luxurious neutrals and new designs in invigorating, sophisticated hues.

NATTE - ODYSSEY



NAT 10020 140
WHITE



NAT 10014 140
NATURE



NAT 10021 140
CANVAS



NAT 10151 140
LINEN CHALK



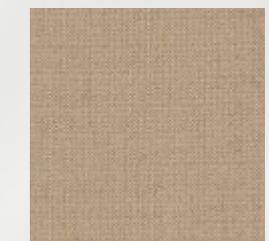
NAT 10152 140
GRAUMEL CHALK



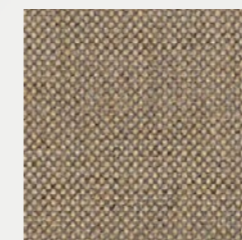
NAT 10155 140
TAUPE CHALK



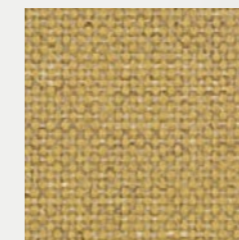
NAT 10150 140
HEATHER CHALK



NAT 10028 140
HEATHER BEIGE



NAT 10029 140
HEATHER GREY



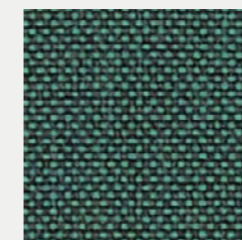
NAT 10235 140
AMBER



NAT 10234 140
FLAMINGO



NAT 10233 140
PISTACHIO



NAT 10232 140
IVY



NAT 10025 140
FROSTY CHINÉ



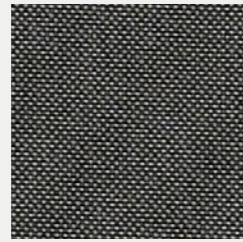
NAT 10064 140
CARBON SKY



NAT 10040 140
NATURE GREY



NAT 10065 140
CARBON BEIGE



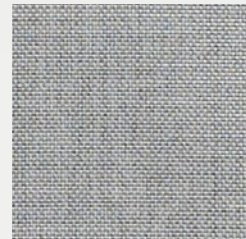
NAT 10059 140
DARK TAUPE



NAT 10231 140
CARMINE



NAT 10101 140
TONKA



NAT 10022 140
GREY CHINE



NAT 10063 140
CHARCOAL CHINÉ





NAT 10030 140
SOOTY



NATTE - ODYSSEY

PRODUCT SPECIFICATIONS

	STANDARDS NORMES	NATTE
INFO		100% Sunbrella Acrylic 55" / 140 cm width Selvedge is Left / Right
VARRANTY		We stand behind our fabrics with a guarantee that's best in the industry: a 5-year limited warranty for upholstery fabrics, specialty fabrics and decorative shade fabrics.
HOW TO CLEAN		For easy day-to-day maintenance of your Sunbrella fabric: 1-Brush off loose dirt before it becomes embedded 2-Wipe up spills as soon as they occur, and spot-clean fabric before stains set.
ZERO LANDFILL		 For over 30 years, Sunbrella® has recycled its industrial wastes such as yarn and packaging. Today, every Sunbrella® manufacturing facility around the globe sends absolutely no waste to the landfill.
COMPOSITION		100% Sunbrella® Acrylic
FINISH		Water-Repellent & Stain-Proof
MINIMUM USEFULL WIDTH	EN 1773	140
WEIGHT	ISO 3801 g/sqm - g/m²	275
ROLL LENGTH	LM - ML	50
SPRAY TEST	ISO 4920 Class/5	5
COLOUR FASTNESS UV INDOOR	ISO 105B02 Class/8	8
COLOUR FASTNESS TO WEATHER OUTDOOR	ISO 105B04 - 1000 H Class / 5	4-5
WASH COLOUR FASTNESS 30°C	ISO 105C06 Class/5	5
COLOUR FASTNESS DRY FRICTION	ISO 105X12 Class/5	5
COLOUR FASTNESS WET FRICTION	ISO 105X12 Class/5	5
CARE INSTRUCTIONS		 Ironing reinforces the treatment

Cleaning
Vacuum regularly. Wipe with a damp cloth using soap and water or use proprietary upholstery shampoo. For deeper cleaning use bleach or alcohol.

CERTIFICATIONS



SUNBRELLA

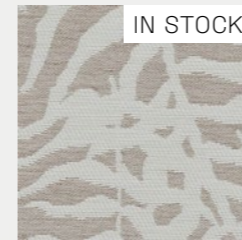
IKEBANA

BAHIA

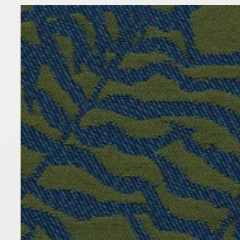
Like a shadow puppet, the design of the Ikebana fabric is displayed across its width, inviting us to enjoy the show. The bold colorful contrasts bring this plant-inspired jacquard to life and transports us to another land. Available in a range of six sparkling colours, Ikebana is ideal for drapes, seats and accessories.

CLASS E

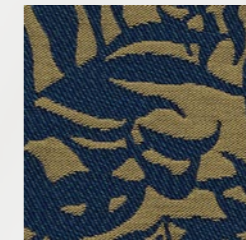
IKEBANA - BAHIA



IKE J369 140
UYUNI



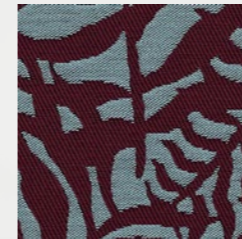
IKE J331 140
BAYOU



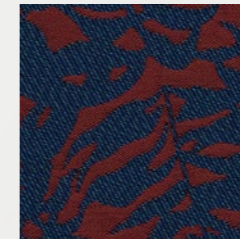
IKE J332 140
SAFARI



IKE J330 140
CANOPY






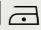



IKE J333 140
POLAR



IKE J334 140
CANYON

IKEBANA - BAHIA

PRODUCT SPECIFICATIONS

	STANDARDS NORMES	IKEBANA
INFO		55.1181" x 45.0787" 140.00 cm x 114.50 cm repeat 100% Sunbrella Acrylic 55" / 140 cm width Selvedge is Left / Right
VARRANTY		"We stand behind our fabrics with a guarantee that's best in the industry: a 5-year limited warranty for upholstery fabrics, specialty fabrics and decorative shade fabrics."
HOW TO CLEAN		"For easy day-to-day maintenance of your Sunbrella fabric: 1-Brush off loose dirt before it becomes embedded 2-Wipe up spills as soon as they occur, and spot-clean fabric before stains set."
ZERO LANDFILL		 For over 30 years, Sunbrella® has recycled its industrial wastes such as yarn and packaging. Today, every Sunbrella® manufacturing facility around the globe sends absolutely no waste to the landfill.
COMPOSITION		100% Sunbrella Acrylic
FINISH		Water-Repellent & Stain-Proof
MINIMUM USEFULL WIDTH	EN 1773	140
WEIGHT	ISO 3801 g/sqm - g/m²	525
ROLL LENGTH	LM - ML	25
SPRAY TEST	ISO 4920 Class/5	4
COLOUR FASTNESS UV INDOOR	ISO 105B02 Class/8	8
COLOUR FASTNESS TO WEATHER OUTDOOR	ISO 105B04 - 1000 H Class / 5	4-5
WASH COLOUR FASTNESS 30°C	ISO 105C06 Class/5	5
COLOUR FASTNESS DRY FRICTION	ISO 105X12 Class/5	5
COLOUR FASTNESS WET FRICTION	ISO 105X12 Class/5	5
CARE INSTRUCTIONS		      Ironing reinforces the treatment

Cleaning
Vacuum regularly. Wipe with a damp cloth using soap and water or use proprietary upholstery shampoo.
For deeper cleaning use bleach or alcohol.

CERTIFICATIONS



Upholstery Categories

CLASS	BRAND	NAME	TYPE
A	ALYA	LIVIO	FABRIC
	ALYA	MIRELLA	FABRIC
	ALYA	NARIO	FABRIC
	ALYA	TELMA	FABRIC
	ALYA	VERO	FABRIC
	IRUSUN	PLAIN MALANGE	FABRIC
B	ALYA	MATTEO	FABRIC
C	SUNBRELLA	SOLIDS & STRIPES	FABRIC
	SUNBRELLA	NATTE	FABRIC
E	SUNBRELLA	IKEBANA	FABRIC

Fabric Compatibility List

	LIVIO	MIRELLA	NARIO	TELMA	VERO	PLAIN MELANGE	MATTEO	SOLIDS & STRIPES	NATTE	IKEBANA
	A	A	A	A	A	A	B	C	C	E
REGO PLAY UPHOLSTERED	●	●	●	●	●	●	●	●	●	●
REST SEAT UPHOLSTERED	●	●	●	●	●	●	●	●	●	●
REST UPHOLSTERED	●	●	●	●	●	●	●	●	●	●
ROY	●	✘	●	●	●	●	●	◆	●	●
CLAP SEAT&BACK	●	●	●	●	●	●	●	●	●	●
CLAP FRAME	○	○	○	○	○	○	○	○	○	○
PLAT CUSHION	●	●	●	●	●	●	●	●	●	●
PLAT FRAME	○	○	○	○	○	○	○	○	○	○
PLAT SEAT&BACK	●	●	●	●	●	●	●	●	●	●
DOR CUSHION	●	●	●	●	●	●	●	●	●	●
DOR FRAME	○	○	○	○	○	○	○	○	○	○
DOR SEAT&BACK	●	●	●	●	●	●	●	●	●	●
SET CUSHION	●	●	●	●	●	●	●	●	●	●
SET FRAME	○	○	○	○	○	○	○	○	○	○
SET SEAT&BACK	●	●	●	●	●	●	●	●	●	●
SORBE	●	✘	●	●	●	●	●	◆	●	●

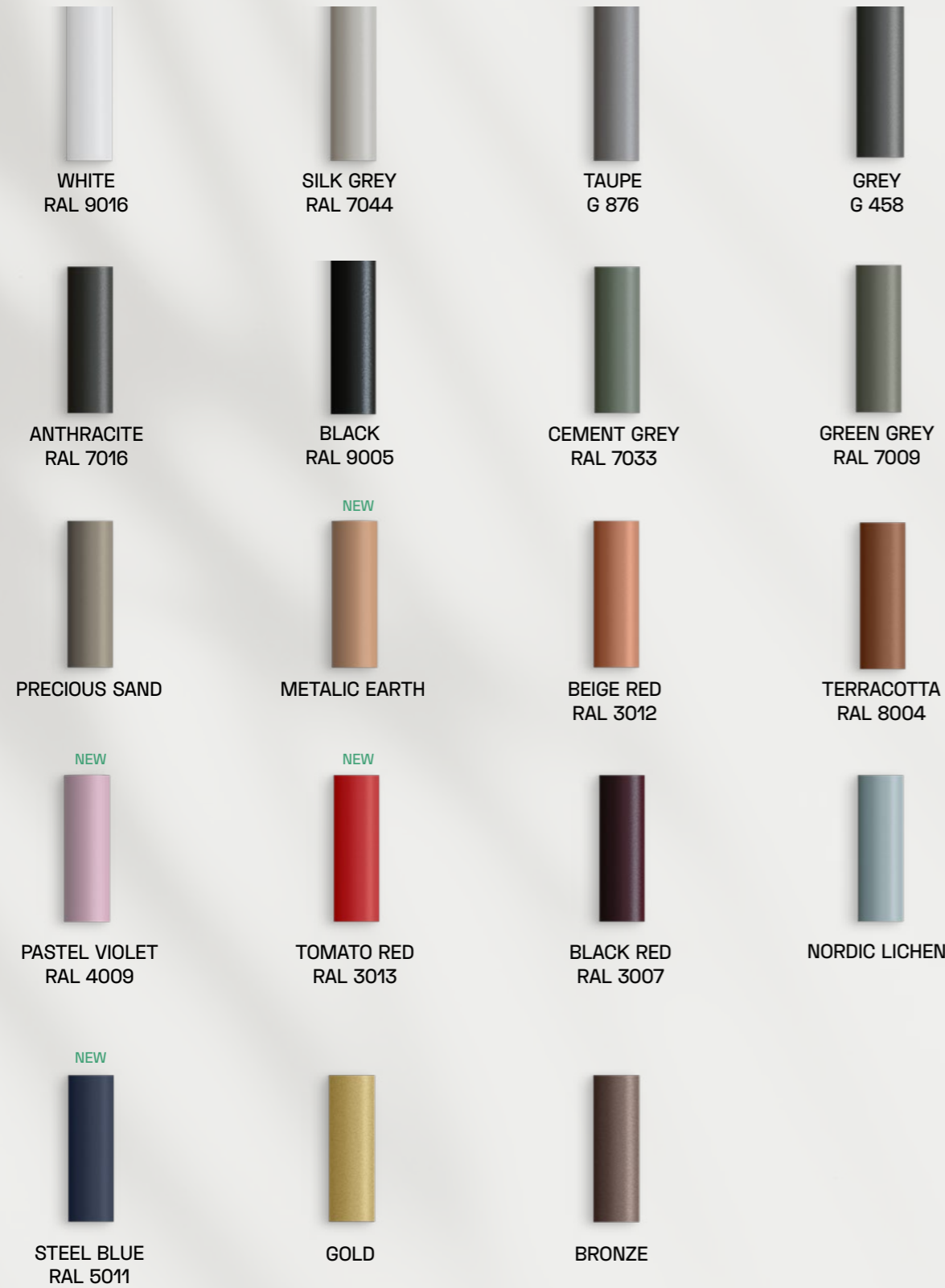
- Suitable
- ◆ Suitable [Excluding Striped Fabrics]
- ✘ Not Suitable
- Fabric Not Suitable / Mesh Suitable



MATERIALS & FINISHES

MATERIALS & FINISHES

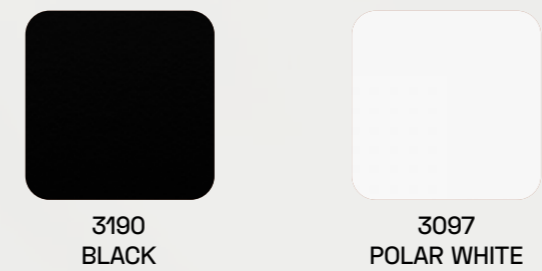
POWDER COATING COLORS



NATURAL STONE

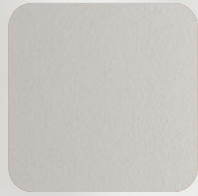


COMPACT LAMINATE



MATERIALS & FINISHES

POLYPROPYLENE



SILK GREY
RAL 7044



TAUPE
G 876



ANTHRACITE
RAL 7016



NORDIC LICHEN

WOOD



IROKO