

The background features a large, abstract geometric pattern in white and dark red. The pattern includes a large circle, a smaller circle, and several overlapping shapes that resemble stylized letters or symbols, such as a large 'C' and a 'Q'.

FABRICS &  
LEATHERS

# Blazer

Made from premium New Zealand lambswool, providing the highest quality raw material that is ideal for spinning, weaving and dyeing.

CLASS D



## CAMIRA - BLAZER



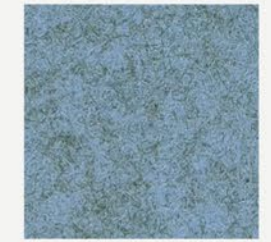
FAIRFIELD  
CUZ47



SILVERDALE  
CUZ28



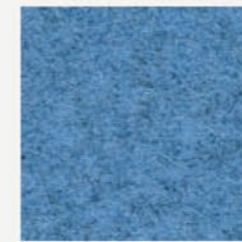
STONEBRIDGE  
CUZ4W



PLYMOUTH  
CUZ1R



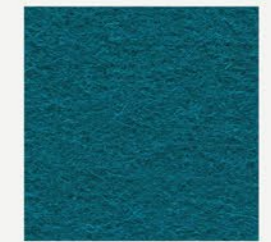
NORLAND  
CUZ4J



PERTH  
CUZ4H



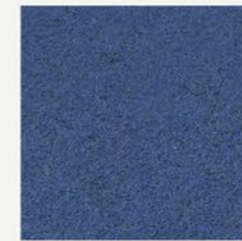
BROKENHURST  
CUZ4B



VASSAR  
CUZ2U



ASTON  
CUZ02



MANCHESTER  
CUZ1V



ELLESMERE  
CUZ3Z



KNIGHTSBRIDGE  
CUZ26



DUNDEE  
CUZ4P



TETTENHALL  
CUZ3X



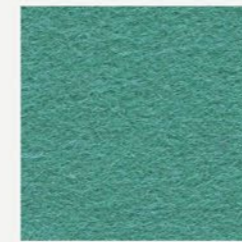
EDINBURGH  
CUZ1Y



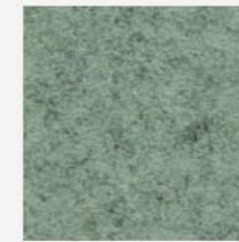
OXFORD  
CUZ09



ULLSWATER  
CUZ4S



WOODCROFT  
CUZ2Z



MORAY  
CUZ4K



LATYMER  
CUZ33



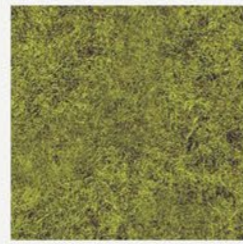
CAMIRA - BLAZER



DARTMOUTH  
CUZ2Q



DUNHURST  
CUZ58



ULSTER  
CUZ1F



CAMP HILL  
CUZ1K



KINGHAM  
CUZ3U



STOWE  
CUZ3R



BRYANSTON  
CUZ53



NEWPORT  
CUZ1L



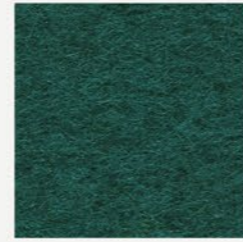
HEATHFIELD  
CUZ4V



OAKHAM  
CUZ3Y



MONTCREST  
CUZ3A



ABERTAY  
CUZ3B



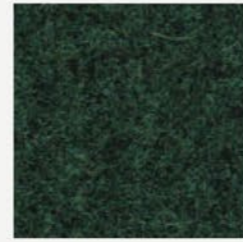
AMBLESIDE  
CUZ4G



BODMIN  
CUZ4F



CARDIFF  
CUZ1N



GRANTHAM  
CUZ4E



PADWORTH  
CUZ3N



ST ANDREWS  
CUZ86

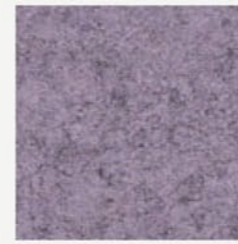


TREVELYAN  
CUZ31



SURREY  
CUZ1E

CAMIRA - BLAZER



FALMOUTH  
CUZ4M



MOORLANDS  
CUZ4T



CHICHESTER  
CUZ4C



HOLYOKE  
CUZ2T



BRISTOL  
CUZ4X



CATERHAM  
CUZ4A



WESLEY  
CUZ82



DUNALK  
CUZ4D



DERBY  
CUZ4Q



EARLSCLIFFE  
CUZ3T



ACKWORTH  
CUZ3P



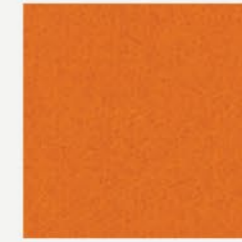
WARWICK  
CUZ4L



MALVERN  
CUZ3L



EYNESBURY  
CUZ2W



LEEDS  
CUZ4R



FELSTED  
CUZ3S



UPLANDS  
CUZ4U



LEICESTER  
CUZ4N



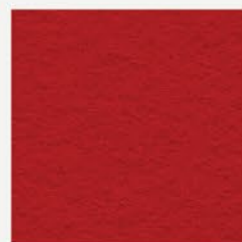
TONBRIDGE  
CUZ3Q



GOLDSMITH  
CUZ39



## CAMIRA - BLAZER



ORIEL  
CUZ18



WELLINGTON  
CUZ13



HANDCROSS  
CUZ63



MAGDALENE  
CUZ21



EDGE HILL  
CUZ90



MORETON  
CUZ3W



SIDCOT  
CUZ3V



ABERLOUR  
CUZ1J



NEWCASTLE  
CUZ1W



HULL  
CUZ1P



WINCHESTER  
CUZ12



SILCOATES  
CUZ30



BROMSGROVE  
CUZ35



GLENALMOND  
CUZ62



KINGSMEAD  
CUZ67



NAPIER  
CUZ08



LUCTON  
CUZ3M

## CAMIRA - BLAZER

### PRODUCT SPECIFICATIONS

Application	Task Seating / Soft Seating / Curtains
Composition	100% Virgin Wool. Non metallic dyestuffs
Environmental	Certified to Indoor Advantage™ "Gold" Rapidly renewable and compostable
Width	140 cm minimum
Weight	460 g/m2 ±5%
Abrasion Resistance	Heavy duty / 10 year guarantee. Independently certified to ≥50,000 Martindale cycles
Flammability	EN 1021 - 1&2 (cigarette & match), BS 7176 Low Hazard, NF D 60-013, ÖNORM B 3825 & A 3800-1 (58kg/m3 CMHR Foam), UNI 9175 Classe 1 IM, BS 476 Part 7 Class 1 (Adhered) EN 13501-1 Adhered Class D, s1, d0, BS 5852 Ignition Source 5 when FR treated BS 7176 Medium Hazard when FR treated, BS 476 Part 6 Class 0 when FR treated (Adhered) EN 13501-1 Adhered Class B, s1, d0 when FR treated, EN 13501-1 Un-adhered Class D, s2, d0 when FR treated, BS 5867-2 Type B Curtains & Drapes when FR treated, The Furniture and Furnishing (Fire) (Safety), Regulations 1988 (Domestic Cigarette and Match), IMO FTP Code (Part 8)
Light Fastness	5 (ISO 105 - B02)
Fastness to Rubbing	Wet: 4, Dry: 4 (ISO 105 - X12)
Guarantee	10 Years

#### Cleaning

Vacuum regularly. Wipe with a damp cloth using soap and water or use proprietary upholstery shampoo. For deeper cleaning use steam or professionally dry clean.



# Oceanic

Oceanic is a fabric born of the Seaqual Initiative designed to combat marine plastic pollution and achieve a waste free environment.

CLASS D

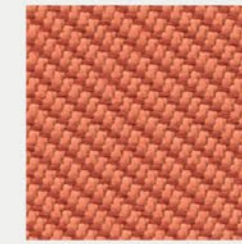
## CAMIRA - OCEANIC



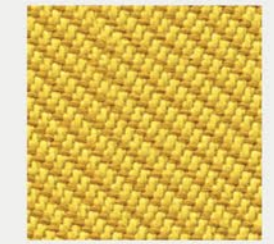
ABYSS  
OOC10



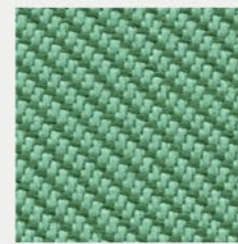
AQUATIC  
OOC12



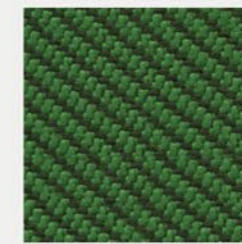
CORAL  
OOC05



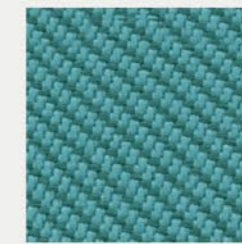
BARRIER  
OOC07



SEA  
OOC04



COAST  
OOC03



JETSAM  
OOC02



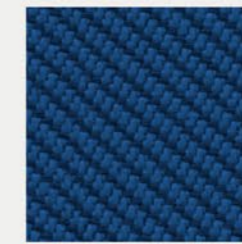
PADDLE  
OOC13



GULF  
OOC15



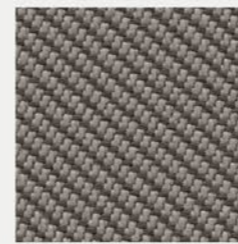
NEPTUNE  
OOC11



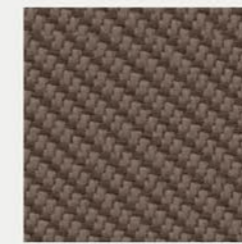
ATOLL  
OOC06



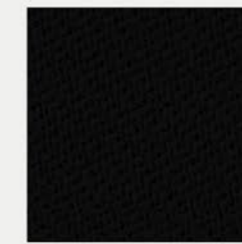
RIPTIDE  
OOC14



BAY  
OOC08



SHORE  
OOC09

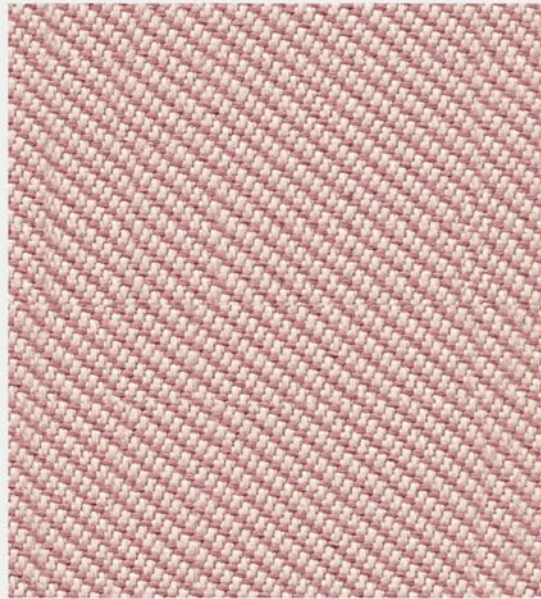


FLOTSAM  
OOC01



# FABRIC & LEATHER

## CAMIRA - OCEANIC



SEAFARER  
OOC16

## CAMIRA - OCEANIC

### PRODUCT SPECIFICATIONS

Application	Task Seating / Soft Seating
Composition	100% post-consumer recycled polyester, including 50% SEAQUAL yarn
Environmental	Certified to the EU Ecolabel Certified to OEKO-TEX® Standard 100 Certified to Indoor Advantage™ Gold Made from 100% post-consumer recycled polyester Non metallic dyestuffs
Width	140 cm minimum
Weight	497 g/m2 ±5% (696g/lin.m ±5%)
Abrasion Resistance	Heavy duty / 10 year guarantee. Independently certified to ≥100,000 Martindale cycles
Flammability	EN 1021 - 1&2 (cigarette & match) BS 7176 Low Hazard <b>Optional: Please specify when ordering</b> BS 5852 Ignition Source 5 with EnviroFlam5 BS 7176 Medium Hazard with EnviroFlam5 <b>Note:</b> Flammability performance is dependent on components used. Our certificates show what substrates have been used in our tests. For composite tests customers must ensure their complete furniture meets the necessary standards.
Light Fastness	5 (ISO 105 - B02), OOC16: 4/5 (ISO 105 - B02)
Fastness to Rubbing	Wet: 4, Dry: 4 (ISO 105 - X12)
Bleach Cleanable	ISO 105 E03 colour change 4 for dilution factor 1:4 chlorine solution.
Cleaning	Vacuum regularly. Wipe with a damp cloth using proprietary upholstery shampoo/soap. For deeper cleaning use steam, bleach, alcohol or professionally dry clean. Can be washed at 60°C.
Guarantee	10 Years

Task Seating

Soft Seating

Cigarette & Match

Environmental

Bleach Cleanable

Washable

10  
Year  
Guarantee

With Treatment  
Medium Hazard

CERTIFIED  
INDOOR AIR QUALITY  
FURNITURE

EU  
Ecolabel  
www.ecolabel.eu

OEKO  
TEX®  
STANDARD  
100  
11-62664  
Shirley  
www.oeko-tex.com



# Regent

A beautifully modern approach to velvet, Regent effortlessly combines glamour with practicality.

CLASS D

## CAMIRA - REGENT



NOVELLA  
REG09



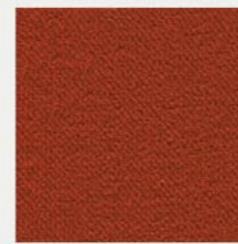
SAVOY  
REG10



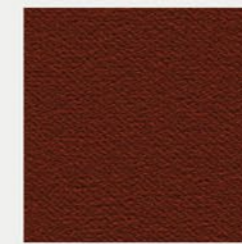
GRAND  
REG07



ALHAMBRA  
REG01



WINTER GARDENS  
REG02



MINACK  
REG08



ADELPHI  
REG04



DRURY LANE  
REG05



CARNEGIE  
REG03



OPERA  
REG14



BLOOMSBURY  
REG15



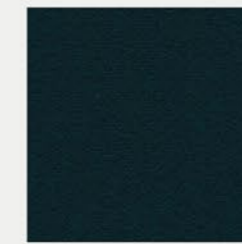
LYCEUM  
REG16



ORCHESTRA  
REG18



RECITAL  
REG19



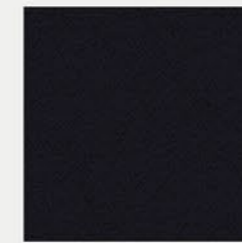
BROADHURST  
REG22



MAJESTIC  
REG20



BELFREY  
REG24



BELASCO  
REG25



WYNDHAMS  
REG11



CLARIDGES  
REG12



# FABRIC & LEATHER

## CAMIRA - REGENT



AMBASSADOR  
REG26



BELGRADE  
REG28



CONSERVATOIRE  
REG29



MARQUIS  
REG23

## CAMIRA - REGENT

### PRODUCT SPECIFICATIONS

Application	Task Seating / Soft Seating / Curtains
Composition	100% Flame Retardant Polyester
Width	140 cm minimum
Weight	400 g/m <sup>2</sup> ±5% (560g/lin.m ±5%)
Abrasion Resistance	Heavy duty / 5 year guarantee Independently certified to ≥50,000 Martindale cycles
Flammability	EN 1021 - 1&2 (cigarette & match) BS 7176 Low Hazard BS 5852 Ignition Source 5 DIN 4102 B1 NF D 60-013 UNI 9175 Classe 1 IM NF P 92-507 M1 BS 7176 Medium Hazard BS 5867 : Part 2 : Type B Curtain & Drapes <b>Note:</b> Flammability performance is dependent on components used. Our certificates show what substrates have been used in our tests. For composite tests customers must ensure their complete furniture meets the necessary standards.
Light Fastness	5 (ISO 105 - B02)
Fastness to Rubbing	Wet: 4, Dry: 4 (ISO 105 - X12)
Bleach Cleanable	ISO 105 E03 colour change 4 for dilution factor 1:4 chlorine solution.
Cleaning	Vacuum regularly. Wipe with a damp cloth using soap and water or use proprietary upholstery shampoo. For deeper cleaning use steam, bleach, alcohol or professionally dry clean.
Guarantee	5 Years



Task Seating



Soft Seating



Cigarette  
& Match



Medium Hazard  
M1 / B1



Bleach  
Cleanable



5  
Year  
Guarantee

# Main Line Flax

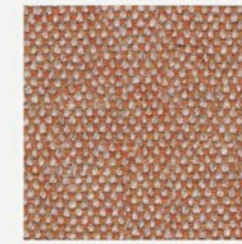
A new inherently flame retardant fabric from sustainable sources with strong, long and smooth fibres.

CLASS C

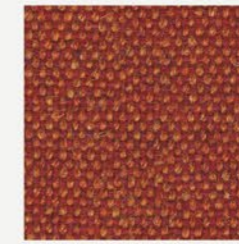
## CAMIRA - MAIN LINE FLAX



ALPERTON  
MLF43



LAMBETH  
MLF08



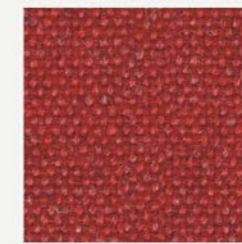
LEYTON  
MLF13



BALHAM  
MLF44



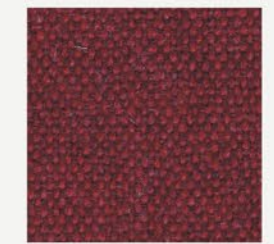
BARKING  
MLF45



ALDGATE  
MLF01



KILBURN  
MLF06



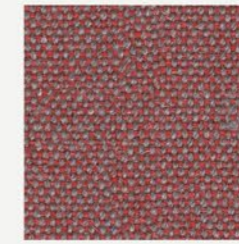
PARSONS  
MLF14



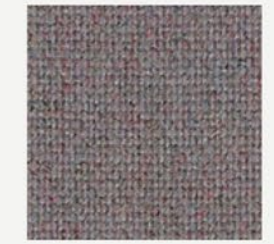
BLACKWALL  
MLF46



NORTHFIELDS  
MLF40



BARBICAN  
MLF03



BRIXTON  
MLF47



CHIGWELL  
MLF48



EMBANKMENT  
MLF50



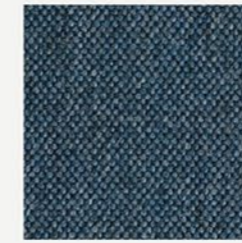
TOWER  
MLF36



WATERLOO  
MLF21



EPPING  
MLF51



CLAPHAM  
MLF49



BROMPTON  
MLF35



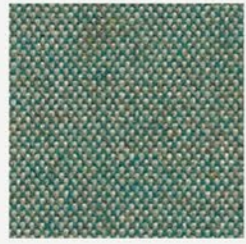
VICTORIA  
MLF19



## CAMIRA - MAIN LINE FLAX



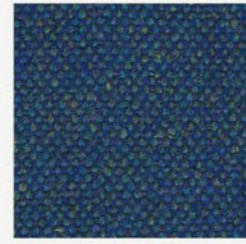
WESTMINSTER  
MLF22



BAYSWATER  
MLF24



STANMORE  
MLF37



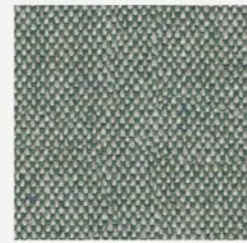
PIMLICO  
MLF34



HOLBORN  
MLF05



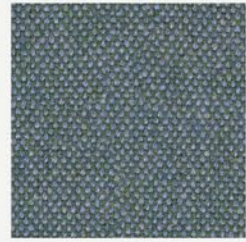
NEWBURY  
MLF10



MONUMENT  
MLF09



GREENWICH  
MLF52



BETHNAL  
MLF25



HARROW  
MLF54



HORNCHURCH  
MLF55



HAMPSTEAD  
MLF53



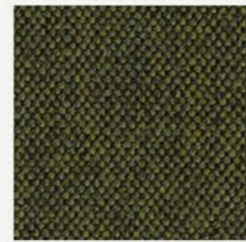
GREENFORD  
MLF32



TUFNELL  
MLF18



FARRINGDON  
MLF29



KENTISH  
MLF56



MOORGATE  
MLF57



WOODFORD  
MLF67



GOLDHAWK  
MLF31



TOOTING  
MLF17

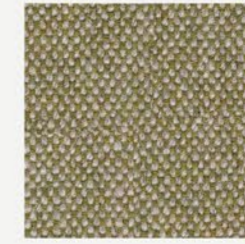
## CAMIRA - MAIN LINE FLAX



PERIVALE  
MLF59



STOCKWELL  
MLF15



KENSINGTON  
MLF07



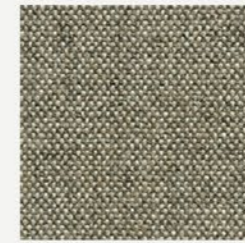
MORDEN  
MLF12



PINNER  
MLF60



BANK  
MLF23



ARCHWAY  
MLF02



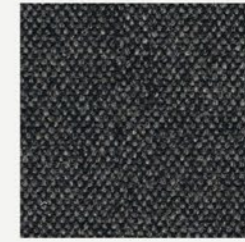
REDBRIDGE  
MLF61



CAMDEN  
MLF26



RICHMOND  
MLF62



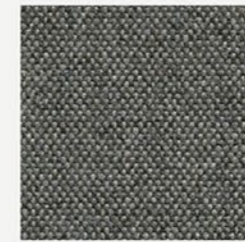
TEMPLE  
MLF16



SHADWELL  
MLF63



STRATFORD  
MLF64



WATFORD  
MLF65



WHITECHAPEL  
MLF66



EDWARE  
MLF28



## CAMIRA - MAIN LINE FLAX



UPMINSTER  
MLF20



Colors may slightly vary due to photographic lighting sources or your monitor settings.

## CAMIRA - MAIN LINE FLAX

### PRODUCT SPECIFICATIONS

Application	Task Seating / Soft Seating / Curtains
Composition	75% Virgin Wool, 25% Flax
Environmental	Certified to the EU Ecolabel Certified to Indoor Advantage™ "Gold" Rapidly renewable and compostable. Made from wool and bast fibre.
Width	140 cm minimum
Weight	437 g/m2 ±5%
Abrasion Resistance	Heavy duty / 10 year guarantee. Independently certified to ≥50,000 Martindale cycles
Flammability	EN 1021 - 1&2 (cigarette & match), BS 7176 Low Hazard, BS 5852 Ignition Source 5 BS 7176 Medium Hazard, NF D 60-013, ÖNORM B 3825 & A 3800-1 (58kg/m3 CMHR Foam) UNI 9175 Classe 1 IM, BS 5867-2: Type B Curtains & Drapes, IMO FTP Code (Part 8) The Furniture and Furnishing (Fire) (Safety) Regulations 1988 (Domestic Cigarette and Match)
Light Fastness	5 (ISO 105 - B02)
Fastness to Rubbing	Wet: 3, Dry: 4 (ISO 105 - X12)
Guarantee	10 Years

#### Cleaning

Vacuum regularly. Wipe with a damp cloth using soap and water or use proprietary upholstery shampoo.  
For deeper cleaning use steam or professionally dry clean.

Colors may slightly vary due to photographic lighting sources or your monitor settings.



# Vita

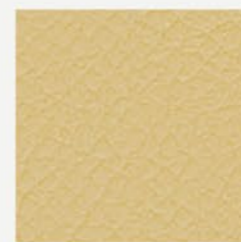
ARTIFICIAL LEATHER

High-quality artificial leather with a subtle surface grain effect and full matt appearance.

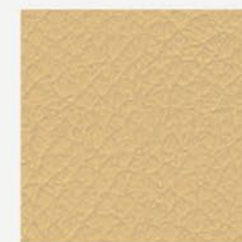
CLASS C

B&T

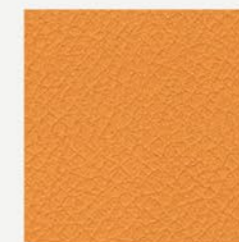
## CAMIRA - VITA



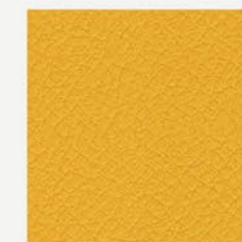
CORNSILK  
ITA37



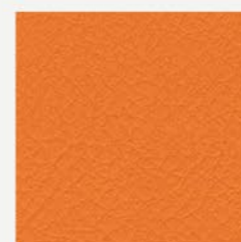
DAISY  
ITA43



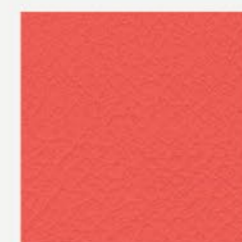
YELLOW  
ITA03



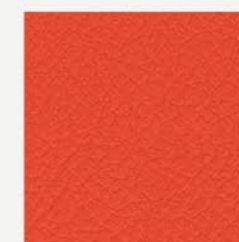
LEMON  
ITA33



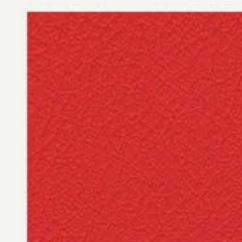
CARROT  
ITA41



PUNCH  
ITA35



SQUASH  
ITA05



AMPLIFIED  
ITA52



TOMATO  
ITA08



RUST  
ITA11



HOLLYHOCK  
ITA51



FLAMINGO  
ITA34



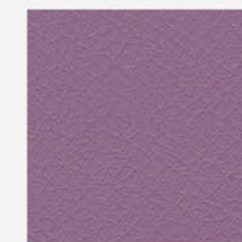
PINK  
ITA20



SIN  
ITA50



PLUM  
ITA23



WISTERIA  
ITA49



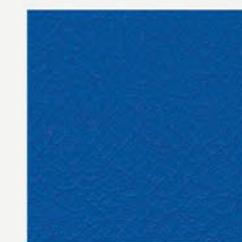
AMETHYST  
ITA17



ENVY  
ITA55



ROCKER  
ITA53



CLASH  
ITA56



CAMIRA - VITA



BUBBLES  
ITA36



PORCELAIN  
ITA15



SAIL  
ITA54



MARINA  
ITA21



NAVY  
ITA22



SURF  
ITA48



BREEZE  
ITA32



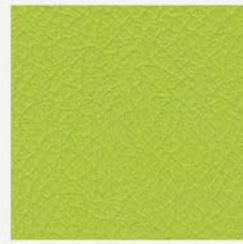
WATERFALL  
ITA18



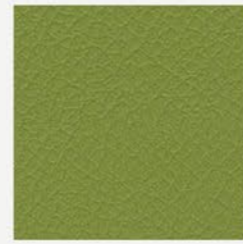
SAPPHIRE  
ITA16



PEACOCK  
ITA19



SPRING  
ITA40



AVOCADO  
ITA06



OLIVE  
ITA09



YUCCA  
ITA30



SEAL  
ITA01



SEAWEED  
ITA31



BONE  
ITA38



SWAN  
ITA42



PIGEON  
ITA45



KOALA  
ITA04

CAMIRA - VITA



HIPPO  
ITA07



CHIFFON  
ITA44



OATMEAL  
ITA02



ALPACA  
ITA46



GOLDEN  
ITA39



TAUPE  
ITA10



ESPRESSO  
ITA14



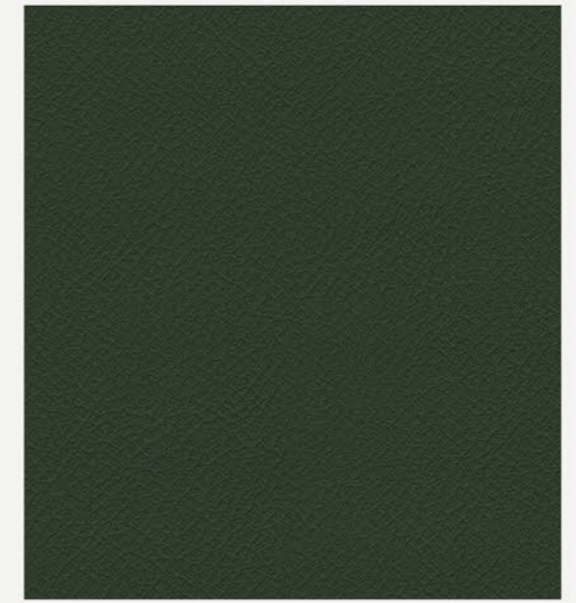
AMERICANO  
ITA13



BEETLE  
ITA47



NOIR  
ITA12



WREATH  
ITA29



CAMIRA - VITA



CAMIRA - VITA

PRODUCT SPECIFICATIONS

Application	Task Seating / Soft Seating
Composition	Surface: 98% PVC, 2%. PU Substrate: 100% Cotton
Width	140 cm minimum
Weight	850 g/m2 ±5%
Abrasion Resistance	Heavy duty / 5 year guarantee ISO 5470-2 100,000 rubs (Grade 2 minimum)
Flammability	EN 1021 - 1&2 (cigarette & match), BS 7176 Low Hazard, BS 5852 Ignition Souce 5 BS 7176 Medium Hazard, BS 5852 Ignition Source 7 (with interliner), UNI 9175 Classe 1 IM The Furniture and Furnishing (Fire) (Safety) Regulations 1988 (Domestic Cigarette and Match) IMO FTP Code (Part 8)
Flexes	ISO 7854 Method B 400,000 Flexing cycles / 5 year guarantee (full details available)
Light Fastness	6 (ISO 105 - B02)
Fastness to Rubbing	Wet: 4, Dry: 4 (ISO 105 - X12)
Bleach cleanable	ISO 105 E03 colour change 4 for dilution factor 1:4 chlorine solution.
Waterproof	Hydrostatic head BS 3424 Part 26 > 1 metre
Urea resistance	BS 3424 Part 19 no significant deterioration after 24 hrs
Anti-microbial	AATCC 147
Guarantee	5 Years

**Cleaning**  
Vacuum regularly. Wipe with a damp cloth using soap and water or use proprietary upholstery shampoo.  
For deeper cleaning use bleach or alcohol.



# Fox

A selection that takes its elegance from calm and simple colours and makes a difference with its texture.

CLASS C

## FIDIVI - FOX



9622



9107



9113



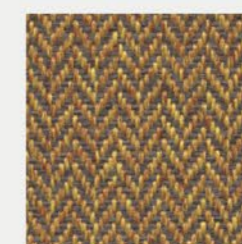
9202



9108



9114



9302



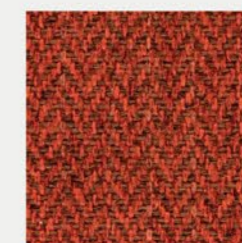
9203



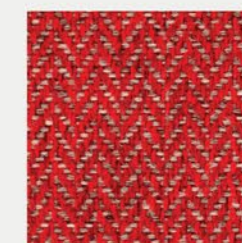
9322



9407



9312



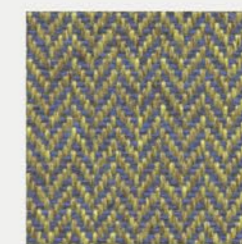
9412



9402



9217



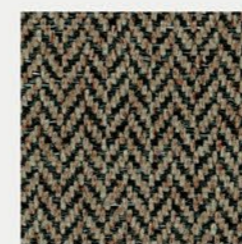
9706



9702



9705



9212



9106

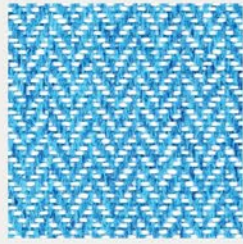


9616



# FABRIC & LEATHER

## FIDIVI - FOX



9601



9604



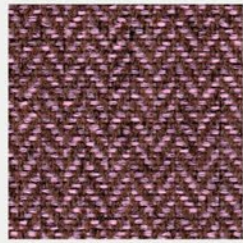
9602



9612



9215



9205



9501



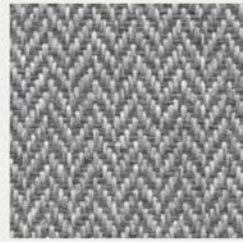
9504



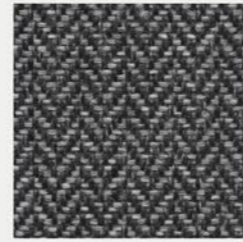
9109



9632



9805



9803



9804



9703

Colors may slightly vary due to photographic lighting sources or your monitor settings.

## FIDIVI - FOX

### PRODUCT SPECIFICATIONS

Description	Yarn dyed 2 color melange fabric. Wool handtouch, fishbone design, in 22 colorways	
Application	Office, Contract	
Weight	525 ± 5 % g/ml 350 ± 5 % g/m <sup>2</sup>	
Height	150 ± 2 % cm	
Composition	100% Polyester Trade Mark Trevira CS	
Abrasion Resistance	ISO 12947/2 120.000 ± 10 % Rubs	
Light Fastness	ISO 105-B02 6 (blue scale) Tolerance: from 5 to 8	
Fastness to Rubbing	ISO 105-X12 4/5 (grey scale) Tolerance: from 4 to 5	
Pilling (2000 rubs)	ISO 12945-2 5 Tolerance: from 4 to 5	
Acoustic Performances	ISO 9053 (Air flow)	
Fire Resistance	UNI 9174 Class 1 can meet UNI 9175 Class 1 IM can meet DIN 4102 Class B1 NF P 92 501-7 Class M1 NF D 60013 Class AM18 can meet EN 1021-1 & 2 BS 5852 Crib 5 BS 7176 Medium Hazard EN 13773 Class 1 can meet OENORM 3800-1 Class B1,Q1,TR1 can meet California TB 117:2013 can meet USA NFPA 701 can meet USA NFPA 260 can meet IMO Part 8 Upholstery	Will also pass other flammability standards. Flame retardant performance is dependent upon the foam used.
Certifications	Oekotex Euflower - Ecolabel	
Warranty	5 Years	
Cleaning and Washing		



Colors may slightly vary due to photographic lighting sources or your monitor settings.



# Laser J

The intense fabric experience comes with its attentive design.

CLASS C

## FIDIVI - LASER J



0001



1049



1014



1003



8006



2048



2036



3009



3004



3081



3094



3082



3012



4017



4079



4073



4024



4021



4011



6083

325

Colors may slightly vary due to photographic lighting sources or your monitor settings.



# FABRIC & LEATHER

## FIDIVI - LASER J



6020



6071



6098



5096



5003



7025



7021



8015



7014



8027



8078



8017



8033



6075

Colors may slightly vary due to photographic lighting sources or your monitor settings.

## FIDIVI - LASER J

### PRODUCT SPECIFICATIONS

Description	Fabric in 34 united colors	
Application	Office, Contract	
Weight	735 ± 5 % g/ml 525 ± 5 % g/m <sup>2</sup>	
Height	140 ± 2 % cm	
Composition	100% Polyester Trevira CS	
Abrasion Resistance	ISO 12947/2 150.000 ± 10 % Rubs	
Light Fastness	ISO 105-B02 6 (blue scale) Tolerance: from 5 to 8	
Fastness to Rubbing	ISO 105-X12 4/5 (grey scale) Tolerance: from 4 to 5	
Pilling (2000 rubs)	ISO 12945-2 5 Tolerance: from 4 to 5	
Acoustic Performances	ISO 9053 (Air flow) ISO 354 (Reverberation Room), 0,8	
Fire Resistance	UNI 9174 Class C1 UNI 9175 Class 1 IM DIN 4102 Class B1 NF P 92 501-7 M1 NF D 60013 Class AM18 EN 1021-1 & 2 BS 5852 Crib 5 BS 7176 Class Medium Hazard EN 13773 Class 1 can meet OENORM 3800-1 Class B1,Q1,TR1 can meet California TB 117:2013 USA NFPA 701 can meet USA NFPA 260 can meet IMO Part 8 Upholstery	Will also pass other flammability standards. Flame retardant performance is dependent upon the foam used.
Stain Repellent Treatment	Trademark Trevira B1 certificate MOQ 250m	
Certifications	Oekotex Euflower - Ecolabel	
Warranty	5 Years	
Cleaning and Washing		



Colors may slightly vary due to photographic lighting sources or your monitor settings.



# Silvertex

A serene and dynamic touch meets with high quality artificial leather thanks to its broad spectrum.

CLASS C



## SPRADLING - SILVERTEX



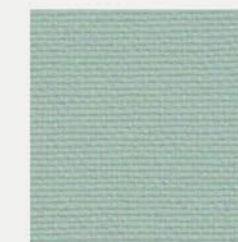
CAMEL  
122-2105



ULTRA VIOLET  
122-2104



SKYLIGHT  
122-2103



CORAL  
122-2102



ALUMINIUM  
122-2101



TEAL  
122-2100



LOTUS  
122-2099



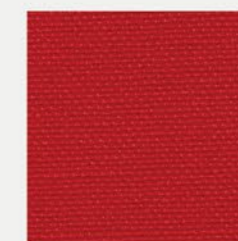
ROSÉ  
122-2098



ORCHID  
122-2097



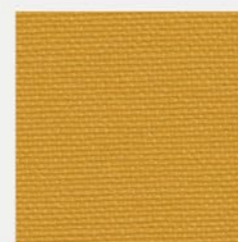
TOMATO  
122-2096



GRENADINE  
122-2095



PETROL  
122-2094



SQUASH  
122-2093



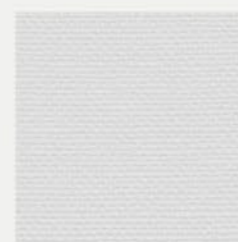
AVOCADO  
122-2092



CITRUS  
122-2091



ICE CREAM  
122-2090



WHITE  
122-2089



TURQUOISE  
122-3001



BALTIC  
122-3066



DELFT  
122-3067



SPRADLING - SILVERTEX



JET  
122-3068



SAPPHIRE  
122-3007



FOREST  
122-5063



BOTTLE  
122-5010



BASIL  
122-5020



PISTACHO  
122-5008



CELERY  
122-5019



SAGE  
122-5009



AUBERGINE  
122-7001



RASPBERRY  
122-2016



RUBIN  
122-6004



WINE  
122-2064



UMBER  
122-1014



MAGENTA  
122-7002



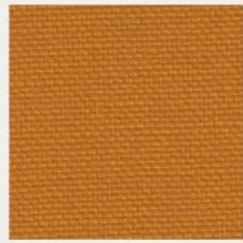
RED  
122-2011



SUNKIST  
122-2012



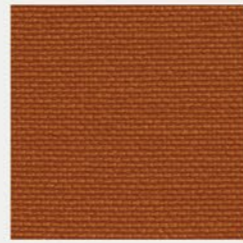
MANDARIN  
122-6061



SAFRAN  
122-6065



MELON  
122-6062



ORANGE  
122-0013

SPRADLING - SILVERTEX



LUGGAGE  
122-0073



ICE  
122-4004



CREAM  
122-1077



SISAL  
122-1051



CHAMPAGNE  
122-1078



BEIGE  
122-1010



MACADAMIA  
122-0001



SANDSTONE  
122-0002



TAUPE  
122-0009



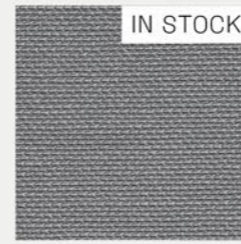
SHIITAKE  
122-4012



METEOR  
122-4024



MOCCA  
122-0005



PLATA  
122-4001



STERLING  
122-4011



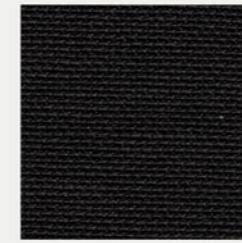
TITANIUM  
122-4010



STORM  
122-4002



GRAPHITE  
122-4003



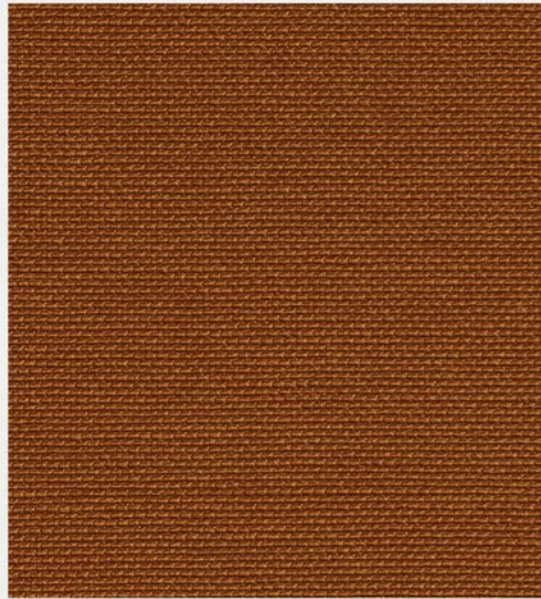
CARBON  
122-9002



BLACK  
122-9001



## SPRADLING - SILVERTEX



COBRE  
122-2003

## SPRADLING - SILVERTEX

### PRODUCT SPECIFICATIONS

<b>Composition:</b>	Topcoat :Vinyl   Backing; 100% Polyester Hi-Loft2™
<b>Weight:</b>	685 gr/m2
<b>Width:</b>	min. 137 cm
<b>Roll size:</b>	+/- 30m
<b>Abrasion:</b>	>300.000 cycles [MARTINDALE]
<b>Flame retardancy*:</b>	EN 1021 Part 1 & 2   DIN 4102 B2   MED   ECE R 1 18.02 Anx. 6,7 & 8 IMO 2010 FTP Part 8   UNI 9175 Classe I.IM   UNE 23.727-90 IR/M.2 NF P 92-503 / M2   EN 71-2:2006+ A1:2007   FMVSS 302
<b>Cold Crack:</b>	-29°C
<b>UV-Resistance:</b>	ISO 105 B02: ≥ 7/8 (BlueWool Scale)   ISO 104 B04: ≥ 4/5 (Grey Scale)
*This term and any corresponding data refer to the typical performance in the specific tests indicated and should not be construed to imply the behavior of this or any other material under actual fire conditions.	
<b>FINISHES AND TREATMENTS PERMABLOK3®</b>	
<b>Virucidal Activity</b>	ISO 18184:2019: Coated Fabrics treated with PERMABLOK3® are proven to reduce the presence of Coronavirus** by more than 90% within one hour of contact. ISO 21702:2019: All the Coated fabrics treated with PERMABLOK3® are capable of reducing the Coronavirus** activity by 99,9% within 24 hours of exposure on the surface. ISO 22196:2011. Value of antibacterial*** activity R>2.
<b>Bacteriostatic Properties:</b>	** Testing was conducted with material exposed to Feline Coronavirus (same coronaviridae family, structures and mechanisms similar to SARS-Cov2) ** Testing was conducted with material exposed to Staphylococcus aureus, Staphylococcus aureus (MRSA), Escherichia coli and Klebsiella pneumoniae.
<b>WARRANTY</b>	5 Years. Terms and conditions apply, Warranty conditions are displayed on our website.
<b>CARE AND CLEANING</b>	• The vinyl should be cleaned periodically in order to maintain its appearance and prevent build-up of dirt and contaminants. • Any stain, spills, or soiling should be cleaned up promptly to prevent the possibility of permanent staining. • Vinyl fabrics treated with PERMABLOK3® require a minimum of maintenance to retain their good looks. Use soft soapy solutions or special cleaning products for vinyl fabrics to remove stains on the surface of the material. Remove only with a damp white cloth. • Lacquers, strong cleaners, detergents, xylene-based solutions, acetone, or MEK cause immediate damage and contribute to the deterioration of the material. The use of such cleaners is at the owner's risk.

Certain clothing and accessory dyes (such as those used on denim jeans) may migrate to lighter colors. This phenomenon is increased by humidity and temperature and is irreversible. SPRADLING International GmbH, SPRADLING UK Ltd, and EURO SPRADLING S.L.U will not assume responsibility for dye transfer caused by external contaminants and possible permanent staining caused by this phenomenon.

PERMABLOK3® and SILVERTEX® are registered trademarks of Spradling Holdings, Inc.® | Hi-Loft2™ is trademark of Spradling Holdings, Inc.®



# Aspect

A subtle mélange,  
textured fabric  
with a warm soft  
handle, balancing  
superior flammability  
performance and  
a natural aesthetic.

CLASS B



## CAMIRA - ASPECT



SAHARA  
ACT13



YOSEMITE  
ACT14



ATACAMA  
ACT01



AMALFI  
ACT02



METEORA  
ACT08



GORKHA  
ACT12



ZION  
ACT09



MARRAKECH  
ACT03



PETRA  
ACT07



HALONG  
ACT05



CAPPADOCIA  
ACT04



CALABRIA  
ACT06



MATTERHORN  
ACT19



MOLOKAI  
ACT26



EVEREST  
ACT27



RAINER  
ACT24



COMO  
ACT22



LUCERNE  
ACT23



PENYGHEAT  
ACT20



JASPER  
ACT21



## CAMIRA - ASPECT



CAPONES  
ACT10



SERENGETI  
ACT16



PATAGONIA  
ACT18



CATBELLS  
ACT17



PALENQUE  
ACT11



BAMBURGH  
ACT15



DOLOMITES  
ACT28



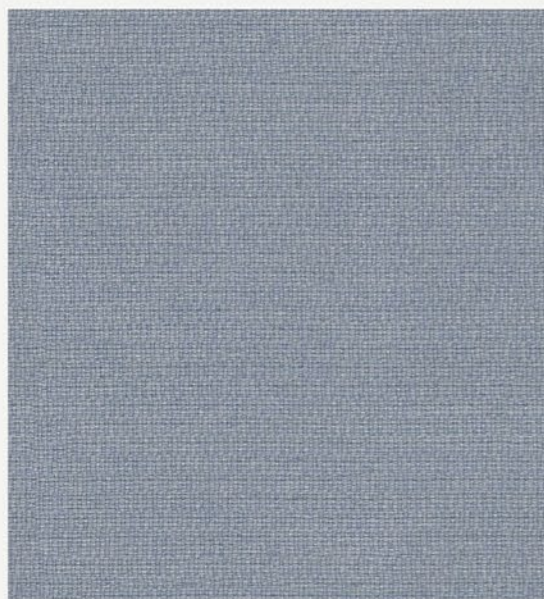
MALHAM  
ACT29



GALAPAGOS  
ACT30



AURORA  
ACT31



OTAGO  
ACT25



## PRODUCT SPECIFICATIONS

Application	Task Seating / Soft Seating
Composition	75% Trevira® CS Flame Retardant Polyester, 25% Polyester. Non metallic dyestuffs.
Environmental	Certified to OEKO-TEX® Standard 100 Certified to Indoor Advantage™ "Gold"
Width	140 cm minimum
Weight	320 g/m2 ±5%
Abrasion Resistance	Heavy duty / 10 year guarantee. Independently certified to ≥50,000 Martindale cycles
Flammability	EN 1021 - 1&2 (cigarette & match), BS 7176 Low Hazard, BS 5852 Ignition source 5 (over CMHR 50kg/m3 foam), BS 7176 Medium Hazard (over CMHR 50kg/m3 foam), DIN 4102 B1, NF D 60-013 (Over 50kg/m3 CMHR foam), ÖNORM B 3825 & A 3800-1 (over CMHR 58kg/m3 foam), UNI 9175 Classe 1 IM
Light Fastness	5 (ISO 105 - B02)
Fastness to Rubbing	Wet: 4, Dry: 4 (ISO 105 - X12)
Bleach cleanable	ISO 105 E03 colour change 4 for dilution factor 1:4 chlorine solution.
Guarantee	10 Years

**Cleaning**  
Vacuum regularly. Wipe with a damp cloth using soap and water or use proprietary upholstery shampoo. For deeper cleaning use steam, bleach, alcohol or professionally dry clean. Can be washed at 60°C.



# Quest

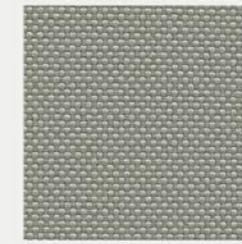
Woven entirely from post-consumer recycled plastic, this lightly textured, multi-application textile brings a touch of the ocean's natural beauty to commercial interiors.

CLASS B

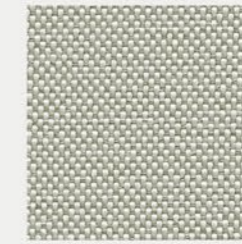
## CAMIRA - QUEST



DEPTH  
QUE01



FOSSIL  
QUE02



BARNACLE  
QUE03



MUSSEL  
QUE04



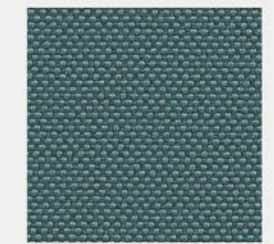
QUARTZ  
QUE05



SHELL  
QUE06



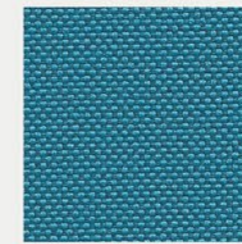
WHELK  
QUE08



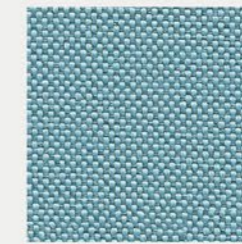
LIMPET  
QUE09



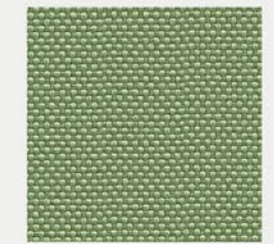
ROCK POOL  
QUE10



WAVE  
QUE11



TIDE  
QUE12



SEA GRASS  
QUE13



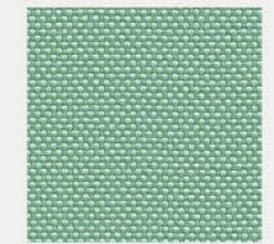
ALGAE  
QUE14



KELP  
QUE15



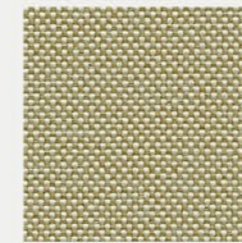
SEA FOAM  
QUE16



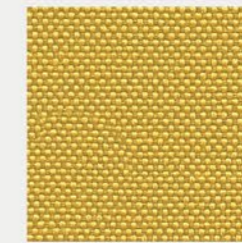
URCHIN  
QUE17



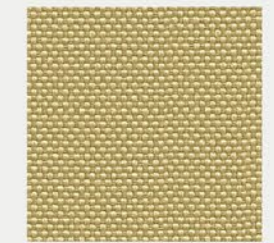
ABALONE  
QUE18



DRIFTWOOD  
QUE19



SANDSTONE  
QUE20



BEACH COMBER  
QUE21

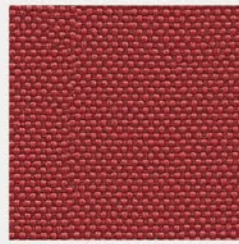


# FABRIC & LEATHER

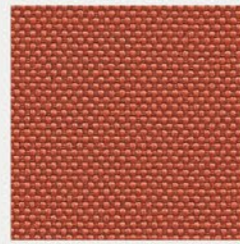
## CAMIRA - QUEST



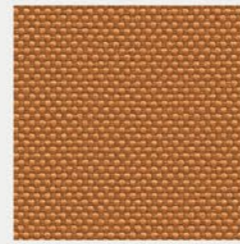
SALT  
QUE22



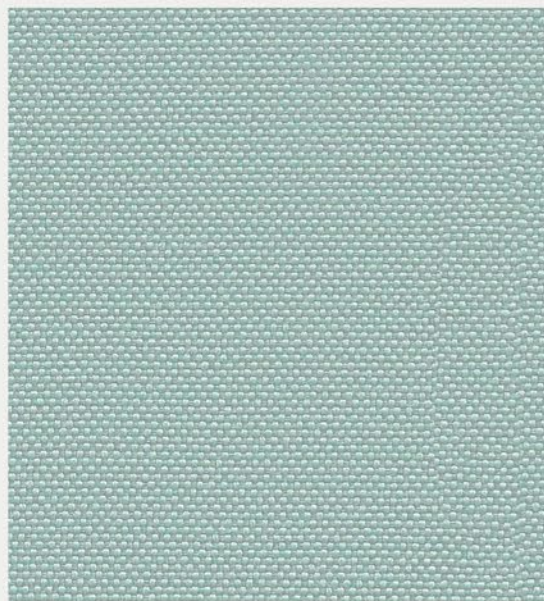
COCKLE  
QUE23



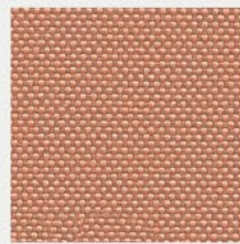
CRAB  
QUE24



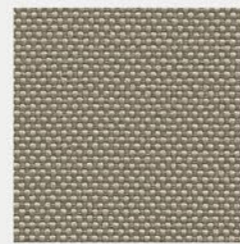
CLAY  
QUE25



RIPPLE  
QUE07



SHRIMP  
QUE26

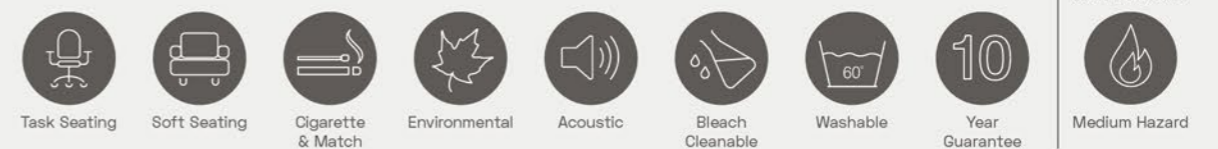


PEBBLE  
QUE27

## CAMIRA - QUEST

### PRODUCT SPECIFICATIONS

Application	Task Seating / Soft Seating / Panel
Composition	100% post-consumer recycled polyester including 75% SEAQUAL® YARN
Environmental	Certified to the EU Ecolabel Certified to OEKO-TEX® Standard 100 Certified to Indoor Advantage™ Gold Made from 100% post-consumer recycled polyester Non metallic dyestuffs
Width	137 cm minimum
Weight	330 g/m2 ±5% (452g/lin.m ±5%)
Abrasion Resistance	Heavy duty / 10 year guarantee. Independently certified to ≥100,000 Martindale cycles
Flammability	EN 1021 - 1 (cigarette) EN 1021 - 2 (match) BS 7176 Low Hazard UNI 9175 Classe 1 IM BS 476 Part 7 Class 1Y (Adhered) EN 13501-1 Adhered Class B, s1, d0 EN 13501-1 Un-adhered Class B, s1, d0 <b>Optional: Please specify when ordering</b> BS 5852 Ignition Source 5 with EnviroFlam5 BS 7176 Medium Hazard with EnviroFlam5 IMO FTP Code (Part 8) with EnviroFlam5 <b>Note:</b> Flammability performance is dependent on components used. Our certificates show what substrates have been used in our tests. For composite tests customers must ensure their complete furniture meets the necessary standards.
Light Fastness	4-6 (ISO 105 - B02)
Fastness to Rubbing	Wet: 4, Dry: 4 (ISO 105 - X12)
Bleach Cleanable	ISO 105 E03 colour change 4 for dilution factor 1:4 chlorine solution
Acoustic	Acoustically transparent. Acoustic graphs available upon request
Cleaning	Vacuum regularly. Wipe with a damp cloth using a proprietary upholstery shampoo/ soap. For deeper cleaning use steam, bleach, alcohol or professionally dry clean. Can be washed at 60°C.
Guarantee	10 Years



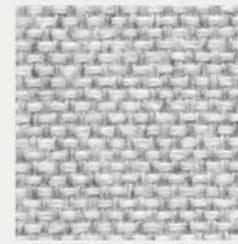


# Milano

Combining the feeling of ease and peace with its carefully selected colours.

CLASS B

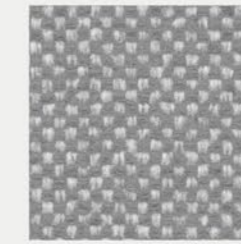
## FIDIVI - MILANO



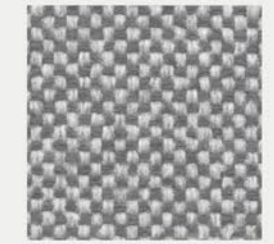
9000



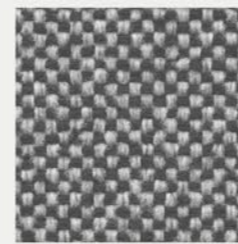
9801



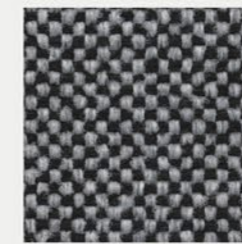
9878



9809



9817



9833



9101



9108



9106



9224



9212



9210



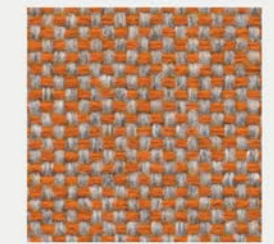
9390



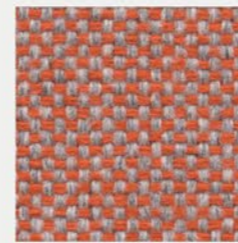
9319



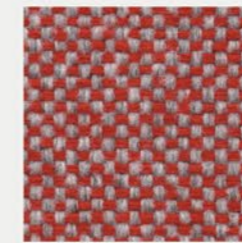
9330



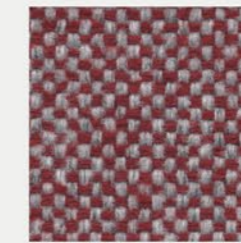
9430



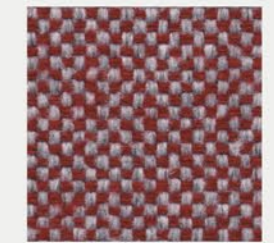
9451



9427



9494

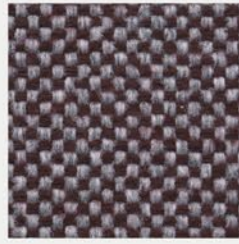


9418



# FABRIC & LEATHER

## FIDIVI - MILANO



9407



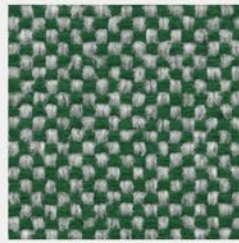
9734



9709



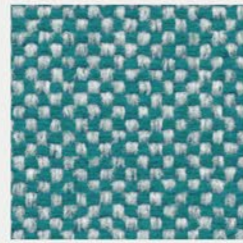
9725



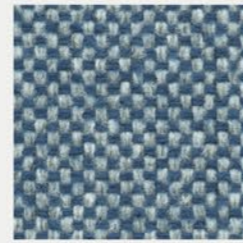
9702



9607



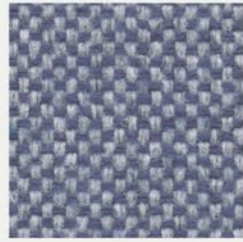
9691



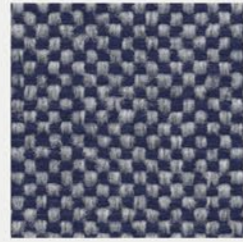
9614



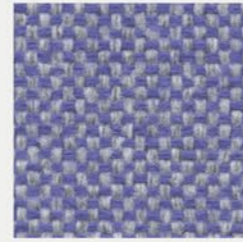
9656



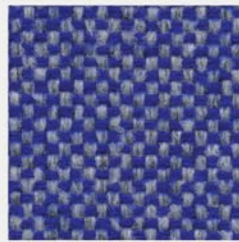
9613



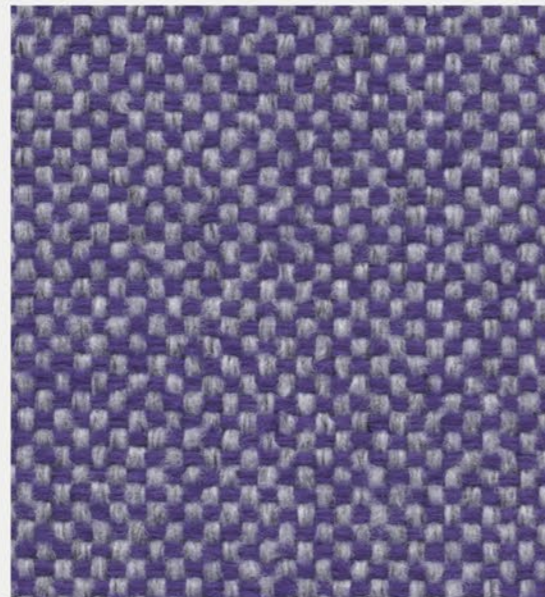
9698



9629



9695



9506

Colors may slightly vary due to photographic lighting sources or your monitor settings.

## FIDIVI - MILANO

### PRODUCT SPECIFICATIONS

Description	Full wool-like appearance and handtouch. 34 yarn dyed combinations	
Application	Office, Luggage, Contract	
Weight	525 ± 5 % g/ml 375 ± 5 % g/m <sup>2</sup>	
Height	140 ± 2 % cm	
Composition	100% Polyester Trevira CS	
Abrasion Resistance	ISO 12947/2 80.000 ± 10 % Rubs	
Light Fastness	ISO 105-B02 6 (blue scale) Tolerance: from 5 to 8	
Fastness to Rubbing	ISO 105-X12 4/5 (grey scale) Tolerance: from 4 to 5	
Pilling (2000 rubs)	ISO 12945-2 5 Tolerance: from 4 to 5	
Acoustic Performances	ISO 354 (Reverberation Room), 0,65	
Fire Resistance	UNI 9174 Class C1 can meet UNI 9175 Class 1 IM can meet DIN 4102 Class B1 NF P 92 501-7 M1 NF D 60013 Class AM18 can meet EN 1021-1 & 2 BS 5852 Crib 5 BS 7176 Class Medium Hazard EN 13773 Class 1 can meet OENORM 3800-1 Class B1,Q1,TR1 can meet California TB 117:2013 can meet USA NFPA 701 can meet USA NFPA 260 can meet IMO Part 8 Upholstery	Will also pass other flammability standards. Flame retardant performance is dependent upon the foam used.
Stain Repellent Treatment	Trademark Trevira B1 certificate MOQ 250m	
Certifications	Oekotex Euflower - Ecolabel	
Warranty	5 Years	
Cleaning and Washing		



Colors may slightly vary due to photographic lighting sources or your monitor settings.

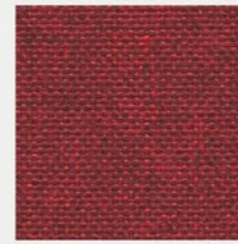


# Roccia

The world's favorite thanks to its perfect harmony of elegance and diversity.

CLASS B

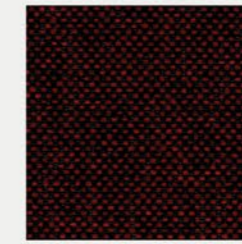
## FIDIVI - ROCCIA



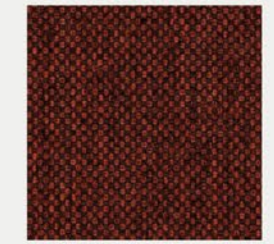
4504



4011



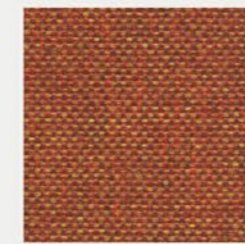
8514



4512



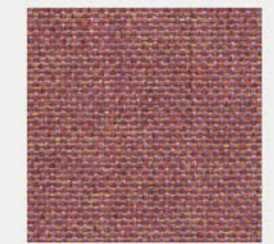
3012



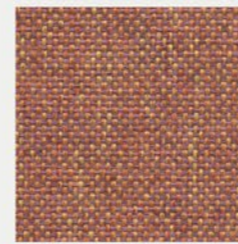
4501



5005



5505



5504



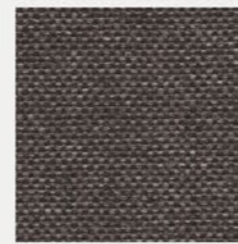
3506



3502



2502



2501



1504



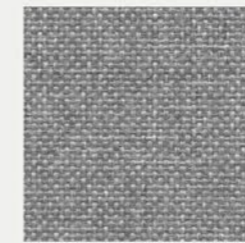
1503



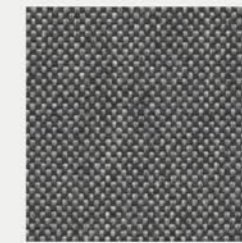
1502



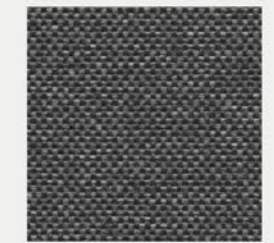
1511



8501



8502

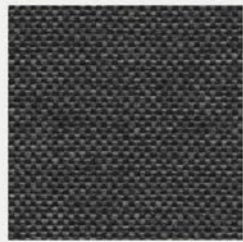


8030



# FABRIC & LEATHER

## FIDIVI - ROCCIA



8504



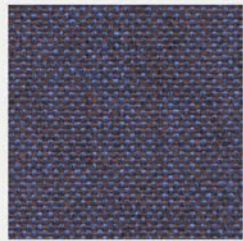
5512



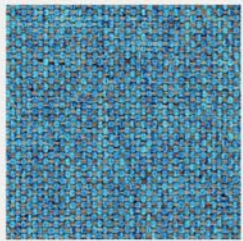
8515



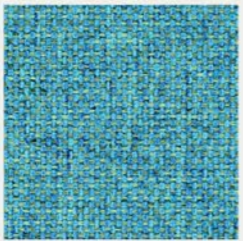
5502



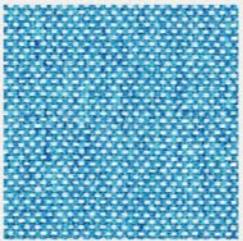
6506



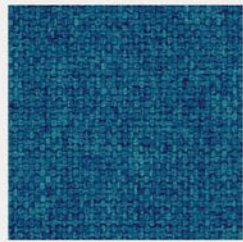
6522



6517



6536



6055



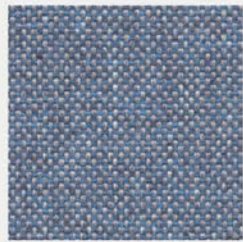
6526



6505



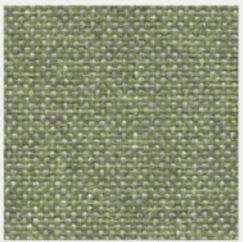
6503



6502



6501



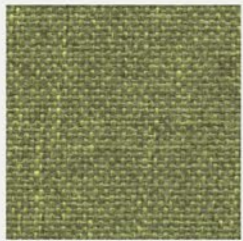
7504



7503



7502



7501



7016

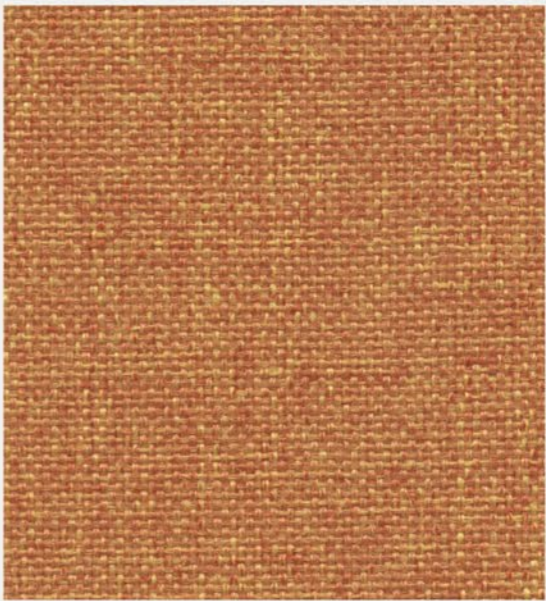


7512

## FIDIVI - ROCCIA



2517



3503



# FABRIC & LEATHER

## FIDIVI - ROCCIA

### PRODUCT SPECIFICATIONS

Description	Yarn dyed 2 color melange fabric. Wool handtouch in 42 natural colorways.	
Application	Office, Contract	
Weight	350 ± 5 % g/ml 250 ± 5 % g/m <sup>2</sup>	
Height	140 ± 2 % cm	
Composition	100% Polyester Trade Mark Trevira CS	
Abrasion Resistance	ISO 12947/2 70.000 ± 10 % Rubs	
Light Fastness	ISO 105-B02 6 (blue scale) Tolerance: from 5 to 8	
Fastness to Rubbing	ISO 105-X12 4/5 (grey scale) Tolerance: from 4 to 5	
Pilling (2000 rubs)	ISO 12945-2 5 Tolerance: from 4 to 5	
Acoustic Performances	ISO 354 (Reverberation Room), 0,6	
Fire Resistance	UNI 9174 Class C1 UNI 9175 Class 1 IM DIN 4102 Class B1 NF P 92 501-7 M1 NF D 60013 Class AM18 EN 1021-1 & 2 BS 5852 CRIB 5 BS 7176 Class Medium Hazard EN 13773 Class 1 can meet OENORM 3800-1 Class B1,Q1,TR1 California TB117 USA NFPA 701 can meet USA NFPA 260 can meet IMO Part 8 Upholstery	Will also pass other flammability standards. Flame retardant performance is dependent upon the foam used.
Certifications	Oekotex Euflower - Ecolabel	
Warranty	5 Years	
Cleaning and Washing		





# Time

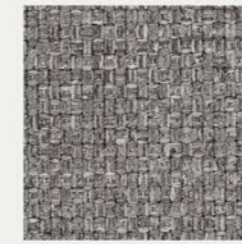
The timeless beauty of charming colours and fresh feelings.

CLASS B

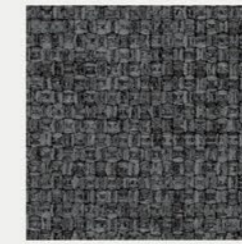
## FIDIVI - TIME



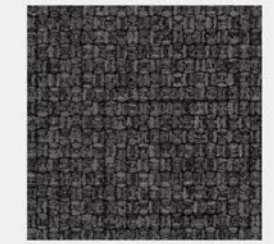
8048



8004



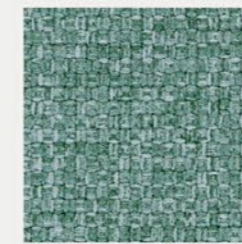
8006



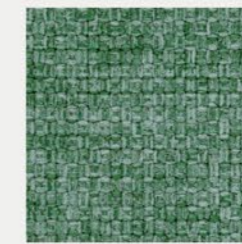
8007



7026



7023



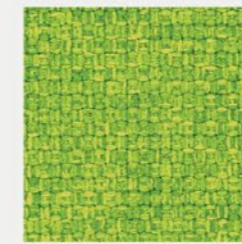
7008



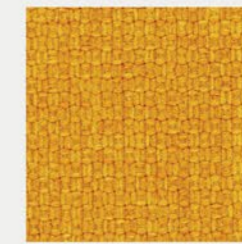
7019



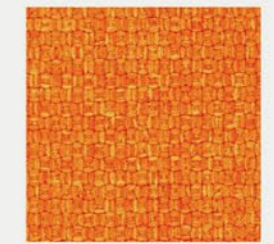
7036



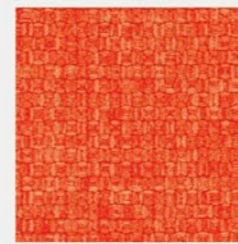
7011



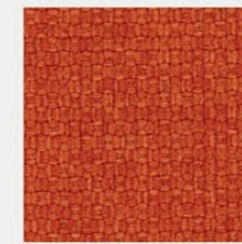
3090



3094



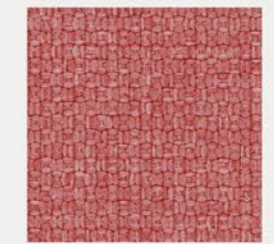
3012



3082



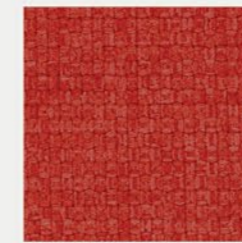
4066



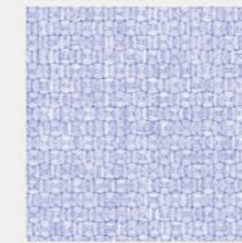
4022



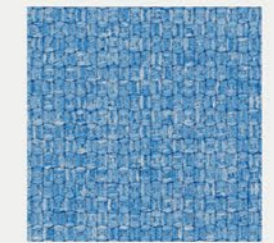
4079



4021



6001

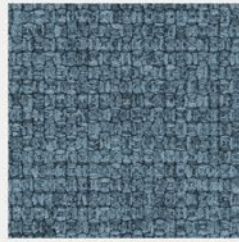


6070



# FABRIC & LEATHER

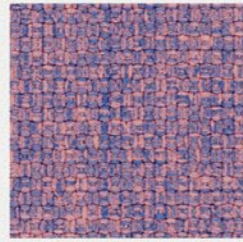
## FIDIVI - TIME



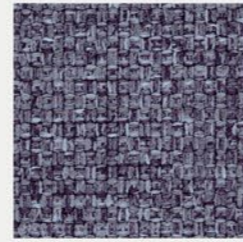
6031



6034



6018



6026



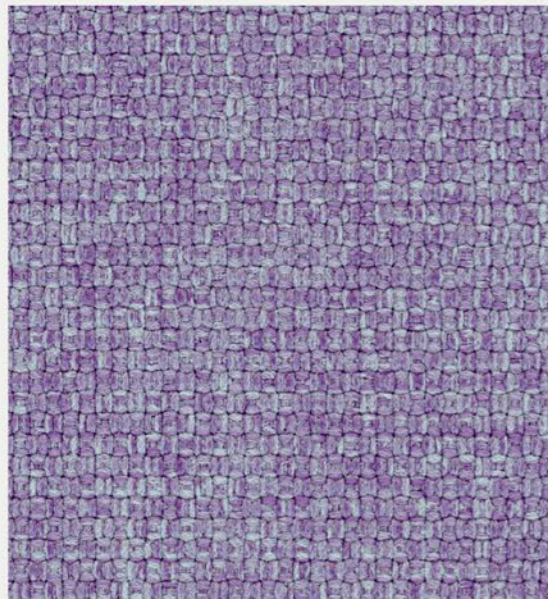
1010



1020



2005



6091

## FIDIVI - TIME

### PRODUCT SPECIFICATIONS

Description	Recycled polyester melange fabric. Piece dyed in 28 colorshades.	
Application	Office, Furniture, Contract	
Weight	490 ± 5 % g/ml 350 ± 5 % g/m <sup>2</sup>	
Height	140 ± 2% cm	
Composition	100% Polyester - Recycled GRS	
Abrasion Resistance	ISO 12947/2 100.000 ± 10% Rubs	
Light Fastness	ISO 105-B02 6 (blue scale) Tolerance: from 5 to 8	
Fastness to Rubbing	ISO 105-X12 4/5 (grey scale) Tolerance: from 5 to 8	
Pilling (2000 rubs)	ISO 12945-2 5 Tolerance: from 5 to 8	
Fire Resistance	UNI 9175 Class 1 IM EN 1021-1 & 2 BS 5852 CRIB 5 part 2 BS 7176 Class Medium Hazard California TB 117-2013	Will also pass other flammability standards. Flame retardant performance is dependent upon the foam used.
Certifications	Oeko-tex GRS	
Warranty	5 Years	
Cleaning and Washing		





# Valencia

ARTIFICIAL LEATHER

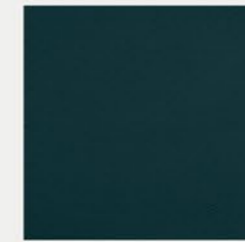
An unique and attractive aesthetic with the combination of high-quality artificial leather and vibrant colors.

CLASS B

## SPRADLING - VALENCIA



LOTUS  
107-2113



TEAL  
107-2119



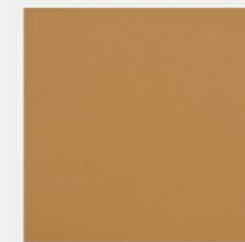
PETROL  
107-5065



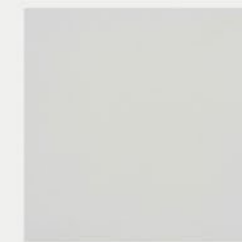
WARM GREY  
107-4044



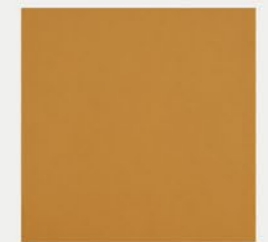
ULTRA VIOLET  
107-2118



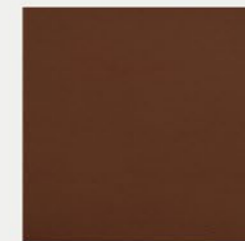
CASHMERE  
107-2117



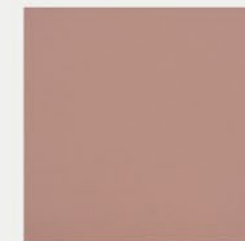
PURE WHITE  
107-9607



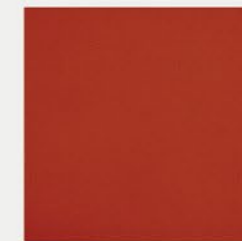
CAMEL  
107-2116



CHESTNUT  
107-2115



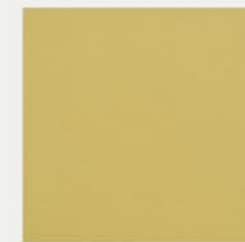
ROSÉ  
107-2114



TOMATO  
107-2112



SQUASH  
107-2111



CITRUS  
107-2109



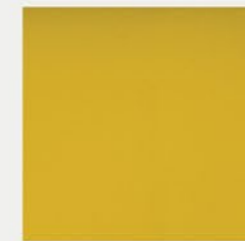
NIGHT  
107-2108



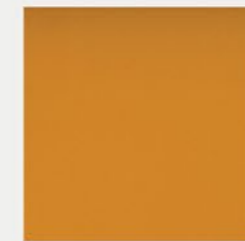
SKYLIGHT  
107-2107



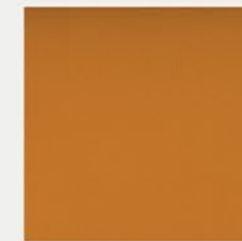
CORAL  
107-2106



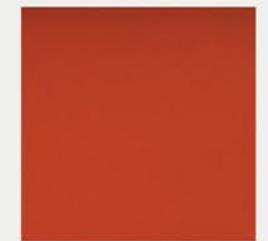
SONNE  
107-2020



SAFRAN  
107-6012



MELONE  
107-6013



ORANGE  
107-6019



SPRADLING - VALENCIA

			
NECTARINE 107-6003	TERRACOTTA 107-0035	BUCHE 107-0033	PRALINÉ 107-0001
			
BRONZE 107-6002	SUMATRA 107-9001	MUSHROOM 107-4001	TAUPE 107-0034
			
COGNAC 107-0002	CHAMPAGNE 107-1001	BEIGE 107-1050	LEINEN 107-1049
			
SISAL 107-1048	WEISS 107-8032	AUSTER 107-4040	PERLE 107-4045
			
PLATIN 107-4043	LICHTGRAU 107-4052	GRAPHITE 107-4003	SCHWARZ 107-9035

Colors may slightly vary due to photographic lighting sources or your monitor settings.

SPRADLING - VALENCIA

			
LAUREL 107-4002	MOSS 107-5002	METEOR 107-4041	MOCCA 107-0020
			
MERLOT 107-2001	PORT 107-2062	KIRSCH 107-2074	ROT 107-2075
			
PINK 107-2021	BERRY 107-2002	AMETHYST 107-7001	TITAN 107-4042
			
LAVENDEL 107-3001	BALTIC 107-3069	DELFT 107-3067	MARINE 107-3068
			
TÜRKIS 107-5057	JADE 107-5056	APFEL 107-5041	OLIVE 107-5001

Colors may slightly vary due to photographic lighting sources or your monitor settings.



# FABRIC & LEATHER

## SPRADLING - VALENCIA



GRUN  
107-5069



SILVER  
107-4020



GOLD  
107-6020



IVORY  
107-1020



PEARLESSENCE  
107-8020



AVOCADO  
107-2110

## SPRADLING - VALENCIA

### PRODUCT SPECIFICATIONS

<b>Composition:</b>	Topcoat :Vinyl   Backing; 100% Polyester Hi-Loft2™
<b>Weight:</b>	650 gr/m2
<b>Width:</b>	min. 137 cm
<b>Roll size:</b>	+/- 30m
<b>Abrasion:</b>	>300.000 cycles (MARTINDALE)
<b>Flame retardancy*:</b>	EN 1021 Part 1 & 2   DIN 4102 B2   MED   ECE R 1 18.02 Anx. 6,7 & 8 IMO 2010 FTP Part 8   UNI 9175 Classe I.IM   UNE 23.727-90 IR/M.2 NF P 92-503 / M2   EN 71-2:2006+ A1:2007   FMVSS 302
<b>Cold Crack:</b>	-23°C
<b>UV-Resistance:</b>	1000 hours: ≥ 6 Blue wool scale
	*This term and any corresponding data refer to the typical performance in the specific tests indicated and should not be construed to imply the behavior of this or any other material under actual fire conditions.
	<b>FINISHES AND TREATMENTS PERMABLOK3®</b>
	Except Valencia Pure White 107-9607 that has PERMABLOK3® Plus
<b>Virucidal Activity</b>	ISO 18184:2019: Coated Fabrics treated with PERMABLOK3® are proven to reduce the presence of Coronavirus** by more than 90% within one hour of contact. ISO 21702:2019: All the Coated fabrics treated with PERMABLOK3® are capable of reducing the Coronavirus** activity by 99,9% within 24 hours of exposure on the surface. ISO 22196:2011. Value of antibacterial*** activity R>2.
<b>Bacteriostatic Properties:</b>	** Testing was conducted with material exposed to Feline Coronavirus (same coronaviridae family, structures and mechanisms similar to SARS-Cov2) *** Testing was conducted with material exposed to Staphylococcus aureus, Staphylococcus aureus (MRSA), Escherichia coli and Klebsiella pneumoniae.
<b>WARRANTY</b>	5 Years. Terms and conditions apply, Warranty conditions are displayed on our website.
<b>CARE AND CLEANING</b>	<ul style="list-style-type: none"> <li>The vinyl should be cleaned periodically in order to maintain its appearance and prevent build-up of dirt and contaminants.</li> <li>Any stain, spills, or soiling should be cleaned up promptly to prevent the possibility of permanent staining.</li> <li>Vinyl fabrics treated with PERMABLOK3® require a minimum of maintenance to retain their good looks. Use soft soapy solutions or special cleaning products for vinyl fabrics to remove stains on the surface of the material. Remove only with a damp white cloth.</li> <li>Lacquers, strong cleaners, detergents, xylene-based solutions, acetone, or MEK cause immediate damage and contribute to the deterioration of the material. The use of such cleaners is at the owner's risk.</li> </ul>

Certain clothing and accessory dyes (such as those used on denim jeans) may migrate to lighter colors. This phenomenon is increased by humidity and temperature and is irreversible. SPRADLING International GmbH, SPRADLING UK Ltd, and EURO SPRADLING S.L.U will not assume responsibility for dye transfer caused by external contaminants and possible permanent staining caused by this phenomenon.

PERMABLOK3® is a registered trademark of Spradling Holdings, Inc.® | Hi-Loft2™ and VALENCIA™ are trademarks of Spradling Holdings, Inc.®



# Angola

A bold mixture of core and effect yarns to bring the perception of bouclé to a new high.

## ANGOLA



X1010



TN7N7



8290



TB1J5



8957



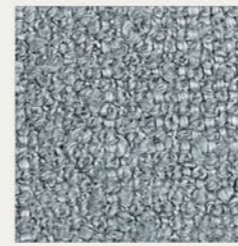
8989



C4C4



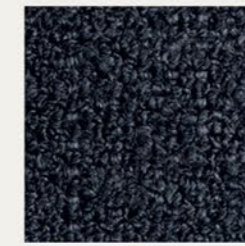
BMBM



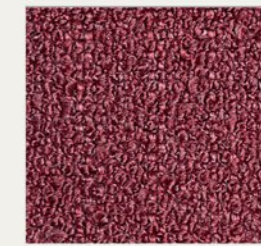
T3636



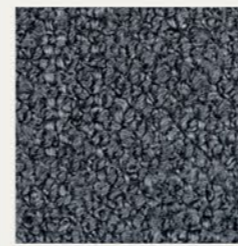
GAGA



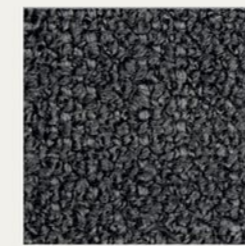
C1C1



5959



U3U3



D8D8



## ANGOLA



XE6G3



Colors may slightly vary due to photographic lighting sources or your monitor settings.

364

## ANGOLA

### PRODUCT SPECIFICATIONS

Technical Informations	Unit	Value	Test Method	Result
Composition		%3 cv, %68 pan, 29%pes		
Weight	gr/m <sup>2</sup>	580 ±%5		
Width	cm	140 ±2		
Resistance to Abrasion	martindale wyzenbeek	50.000 100.000	ISO 12947-2 ASTM D4157	
Pilling	2000 cycle	4/5	EN ISO 12945-2	
Brush Pilling		3/4	D3511-99A	
Colour Fastness to Rubbing	dry wet	4/5 4/5	ISO 105-X12	
Tear Strength	warp weft	193 109	ISO 13937-3	
Tensile Strength	warp weft	2565 905	ISO 13934-1	
Elongation	horizontal vertical	15% 41%	ISO 13934-1	
Seam Slippage	warp weft	2 2,5	ISO 13936-2	
Cigarette Test	BS 5852 PART 1 SOURCE 0 / EN 1021-1 / CALL 117 / NFPA 260			Pass
Bleach Cleanable Test	AATCC 101-ACT TM1 With Extra Process			Pass

Our products fulfil the requirements of Annex XVII of REACH (incl. the use of azo-dyes, heavy metals, etc.) as well as the American requirement regarding total content of lead in children's articles). In stain repellent products, we always use human and environmental friendly C6 fluorocarbons. In FR treatment, we always use DecaBDE free FR compounds. The colours in production might slightly vary from this reference due to different lots in production.

- Wash 30°C gentle cycle.
- Low iron at max 110°C.
- Do not tumble dry.
- Do not bleach.
- Dry-cleaning in perchloroethylene gentle cycle.
- Vacuum regularly. Using soap and water, wipe with a damp cloth or use a special upholstery shampoo. For deeper cleaning, use steam, bleach, alcohol or professional dry clean.

365

Colors may slightly vary due to photographic lighting sources or your monitor settings.

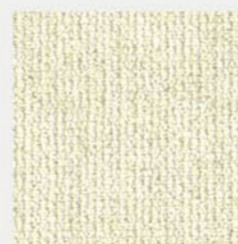


# Loop

A modern touch on traditional design elements. First sight impression, combined with a colourful yarn blend when looking more closely.

CLASS B

LOOP



02



04



19



23



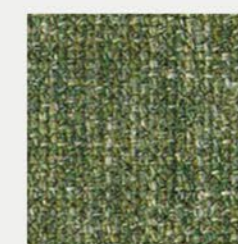
24



28



29



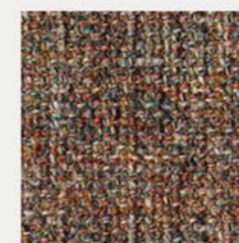
31



30



21



27



40



41



44



08



18



48

367

Colors may slightly vary due to photographic lighting sources or your monitor settings.



## LOOP



39

## LOOP

### PRODUCT SPECIFICATIONS

Technical Informations	Unit	Value	Test Method
Weight	gr/m <sup>2</sup>	509 (± %5)	BS EN ISO 12127:1998
Thickness	mm	1,4	
Width	cm	140 (± %5)	
Roll Meter	mt	50 (± %5)	
Resistance to Abrasion		40.000	EN ISO 12947-2
Seam Slippage	mm	Weft 3-4 / Warp 3-4	ISO 13936-2
Pilling	2000 cycle	5	ISO 12945-2
Colour Fastness to Light		5	TS EN ISO 105-B2
Composition		%28 ACR %56 COT %4 LIN %12 PES	



#### Product Characteristics

- Only valid for Loop colour codes.
- It can be cleaned with neutral cleaning materials. Chemical solvents should not be used.
- The detergent must not include oxide bleach and bleach.
- There may be colour and tone differences between different lots, arising from the nature of the production and within conventionally accepted limits.
- The product should not be exposed to direct sunlight.
- The cutting should be done after the approval of the colour, tone and defect controls by the related parties. In this context, taking into account that, although exceptional, there may be tonal differences of products that arrive in pieces, they should be checked with the delivery of the product before cutting. Making upholstery without above mentioned examination may cause not getting the desired result.
- While cutting or upholstery, the products should never be left folded, nor should they be left under-weight that may cause forming lines on them.
- The tape should never be used on the product surface. This matter, which our company pays attention to, should not be overlooked after the product has been checked or if it is wrapped for a second time during use. When the leftover product should be rolled, please pay attention not to fold it tightly.
- All kinds of leather and velvet should not come into direct contact with the sponge. Sponge should be covered with interlining or cotton lining.
- Stains, such as oil, chocolate, chewed gum should never be cleaned with liquid (water, thinner, acetone and other solvents).
- Dry cleaning methods are also recommended for such stains.
- Vacuum cleaner can be used on daily and weekly basis.
- Please get a confirmation about stocks.
- The using place and purpose of the product should be conventionally accepted places and purposes.
- No liability can be accepted for products that are not used properly.
- The information stated above is of reliable common values. Please ask for special values of the contract.



# Era

A subtle, two tone polyester fabric containing stretch in both directions for ease of upholstery.

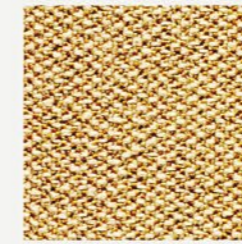
CLASS A



## CAMIRA - ERA



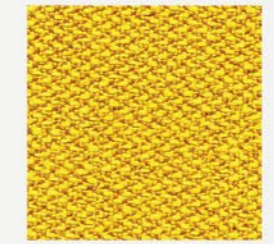
TRANSITION  
CSE30



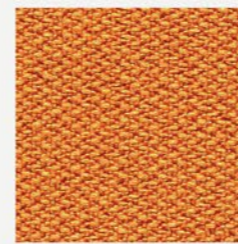
SPLITSECOND  
CSE31



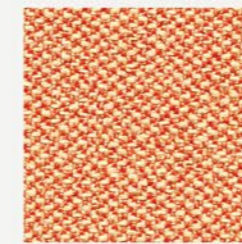
LIFETIME  
CSE03



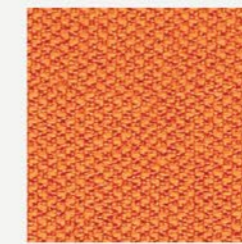
OCCASION  
CSE32



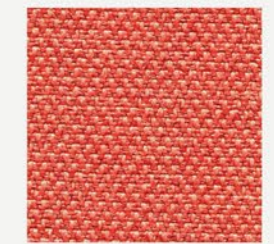
MEASURE  
CSE27



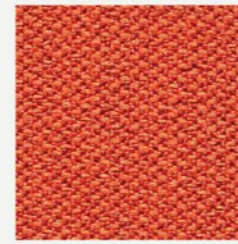
SEQUENCE  
CSE25



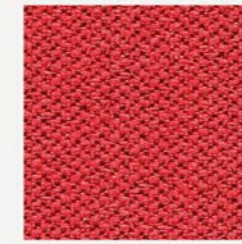
SPAN  
CSE05



TURN  
CSE26



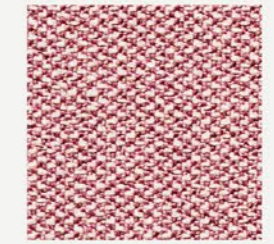
EXPERIENCE  
CSE29



EXTENT  
CSE28



CALENDAR  
CSE19



DATE  
CSE24



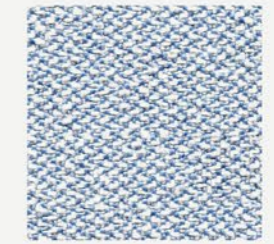
CYCLE  
CSE06



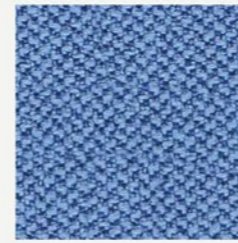
PHASE  
CSE17



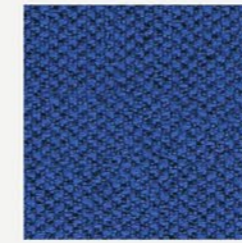
PRIME  
CSE09



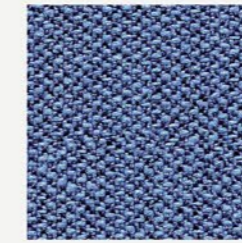
ALLOWANCE  
CSE38



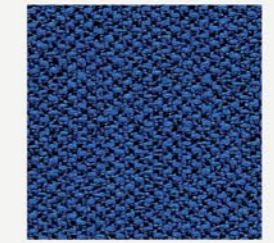
CHAPTER  
CSE08



PERENNIAL  
CSE12



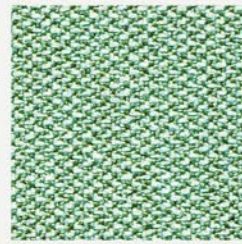
RANGE  
CSE42



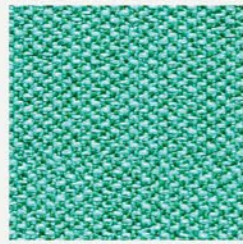
MATURITY  
CSE40



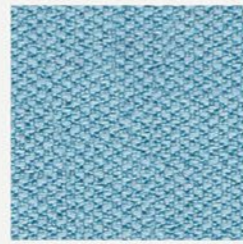
CAMIRA - ERA



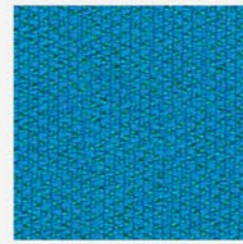
NOTATION  
CSE36



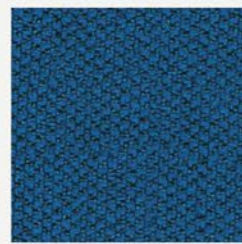
REST  
CSE37



AEON  
CSE20



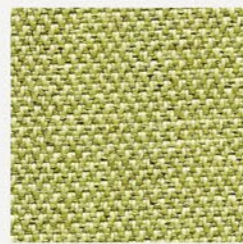
EVERLASTING  
CSE10



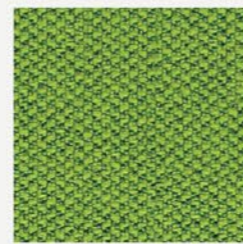
STAGE  
CSE15



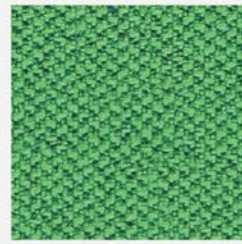
PERIOD  
CSE07



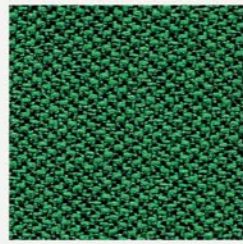
ENDURANCE  
CSE34



TIMELAPSE  
CSE16



EVENT  
CSE18



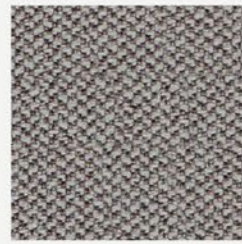
SIGNATURE  
CSE35



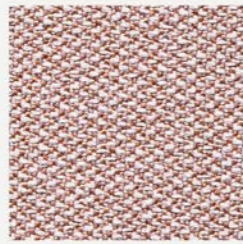
ANALOGUE  
CSE33



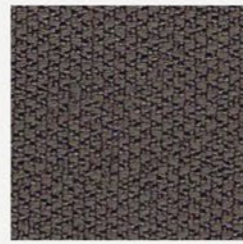
PROMPT  
CSE45



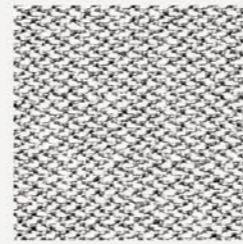
GENERATION  
CSE02



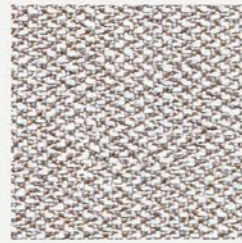
OCCURENCE  
CSE23



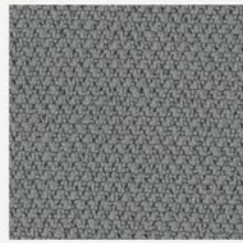
HISTORY  
CSE21



MEMO  
CSE46



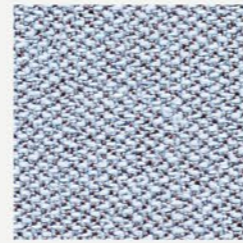
QUOTA  
CSE41



FORECAST  
CSE11

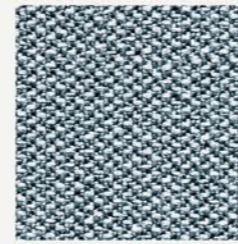


PRESENT  
CSE13



YOUTH  
CSE39

CAMIRA - ERA



LATE  
CSE43



ELAPSE  
CSE44



FORWARD  
CSE14



FUTURIST  
CSE01

PRODUCT SPECIFICATIONS

Application	Task Seating / Soft Seating
Composition	100% Polyester
Environmental	Certified to OEKO-TEX® Standard 100 Certified to Indoor Advantage™ "Gold" Non metallic dyestuffs
Width	140 cm minimum
Weight	320 g/m2 ±5%
Abrasion Resistance	Heavy duty / 10 year guarantee. Independently certified to ≥100,000 Martindale cycles
Flammability	EN 1021 - 1&2 (cigarette & match), BS 7176 Low Hazard EN 13501-1 Adhered Class B, s1, d0, EN 13501-1 Un-adhered Class C, s1, d0 BS 7176 Medium Hazard with EnviroFlam5
Light Fastness	5 (ISO 105 - B02)
Fastness to Rubbing	Wet: 4, Dry: 4 (ISO 105 - X12)
Bleach cleanable	ISO 105 E03 colour change 4 for dilution factor 1:4 chlorine solution.
Guarantee	10 Years

Cleaning  
Vacuum regularly. Wipe with a damp cloth using soap and water or use proprietary upholstery shampoo.  
For deeper cleaning use steam, bleach, alcohol or professionally dry clean. Can be washed at 60°C.



# Xtreme

A modern crepe weave fabric made from 100% post-consumer recycled polyester.

CLASS A



## CAMIRA - XTREME



ADOBO  
YS165



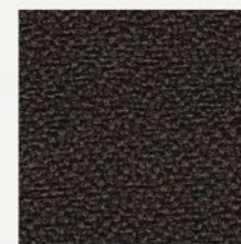
ARUBA  
YS108



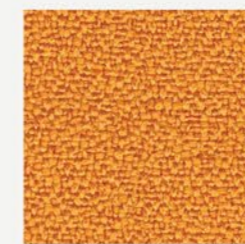
SANDSTORM  
YS071



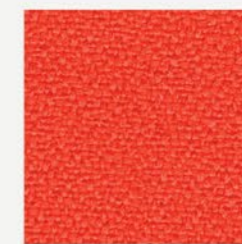
NOUGAT  
YS091



SOMBRERO  
YS046



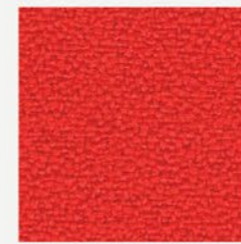
SOLANO  
YS072



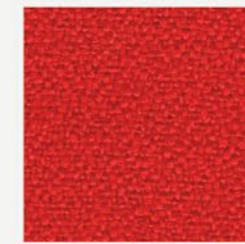
TORTUGA  
YS168



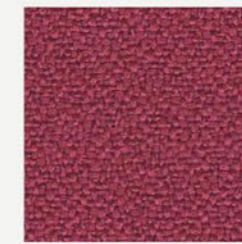
LOBSTER  
YS076



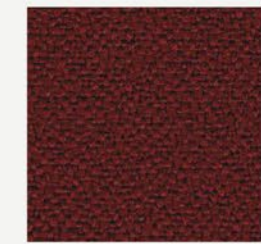
BELIZE  
YS105



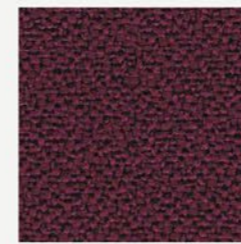
PANAMA  
YS079



DIABLO  
YS101



TOKARA  
YS136



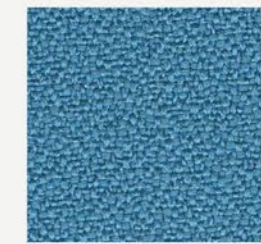
TOBAGO  
YS030



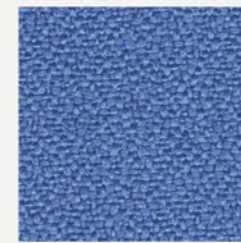
BRIDGETOWN  
YS102



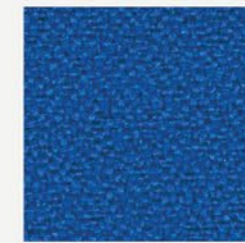
TAROT  
YS084



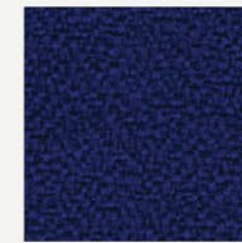
PARASOL  
YS073



BLUEBELL  
YS097



HONEYMOON  
YS035



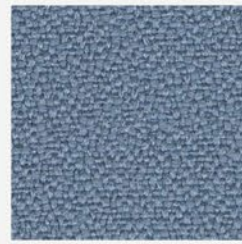
OCEAN  
YS100



CAYMAN  
YS024



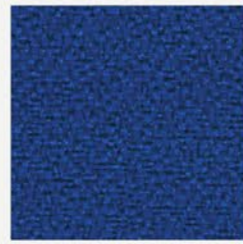
CAMIRA - XTREME



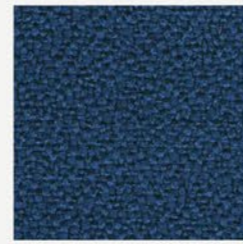
STEEL  
YS095



MARTINIQUE  
YS004



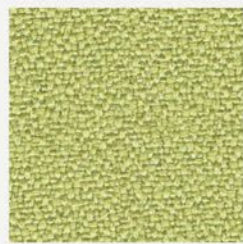
SCUBA  
YS082



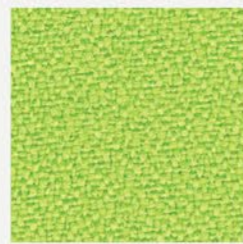
CURACAO  
YS005



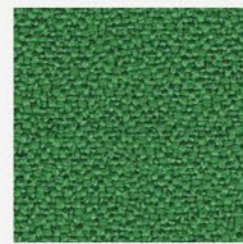
COSTA  
YS026



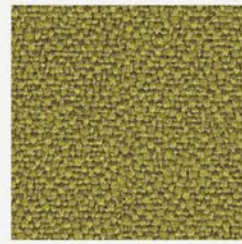
APPLE  
YS096



MADURA  
YS156



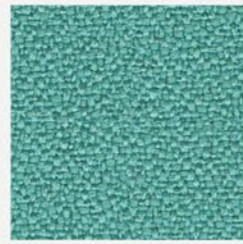
LOMBOK  
YS159



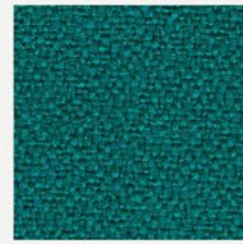
APPLEDORE  
YS077



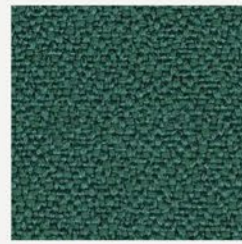
TABOO  
YS045



CAMPECHE  
YS074



TONGA  
YS160



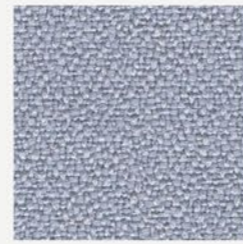
WINDJAMMER  
YS047



KRABI  
YS141



BLIZZARD  
YS081



RUM  
YS173



OSUMI  
YS171



BONAIRE  
YS172

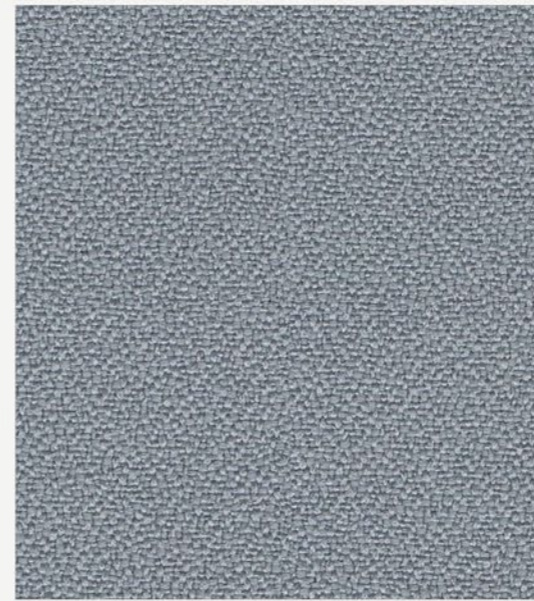


PADANG  
YS145



HAVANA  
YS009

CAMIRA - XTREME



SLIP  
YS094



PRODUCT SPECIFICATIONS

Application	Task Seating
Composition	100% post-consumer recycled polyester
Environmental	Certified to the EU Ecolabel, Certified to OEKO-TEX® Standard 100, Certified to Indoor Advantage™ "Gold" Made from 100% recycled polyester Non metallic dyestuffs
Width	140 cm minimum
Weight	310 g/m2 ±5%
Abrasion Resistance	Heavy duty / 10 year guarantee. Independently certified to ≥100,000 Martindale cycle
Flammability	EN 1021 - 1&2 (cigarette & match), BS 7176 Low Hazard, BS 5852 Ignition Source 5, BS 7176 Medium Hazard, DIN 4102 B1, NF D 60-013 ,ÖNORM B 3825 & A 3800-1 (over 58 kg/m3 CMHR foam), UNI 9175 Classe 1 IM, BS 476 Part 7 Class 1
Light Fastness	6 (ISO 105 - B02)
Fastness to Rubbing	Wet: 4, Dry: 4 (ISO 105 - X12)
Bleach cleanable	ISO 105 E03 colour change 4 for dilution factor 1:4 chlorine solution.
Guarantee	10 Years

Cleaning  
Vacuum regularly. Wipe with a damp cloth using soap and water or use proprietary upholstery shampoo. For deeper cleaning use steam, bleach, alcohol or professionally dry clean. Can be washed at 60°C.



# Athena

A mix of polyester and cotton, suitable for upholstery with prestigious colours and soft touch.

CLASS A



## ATHENA



1152



1153



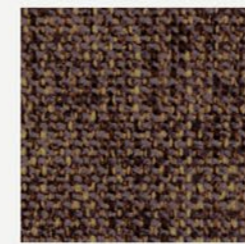
1155



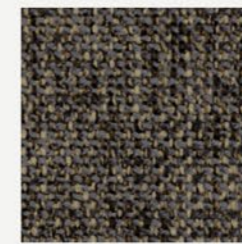
1162



1173



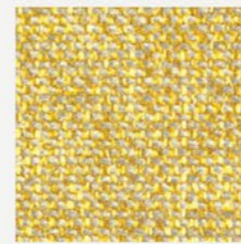
1228



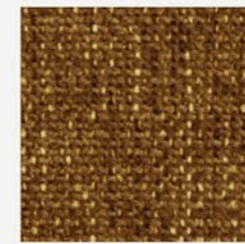
1144



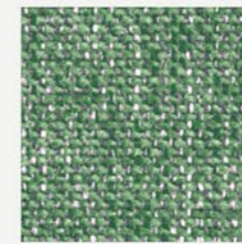
1229



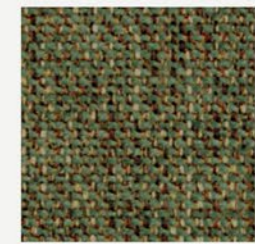
1192



1206



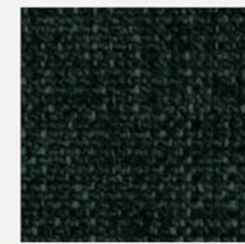
1199



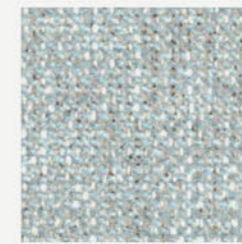
1187



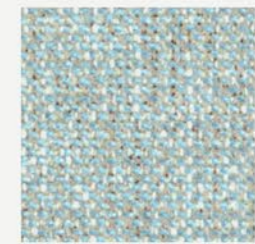
1132



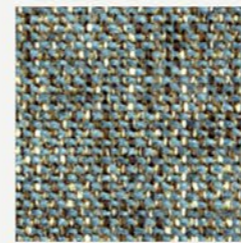
1224



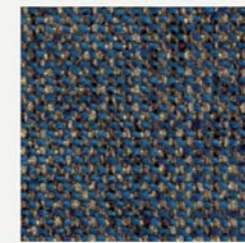
1179



1500



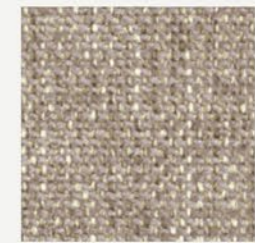
1188



1190



1225



1156



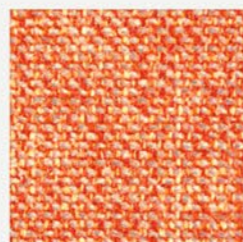
## ATHENA



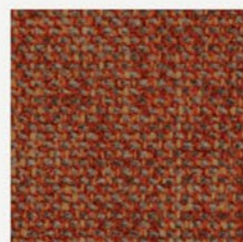
1233



1226



1203



1204



1170



1171



1141



1175



1140



1198



380

## ATHENA

### PRODUCT SPECIFICATIONS

Technical Informations	Unit	Value	Test Method
Composition	60% polyester, 40% cotton		
Weight	gr/m <sup>2</sup>	440 ±20	ISO 2286-2
Width	cm	140 ±2	
Resistance to Abrasion	cycles	>40.000	ISO 12947-1
Colour Fastness to Light	bw	4/5	ISO 105-B02
Colour Fastness to Rubbing	wet dry	>5 >5	ISO 105-X12
Roll Length	m	50 ±10	

#### Liquid Stains

Blot the liquid stain gently with a high-absorbent material. Pat dry the area gently with a dry material to remove the remaining humidity (cotton cloth, paper towel, etc...). If the stain from the spill remains, remove the stain with a soapy cloth without diffusing the stain. After each rubbing motion, refresh the clean soapy cloth in order to prevent soiling.

#### Solid Particles

Remove the excess soiling with ultimate care without diffusing. Remove the solid particle from the fabric surface with the help of a soft spatula. To remove dust, use a vacuum cleaner or a soft brush. The remaining stains should be removed by rubbing with a soapy cloth in circular motion.

#### Ball-Point Pen and Similar Difficult Stains

Dampen a clean cotton cloth in a white soap solution. Rub the stain off gently. Clean the surface with the damp cloth and leave the fabric for drying.

#### Alcohol Derives

Petroleum and alkali based solvents should not be used for cleaning. After all cleaning processes, the drying should be done with a low temperature blow dryer in large circular motion or the fabric should be left for natural drying. After drying, misoriented and damaged piles should be fixed with a soft brush.

Valid for all colors. Red colors may have less color fastness to rubbing.



# Canyon

ARTIFICIAL LEATHER

High abrasion resistant  
and flame retardant  
high-quality easy to  
clean artificial leather  
with a genuine leather  
look.

CLASS A

## CANYON



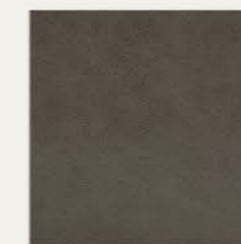
21745



22658



22661



21747



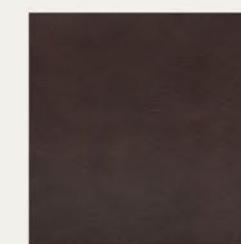
22662



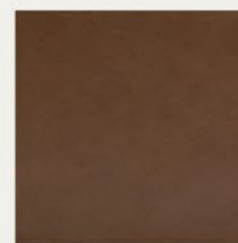
22663



21748



21753



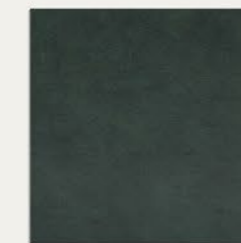
21749



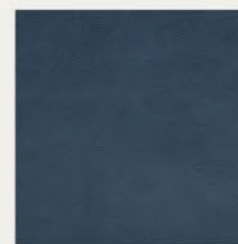
21750



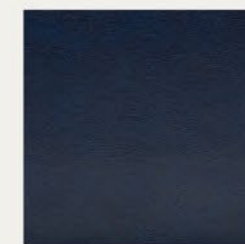
21751



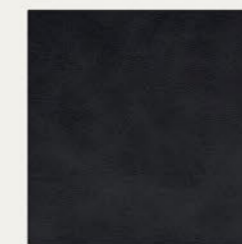
21754



21755



21757



21758



## CANYON



21728

## CANYON

### PRODUCT SPECIFICATIONS

Technical Informations	Unit	Value	Test Method
Composition		80% pvc, 18% polyester, %2 pu	
Weight	gr/m <sup>2</sup>	700 ±5%	TS 6450
Thickness	mm	1,35 ±5%	ISO 2589
Width	cm	140 ±2	TS 4119
Roll Length	m	30	
Resistance to Abrasion	martindale	>100.000	BS EN ISO 12947-2:2016
Tensile Strength (Length)	n	485	ISO 1421
Tensile Strength (Across)	n	290	ISO 1421
Elongation Strenght		Length 68 g Across 240 g	ISO 1421
Colour Fastness to Light		+5	DIN EN ISO 105-B02:1994
Flammability		Pass	BS 5852-1:1979 EN 1021 1-2

#### Product Characteristics

- Only valid for Canyon colour codes.
- The cleaning process should start around the stain and held without dispersing the stain. It should be cleaned by gently wiping.
- You can wipe off ballpoint pen stains with 20% ethanol. For other stains such as coffee, tea, milk, cosmetics, jam, syrup, fruit juice 40c lukewarm water, neutral cleaning agents and sponge can be used.
- In oil and grease stains, the stain can be wiped of with the help of a brush after the chalk powder is used for covering the stain.
- The shoe polish stain can be removed with perchloroethylene or 10% diluted ammonia.
- All kinds of real and artificial leather should not be cleaned with bleach, detergent, coloured soap and similar materials and the product should not be exposed to direct sunlight. It should be kept away from sources of strong light (spot, etc.) and heat.
- There may be colour and tone differences between different lots, arising from the nature of the production and within conventionally accepted limits.
- All kinds of leather and velvet should not come into direct contact with the sponge. Sponge should be covered with interlining or cotton lining.
- Please get a confirmation about stocks.





# New King

Easy to clean artificial leather made of a special PVC and polyurethane mix with the support of polyester base lining.

CLASS A



## NEW KING



6



13742



13743



13719



62501



13723



13724



13725



62503



62504



17563



62502



62505



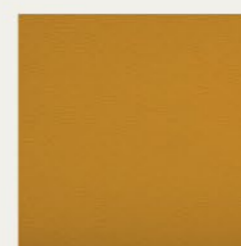
17566



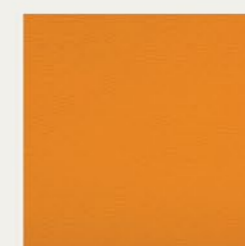
13823



17567



24327



13592



13721



24329



## NEW KING



13822



17565



13591



24328



17560



17568



13727

## NEW KING

### PRODUCT SPECIFICATIONS

Technical Informations	Unit	Value	Test Method
Composition		76% pvc, 22% polyester, 2% pu	
Weight	gr/m <sup>2</sup>	600 ±5%	
Width	cm	138-140	
Roll Length	m	30	
Resistance to Abrasion	mantindale	230.000	BS EN ISO 12947-2:1999&4:1999
Bursting Strength		> 600 kPa	BS EN ISO 5470-1:1999
Elongation Strength	warp weft	5803 g. 2853 g.	BS EN ISO 4674-1:1999
Resistance to Seam Slippage	warp weft	250 n 250 n	BS 3320:1998
Flammability		pass	BS 5852-1:1979 EN 1021 1-2
Light Fastness		5	DIN EN ISO 105-B02:2002

#### Product Characteristics

- Only valid for New King colour codes.
- Our Atlantis product line has flame retardancy feature.
- The cleaning process should start around the stain and held without dispersing the stain. It should be cleaned by gently wiping.
- All kinds of real and artificial leather should not be cleaned with bleach, detergent, coloured soap and similar materials and the product should not be exposed to direct sunlight.
- The product should be kept away from sources of strong light (spot, etc.) and heat.
- The using place and purpose of the product should be conventionally accepted places and purposes. No liability can be accepted for products that are not used properly.
- Leather products should not be kept in plastic packaging and humid places for a long time. Solid objects such as toys and jewellery may cause unintended starches on the material.
- Leather-covered products should be placed at least 50 cm away from heat sources (stoves, radiators, fireplaces, etc.). Otherwise, the leather may lose moisture which may cause undesired cracks.
- Impacts, scratches, etc. that may occur due to transportation and external. should be considered out of warranty.
- Direct contact of pets with leather goods should be prevented.
- Direct contact of the products with high surface temperature (iron, etc.) with the leather may cause a damage.
- Protect the leather from harsh blows.
- Since ink on newspapers or magazines may get on the product and leave a permanent stain, do not leave it on the product. Especially if you sit with new jeans that give dark coloured paint on light coloured leather as an example, there may be stains. Note that this stain is not caused by the leather itself, but by the trousers that dye and colour.
- Weekly remove the dust or dirt on the surface of the product with a damp white and soft cotton cloth dampened with soapy water, rinse and dry when necessary.
- When coffee, tea, etc. spilled: Use a highly absorbent white cloth or paper. Do not delete it immediately! Make sure the stain is absorbed by the cloth or paper.
- Wipe off the remaining moisture with a soft cloth in circular motions.
- Alcohol and cologne are not recommended for difficult stains such as ink, ballpoint pen, lipstick. Wipe with warm soapy water with gentle circular movements.
- There may be colour and tone differences between different lots, arising from the nature of the production and within conventionally accepted limits.
- Please get a confirmation about stocks.



Colors may slightly vary due to photographic lighting sources or your monitor settings.

Colors may slightly vary due to photographic lighting sources or your monitor settings.



# New Sabine

Water repellent and high-colored material with linen effect.

CLASS A



## NEW SABINE



WHITE



IVORY



TAN



SAND



SILVER



TAUPE



STONE



SADDLE



PALE BROWN



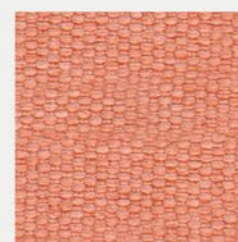
BROWN



CHOCO



WINE



BEIGE RED



MAROC



APRICOT



KIWI



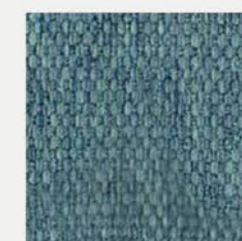
CEMENT GREY



GREEN GREY



NORDIC



AQUA



# FABRIC & LEATHER



## NEW SABINE



BLUE



BLACK



ANTRASIT



396

## NEW SABINE

### PRODUCT SPECIFICATIONS

Technical Informations	Unit	Limit	Value	Test Method
Composition	100% polyester			
Weight	gr/m <sup>2</sup>		380	ISO 3801
Width	cm		137	ISO 22198
Roll Meter	m		50	ISO 12947-2 ISO 1294
Resistance to Abrasion	martindale		40.000	BS EN ISO 12947-2
Tear Strength	n	warp weft	190 154	ISO 13937-2
Resistance to Seam Slippage	mm	warp weft	1-2 0-1	ISO 13906-2
Pilling	2000 dvr		4	ISO 12945-2
Light Fastness		dry wet	5 5	ISO 105-X12

#### Product Characteristics

- Only valid for New Sabine colour codes.
- It can be cleaned with neutral cleaning materials. Chemical solvents should not be used.
- The detergent must not include oxide bleach and bleach.
- There may be colour and tone differences between different lots, arising from the nature of the production and within conventionally accepted limits.
- The product should not be exposed to direct sunlight.
- The cutting should be done after the approval of the colour, tone and defect controls by the related parties. In this context, taking into account that, although exceptional, there may be tonal differences of products that arrive in pieces, they should be checked with the delivery of the product before cutting. Making upholstery without above mentioned examination may cause not getting the desired result.
- While cutting or upholstery, the products should never be left folded, nor should they be left under-weight that may cause forming lines on them.
- The tape should never be used on the product surface. This matter, which our company pays attention to, should not be overlooked after the product has been checked or if it is wrapped for a second time during use. When the leftover product should be rolled, please pay attention not to fold it tightly.
- All kinds of leather and velvet should not come into direct contact with the sponge. Sponge should be covered with interlining or cotton lining.
- Stains, such as oil, chocolate, chewed gum should never be cleaned with liquid (water, thinner, acetone and other solvents).
- Dry cleaning methods are also recommended for such stains.
- Vacuum cleaner can be used on daily and weekly basis.
- The dark colours of this product, which is produced as ball painting, should be cleaned with a damp cloth after laying and afterwards, the paint crumbs that could remain between the textures. This process can be done several times if necessary.
- The product has a teflon feature.
- Please get a confirmation about stocks.

397

Colors may slightly vary due to photographic lighting sources or your monitor settings.



# Nino

High abrasion resistant material, suitable for contract with a wool-like look and touch.

CLASS A



## NINO



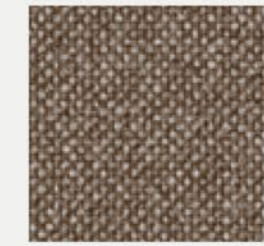
135-135



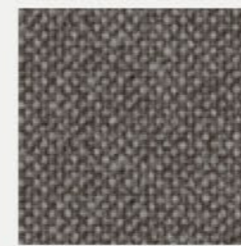
35-135



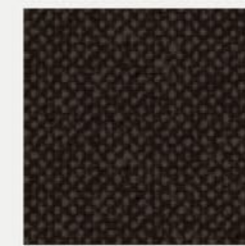
17-135



18-17



133-38



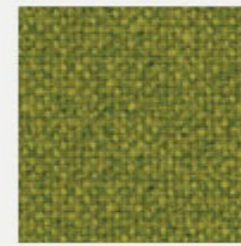
69-38



18-72



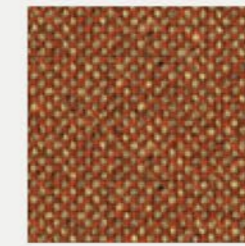
38-38



143-12



147-12



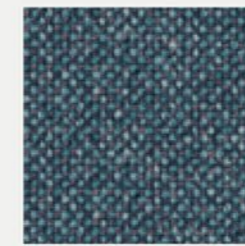
143-87



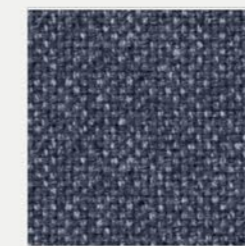
52-27



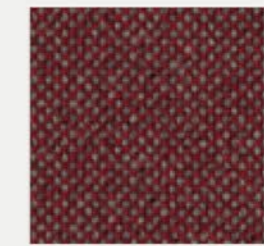
22-27



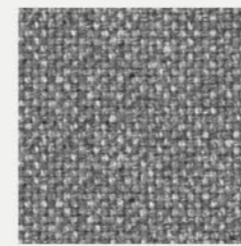
22-147



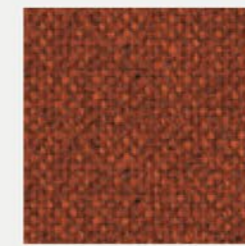
27-147



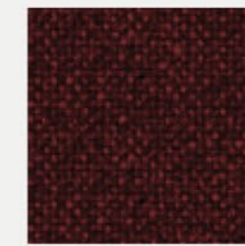
130-32



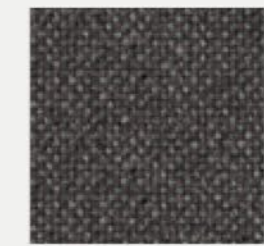
24-24



87-87



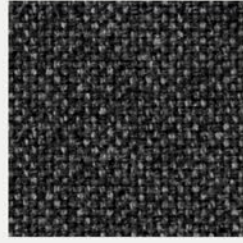
69-87



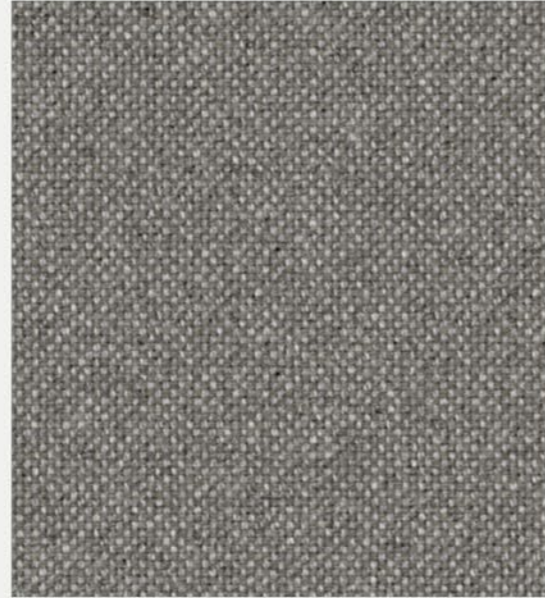
72-24



## NINO



09-24



07-135

## NINO

### PRODUCT SPECIFICATIONS

Technical Informations	Unit	Value	Test Method
Composition	100% polyester		
Weight	gr/m <sup>2</sup>	469 ±10%	
Width	cm	140 ±2	
Roll Meter	m	50	
Resistance to Abrasion	tour	70.000	ISO 12947-2:1998
Light Fastness		4-5	ISO 105-X12:2001
Pilling		4-5	ISO 12945-2:2000

#### Product Characteristics

- Only valid for Nino colour codes.
  - It can be cleaned with neutral cleaning materials. Chemical solvents should not be used.
  - The detergent must not include oxide bleach and bleach.
  - There may be colour and tone differences between different lots, arising from the nature of the production and within conventionally accepted limits.
  - The product should not be exposed to direct sunlight.
  - The cutting should be done after the approval of the colour, tone and defect controls by the related parties. In this context, taking into account that, although exceptional, there may be tonal differences of products that arrive in pieces, they should be checked with the delivery of the product before cutting. Making upholstery without above mentioned examination may cause not getting the desired result.
  - While cutting or upholstery, the products should never be left folded, nor should they be left under-weight that may cause forming lines on them.
  - The tape should never be used on the product surface. This matter, which our company pays attention to, should not be overlooked after the product has been checked or if it is wrapped for a second time during use. When the leftover product should be rolled, please pay attention not to fold it tightly.
  - All kinds of leather and velvet should not come into direct contact with the sponge. Sponge should be covered with interlining or cotton lining.
  - Stains, such as oil, chocolate, chewed gum should never be cleaned with liquid (water, thinner, acetone and other solvents).
- Dry cleaning methods are also recommended for such stains.
- Vacuum cleaner can be used on daily and weekly basis.





# Gana

Voluminous fabric  
with a 3D look  
emerging from  
opposite colour  
schemes.  
A balanced view  
in every space.

CLASS A

## GANNA



01-01



01-08



01-06



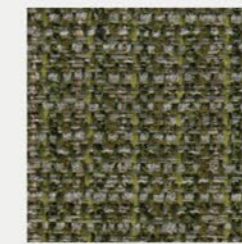
01-04



02-01



01-07



02-05



01-03



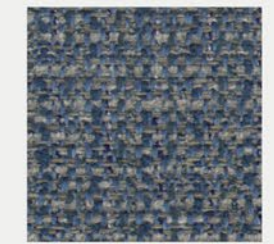
02-02



02-04



02-09



02-08



02-07



02-06



GANA



01-05

GANA

## PRODUCT SPECIFICATIONS

Technical Informations	Unit	Value	Test Method
Weight	gr/m <sup>2</sup>	330 (± %5)	
Thickness	mm		
Width	cm	140	
Roll Meter	mt	50	
Resistance to Abrasion		40.000	EN ISO 12947-2
Tensile Strength	N	Weft-> 983 N Warp-> 953 N	EN ISO 13934-1
Tear Strength	N	Weft-> 81 N Warp-> 115 N	EN ISO 13937-3
Seam Slippage	mm	Weft-> 4,3 mm Warp-> 2,4 mm	EN ISO 13936-2
Pilling	2000 cycle	4-5	ISO 12945-2
Colour Fastness - WET		3-4	ISO 105-X12
Colour Fastness - DRY		4	ISO 105-X12
Colour Fastness to Light		4-6	ISO 105 B02
Composition		%77 PES %23 PAN	



### Product Characteristics

- Only valid for Gana colour codes.
- It can be cleaned with neutral cleaning materials. Chemical solvents should not be used.
- The detergent must not include oxide bleach and bleach.
- There may be colour and tone differences between different lots, arising from the nature of the production and within conventionally accepted limits.
- The product should not be exposed to direct sunlight.
- The cutting should be done after the approval of the colour, tone and defect controls by the related parties. In this context, taking into account that, although exceptional, there may be tonal differences of products that arrive in pieces, they should be checked with the delivery of the product before cutting. Making upholstery without above mentioned examination may cause not getting the desired result.
- While cutting or upholstery, the products should never be left folded, nor should they be left under-weight that may cause forming lines on them.
- The tape should never be used on the product surface. This matter, which our company pays attention to, should not be overlooked after the product has been checked or if it is wrapped for a second time during use. When the leftover product should be rolled, please pay attention not to fold it tightly.
- All kinds of leather and velvet should not come into direct contact with the sponge. Sponge should be covered with interlining or cotton lining.
- Stains, such as oil, chocolate, chewed gum should never be cleaned with liquid (water, thinner, acetone and other solvents).
- Dry cleaning methods are also recommended for such stains.
- Vacuum cleaner can be used on daily and weekly basis.
- Please get a confirmation about stocks.
- The using place and purpose of the product should be conventionally accepted places and purposes.
- No liability can be accepted for products that are not used properly.
- The information stated above is of reliable common values. Please ask for special values of the contract.



# Twister

Durable and eye-pleasing fabric that adds inspiration to modern spaces.

CLASS A

## TWISTER



9852



9855



9859



16060



16056



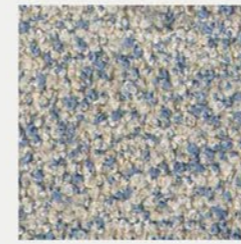
5405



16059



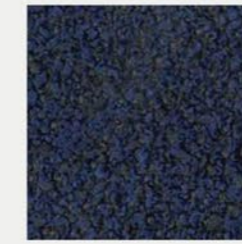
1202



9858



5401



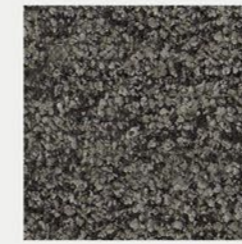
5408



5406



5404



5403



503



501



## TWISTER



16054

## TWISTER

### PRODUCT SPECIFICATIONS

Technical Informations	Unit	Value	Test Method
Weight	gr/m <sup>2</sup>	507 (± %5)	BS EN ISO 12127:1998
Thickness	mm	1,5	
Width	cm	140 (± %5)	
Roll Meter	mt	40 (± %5)	
Resistance to Abrasion		50.000	EN ISO 12947-2
Seam Slippage	mm	Weft 2-3 / Warp 2-3	ISO 13936-2
Pilling	2000 cycle	4-5	ISO 12945-2
Colour Fastness to Light		5	TS EN ISO 105-B2
Composition		%13 COT %37 PES % 50 PP	



#### Product Characteristics

- Only valid for Twister colour codes.
- It can be cleaned with neutral cleaning materials. Chemical solvents should not be used.
- The detergent must not include oxide bleach and bleach.
- There may be colour and tone differences between different lots, arising from the nature of the production and within conventionally accepted limits.
- The product should not be exposed to direct sunlight.
- The cutting should be done after the approval of the colour, tone and defect controls by the related parties. In this context, taking into account that, although exceptional, there may be tonal differences of products that arrive in pieces, they should be checked with the delivery of the product before cutting. Making upholstery without above mentioned examination may cause not getting the desired result.
- While cutting or upholstery, the products should never be left folded, nor should they be left under-weight that may cause forming lines on them.
- The tape should never be used on the product surface. This matter, which our company pays attention to, should not be overlooked after the product has been checked or if it is wrapped for a second time during use. When the leftover product should be rolled, please pay attention not to fold it tightly.
- All kinds of leather and velvet should not come into direct contact with the sponge. Sponge should be covered with interlining or cotton lining.
- Stains, such as oil, chocolate, chewed gum should never be cleaned with liquid (water, thinner, acetone and other solvents).
- Dry cleaning methods are also recommended for such stains.
- Vacuum cleaner can be used on daily and weekly basis.
- Please get a confirmation about stocks.
- The using place and purpose of the product should be conventionally accepted places and purposes.
- No liability can be accepted for products that are not used properly.
- The information stated above is of reliable common values. Please ask for special values of the contract.



# Plain Melange

Water repellent, stain resistant and mildew resistant fabric, designed to furnish indoor and outdoor spaces.

Only for Sole Collection.

**CLASS A**

IRISUN - PLAIN MELANGE



020



783



835



018



070



834



072



693



875



016



879



079



872



690



876



694



870



882



833



583

411

Colors may slightly vary due to photographic lighting sources or your monitor settings.



## IRISUN - PLAIN MELANGE



874



## IRISUN - PLAIN MELANGE

### PRODUCT SPECIFICATIONS

Yarn	100% solution dyed acrylic
Width	137 cm
Roll length	30 m
Weight	240 gr/m <sup>2</sup>
Martindal	15000 cycles
Finishing	Water repellent, anti-stain and anti-mould treatment
Oil-repellency	5 off 8
Spray Test	5 off 5
UV Colour fastness	7 off 8
Colour fastness to weather	7 off 8
Colour fastness after washing at 40°C	5 off 5
Flame resistance	CAL TB 117 - 2013 Section 1
Warranty	5 years
Tolerance	± 5%
Care	See the ISO symbols
Biocides	It contains biocidal agent with approved active substances: Octyl Isothiazolinone



# Bogota

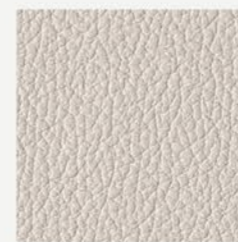
REAL LEATHER

Real leather that has a pigmented and protective top coat with a soft handle and a silky matt finish.

## BOGOTA



109837



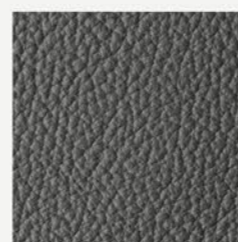
158



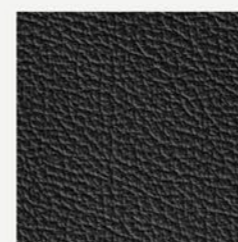
316



4460



109836



106984



344



9680



109839



109840



109843



109841



109842



699



677



2078



109838



1609



2829



BOGOTA



8371



BOGOTA

PRODUCT SPECIFICATIONS

BOGOTA

Test	Method	Result
Colour fastness to rubbing Nr. 500 dry rubs Nr. 150 wet rubs Nr. 80 alkaline pH 8	IUF 450/UNI EN ISO 11640 IUF 450/UNI EN ISO 11640 IUF 450/UNI EN ISO 11640	>= 4 grey scale >= 4 grey scale >= 4 grey scale
Flexing endurance	IUP 20 / UNI EN ISO 5402	>= 30.000
Tear strength	IUP 40 / UNI EN ISO 3377-1	>= 20 N
Adhesion	IUF 470 / UNI EN ISO 11644	>= 3.50 N/cm
Light resistance (xenon test)	IUF 402 / UNI EN ISO 105-B02	5 blue scale
Fire resistance	UNI EN ISO 1021-1/2 BS 5852 1991 Sec. 4 NI/0-1 California T.B. 117	Pass Pass Pass

Product Characteristics

- Avoid placing leather near direct sunlight.
- Keep the leather away from heat sources.
- Dust regularly with a soft and dry cloth.
- If a spill should occur, blot immediately with a clean absorbent cloth or sponge.
- For deeper cleansing use a lightly damp cloth with natural soap. Do not saturate.
- Do not rub. Use a circular motion and clean the entire surface.
- Using a soft and dry cloth, dry immediately after the treatment.
- Never use household cleaning agents, furniture polishes, ammonia, bleach, varnish, oils or similar.
- If you wish to use specifically made creams or lotions for leather upkeep and care feel please consult specialized companies and leather professionals who supply such sets. If you need recommendations on who to consult, we are happy to indicate.

All our leathers comply with the strict regulations and EU Directives covering the use and presence of PCB, CFC, Chromo VI, Dimethylfumarate (DMF) and Azo dyestuffs during the tanning process. Due to the natural properties of leather colour variations between one dye lot and another may occur.

This technical specification sheet replaces any copies in your possession. The values indicated in this sheet refer to the leather at the time of supply. Once the leather has been processed, cut, marked we can no longer guarantee the same values.

Considering the natural aspect of this product and unpredictable related factors, we reserve the right to change the indicated specifications at any time without prior notice.

Important Note

Please note that leather is natural material that becomes soft and stretches over time.



# UPHOLSTERY CATEGORIES



	BRAND	NAME	TYPE	COMPOSITION	MARTINDALE	FLAMMABILITY
CLASS A	CAMIRA	ERA	FABRIC	100% Polyester	100.000	• En 1021 - 1&2 [Cigarette & Match] • <b>Optional:</b> Bs 5852 Ignition Source 5 With Enviroflam5 [Crib5]
	CAMIRA	XTREME	FABRIC	100% Polyester	100.000	• En 1021 - 1&2 [Cigarette & Match] • <b>Optional:</b> Bs 5852 Ignition Source 5 With Enviroflam5 [Crib5]
	SFC	ATHENA	FABRIC	60% Polyester, 40% Cotton	40.000	• <b>Optional:</b> Bs 5852 Part 1
	ALYA	CANYON	ARTIFICIAL LEATHER	80% Pvc, 18% Polyester, %2 Pu	100.000	• Bs 5852 Part 1
	ALYA	NEW KING	ARTIFICIAL LEATHER	76% Pvc, 22% Polyester, 2% Pu	230.000	• Bs 5852 Part 1
	ALYA	NEW SABINE	FABRIC	%100 Polyester	40.000	• <b>Optional:</b> Bs 5852 Part 1
	ALYA	NINO	FABRIC	%100 Polyester	70.000	• <b>Optional:</b> Bs 5852 Part 1
	ALYA	GANA	FABRIC	%77 Pes % 23 Pan	40.000	• <b>Optional:</b> Bs 5852 Part 1
	ALYA	TWISTER	FABRIC	%13 Cot, % 37 Pes, % 50 Pp	50.000	• <b>Optional:</b> Bs 5852 Part 1
	IRUSUN	PLAIN MELANGE	FABRIC	100% Solution dyed acrylic	15.000	• CAL TB 117 - 2013 Section 1
CLASS B	CAMIRA	ASPECT	FABRIC	75% Trevira® Cs Flame Retardant Polyester, 25% Polyester	50.000	• En 1021 - 1&2 [Cigarette & Match]
	CAMIRA	QUEST	FABRIC	100% Post-Consumer Recycled Polyester Including 75% Seaqual® Yarn	100.000	• En 1021 - 1&2 [Cigarette & Match] • <b>Optional:</b> Crib5
	FIDIVI	MILANO	FABRIC	100% Polyester Trade Mark Trevira Cs	80.000	• En 1021 - 1&2 [Cigarette & Match] • Bs 5852 Ignition Source 5 [Crib5]
	FIDIVI	ROCCIA	FABRIC	100% Polyester Trade Mark Trevira Cs	70.000	• En 1021 - 1&2 [Cigarette & Match] • Bs 5852 Ignition Source 5 [Crib5]
	FIDIVI	TIME	FABRIC	100% Polyester - Recycled Grs	100.000	• En 1021 - 1&2 [Cigarette & Match] • Bs 5852 Ignition Source 5 [Crib5]
	SPRADLING	VALENCIA	ARTIFICIAL LEATHER	Vinyl / Urethane Topcoat Topcoat: Vinyl - Backing: 100% Polyester Hi-Loft™	300.000	• En 1021 - 1&2 [Cigarette & Match]
	KETS	ANGOLA	FABRIC	%3 Cv, %68 Pan, 29% Pes	50.000	• Bs 5852 Part 1
	ALYA	LOOP	FABRIC	%28 Acr, %56 Cot, %4 Lin, %12 Pes	40.000	• <b>Optional:</b> Bs 5852 Part 1
CLASS C	CAMIRA	MAIN LINE FLAX	FABRIC	75% Virgin Wool, 25% Flax	50.000	• Bs 5852 Ignition Source 5 [Crib5]
	CAMIRA	VITA	ARTIFICIAL LEATHER	Surface: 98% Pvc, 2% Pu Substrate: 100% Cotton	100.000	• En 1021 - 1&2 [Cigarette & Match] • Bs 5852 Ignition Source 5 [Crib5]
	FIDIVI	FOX	FABRIC	100% Polyester Trade Mark Trevira Cs	120.000	• En 1021 - 1&2 [Cigarette & Match] • Bs 5852 Ignition Source 5 [Crib5]
	FIDIVI	LASER J	FABRIC	100% Polyester Trade Mark Trevira Cs	150.000	• En 1021 - 1&2 [Cigarette & Match] • Bs 5852 Ignition Source 5 [Crib5]
	SPRADLING	SILVERTEX	ARTIFICIAL LEATHER	Vinyl / Urethane Topcoat Topcoat: Vinyl - Backing: 100% Polyester Hi-Loft™	300.000	• En 1021 - 1&2 [Cigarette & Match]
CLASS D	CAMIRA	BLAZER	FABRIC	100% Virgin Wool	50.000	• En 1021 - 1&2 [Cigarette & Match] • <b>Optional:</b> Bs 5852 Ignition Source 5 When Fr Treated
	CAMIRA	OCEANIC	FABRIC	100% Post-Consumer Recycled Polyester, Including 50% Eequal® Yarn	100.000	• En 1021 - 1&2 [Cigarette & Match] • <b>Optional:</b> Crib5
	CAMIRA	REGENT	FABRIC	100% Flame Retardant Polyester	50.000	• En 1021 - 1&2 [Cigarette & Match] • Bs 5852 Ignition Source 5 [Crib5]
CLASS HD1	ORION	BOGOTA	REAL LEATHER	-	-	• <b>Optional:</b> UNI EN ISO 1021-1/2 • <b>Optional:</b> BS 5852 1991 Sec. 4NI/0-1 • <b>Optional:</b> California TB 117

# FABRIC COMPATIBILITY LIST



FABRIC COMPATIBILITY LIST

Document No: KAL-LS-016  
 First Release Date: 01.03.2022  
 Revision No: 15  
 Revision Date: 15.07.2024



	NEW SABINE A	NINO A	NEW KING A	CANYON A	XTREME CAMIRA A	ERA CAMIRA A	ATHENA A	GANNA A	TWISTER A	ROCCIA FIDIVI B	ANGOLA B	ASPECT CAMIRA B	QUEST CAMIRA B	TIME FIDIVI B	VALENCIA SPRADLING B	LOOP B	MILANO FIDIVI B	FOX FIDIVI C
03 CHAIR	✗	✗	●	●	✗	✗	✗	✗	✗	✗	✗	✗	✗	✗	✗	✗	✗	✗
ALEK CHAIR / LOUNGE	●	●	●	●	●	○	●	●	○	●	●	●	○	●	●	●	●	●
BOB	●	●	●	●	○	○	●	●	○	●	●	○	●	●	●	●	●	●
BOLD	●	●	●	●	○	○	●	●	○	●	●	○	●	●	●	●	●	●
BONNY	●	●	●	●	●	○	●	●	○	●	●	○	●	○	●	○	●	●
BOOM SINGLE	●	●	●	○	○	○	●	●	○	●	●	○	●	●	●	●	●	●
BOOM SOFA	●	●	●	○	○	○	●	●	○	●	●	○	●	●	●	●	●	●
BOOM POUF	●	●	●	○	○	○	●	●	○	●	●	○	●	●	●	●	●	●
BOXER	●	●	●	○	○	○	●	●	○	●	●	○	●	●	●	●	●	●
DAISY CHAIR	●	●	●	●	●	○	●	●	○	●	●	○	●	✗	●	●	●	○
DAISY LOUNGE	●	●	●	●	●	○	●	●	○	●	●	○	●	✗	●	●	●	●
DANTE CHAIR / BAR	●	●	●	●	●	○	●	●	○	●	●	○	●	○	●	●	●	●
DIA 50	●	●	●	●	●	○	●	●	○	●	●	○	●	●	●	●	●	●
DION CHAIR / BAR	●	●	●	●	●	○	●	●	○	●	●	○	●	○	●	●	●	●
DION LOUNGE	●	●	●	●	●	○	●	●	○	●	●	○	●	○	●	●	●	●
DOT CHAIR / BAR	●	●	●	●	●	○	●	●	○	●	●	○	●	○	●	●	●	●
DRAGE	●	●	●	○	○	○	●	●	○	●	●	○	●	●	●	●	●	●
DUPONT CHAIR / LOUNGE / BAR	●	●	●	●	●	○	●	●	○	●	●	○	●	○	●	●	●	●
DURGU	●	●	●	○	○	○	●	●	○	●	●	○	●	✗	●	●	●	●
FERNO	●	●	●	○	○	○	●	●	○	●	●	○	●	○	●	●	●	●
FLINT	●	●	●	●	○	○	●	●	○	●	●	○	●	●	●	●	●	●
GO LARGE	●	●	●	○	○	○	●	●	○	●	●	○	●	●	●	●	●	●
GRACE	●	●	●	●	●	○	●	●	○	●	●	○	●	○	●	●	●	●
ISOLA	●	●	●	○	○	○	●	●	○	●	●	○	●	●	●	●	●	●
ISOLA LOUNGE	●	●	●	○	○	○	●	●	○	●	●	○	●	○	●	●	●	●
JASPER	●	●	●	○	●	○	●	●	○	●	●	○	●	○	●	●	●	●
KAV	●	●	●	○	○	○	●	●	○	●	●	○	●	○	●	●	●	●
LAMY CHAIR	●	●	●	○	●	○	●	●	○	●	●	○	●	○	●	●	●	●
LAMY LOUNGE	●	●	●	○	●	○	●	●	○	●	●	○	●	○	●	●	●	●
LAMY POUF	●	●	●	○	●	○	●	●	○	●	●	○	●	○	●	●	●	●
LED	●	●	●	●	○	○	●	●	○	●	●	○	●	●	●	●	●	●
LOFT	●	●	●	●	○	○	●	●	○	●	●	○	●	●	●	●	●	●
MABEL / MABEL COMFORT	●	●	●	●	○	○	●	●	○	●	●	○	●	●	●	●	●	●
MATT	●	●	●	●	○	○	●	●	○	●	●	○	●	●	●	●	●	●
MAY	●	●	●	●	○	○	●	●	○	●	●	○	●	●	●	●	●	●

Suitable ●  
 Not recommended by B&T but can be used on demand ○  
 Not suitable ✗

	LASER J FIDIVI C	SILVERTEX SPRADLING C	VITA CAMIRA C	MAIN LINE FLAX CAMIRA C	OCEANIC CAMIRA D	BLAZER CAMIRA D	REGENT CAMIRA D	BOGOTA H1
03 CHAIR	✗	✗	●	✗	✗	✗	✗	✗
ALEK CHAIR / LOUNGE	●	●	●	●	●	●	●	●
BOB	●	○	●	●	○	●	●	●
BOLD	●	●	○	●	●	●	●	●
BONNY	●	●	●	●	●	●	●	●
BOOM SINGLE	●	○	○	●	●	●	●	●
BOOM SOFA	○	○	○	●	○	●	●	●
BOOM POUF	●	○	○	●	○	●	●	●
BOXER	●	●	●	●	●	●	●	●
DAISY CHAIR	●	●	●	●	●	●	●	●
DAISY LOUNGE	●	●	●	●	●	●	●	●
DANTE CHAIR / BAR	●	●	●	●	●	●	●	●
DIA 50	●	●	●	●	●	●	●	●
DION CHAIR / BAR	●	●	●	●	●	●	●	●
DION LOUNGE	●	●	●	●	●	●	●	●
DOT CHAIR / BAR	●	●	●	●	●	●	●	●
DRAGE	●	●	●	●	○	●	●	●
DUPONT CHAIR / LOUNGE / BAR	●	●	●	●	●	○	●	●
DURGU	●	○	○	●	○	●	●	●
FERNO	●	●	●	●	●	●	●	●
FLINT	●	●	●	●	●	●	●	●
GO LARGE	●	○	○	●	○	●	●	●
GRACE	●	●	●	●	●	●	●	●
ISOLA	●	○	●	●	●	●	●	●
ISOLA LOUNGE	●	○	●	●	●	●	●	●
JASPER	○	●	○	●	○	●	●	●
KAV	●	●	○	●	○	●	●	●
LAMY CHAIR	●	●	●	●	●	●	●	●
LAMY LOUNGE	●	●	○	●	●	●	●	●
LAMY POUF	●	●	○	●	●	●	●	●
LED	○	○	●	●	○	●	●	●
LOFT	○	●	●	●	○	●	●	●
MABEL / MABEL COMFORT	●	○	●	●	●	●	●	●
MATT	●	○	●	●	●	●	●	●
MAY	●	●	○	●	●	●	●	●

\* Please note that leather is a natural material that becomes soft and stretches over time.

Suitable ●  
 Not recommended by B&T but can be used on demand ○  
 Not suitable ✗



FABRIC COMPATIBILITY LIST

Document No: KAL-LS-016  
 First Release Date: 01.03.2022  
 Revision No: 15  
 Revision Date: 15.07.2024



	NEW SABINE A	NINO A	NEW KING A	CANYON A	XTREME CAMIRA A	ERA CAMIRA A	ATHENA A	GANNA A	TWISTER A	ROCCIA FIDIVI B	ANGOLA B	ASPECT CAMIRA B	QUEST CAMIRA B	TIME FIDIVI B	VALENCIA SPRADLING B	LOOP B	MILANO FIDIVI B	FOX FIDIVI C
MENTOR CHAIR	●	●	●	●	●	○	●	●	○	●	●	○	●	○	●	●	●	●
MENTOR LOUNGE	●	●	●	●	●	○	●	●	○	●	●	○	●	○	●	●	●	●
MIKA CHAIR / BAR STOOL	●	●	●	●	●	○	●	●	○	●	●	○	●	○	●	●	●	●
MILES	●	●	●	●	●	○	●	●	○	●	●	○	●	○	●	●	●	●
MORPH	●	●	●	●	○	○	●	○	○	●	●	○	●	✘	●	●	●	●
MOST	●	●	●	●	○	○	●	●	○	●	●	○	●	○	●	●	●	●
NODA	●	●	●	●	●	○	●	●	○	●	●	○	●	○	●	●	●	●
ODIN CHAIR / BAR	●	●	●	●	●	○	●	●	○	●	●	○	●	○	●	●	●	●
ORA	●	●	●	✘	●	○	●	●	○	●	●	○	●	○	✘	●	●	●
PERA CHAIR / LOUNGE / BAR	●	●	●	●	●	○	●	●	○	●	●	○	●	○	●	●	●	●
PICK	●	●	●	●	○	○	●	●	○	●	●	○	●	○	●	●	●	●
PI	●	●	●	●	○	○	●	●	○	●	●	○	●	○	●	●	●	●
PIU	●	●	●	●	○	○	●	●	○	●	●	○	●	○	●	●	●	●
REGO PLAY	●	●	●	●	●	○	●	○	○	●	●	○	●	○	●	●	●	●
REGO CHAIR	●	●	●	●	●	○	●	●	○	●	●	○	●	○	●	●	●	●
REGO LOUNGE	●	●	●	●	●	○	●	●	○	●	●	○	●	○	●	●	●	●
REST	●	●	●	●	●	○	●	●	○	●	●	○	●	○	●	●	●	●
RIFT BAR	●	●	●	●	●	○	●	●	○	●	●	○	●	○	●	●	●	●
ROLLER	●	●	●	●	○	○	●	●	○	●	●	○	●	○	●	●	●	●
ROUND / ROUND PRIVATES	●	●	●	○	○	○	●	●	○	●	●	○	●	○	●	●	●	●
SIMPLE	●	●	●	●	○	○	●	●	○	●	●	○	●	○	●	●	●	●
SOLE CHAIR / BAR	●	●	●	○	●	○	●	●	○	●	●	○	●	○	●	●	●	●
SOLE LOUNGE	●	●	●	○	●	○	●	●	○	●	●	○	●	○	●	●	●	●
SPIRIT CHAIR	●	●	●	●	●	○	●	●	○	●	●	○	●	○	●	●	●	●
TO BE	●	●	●	○	○	○	●	●	○	●	●	○	●	○	●	●	●	●
ZEN Sofa / Pouf	●	●	○	○	○	●	●	○	○	●	●	○	●	○	●	●	●	●
ZENGER	●	●	●	●	○	○	●	●	○	●	●	○	●	○	●	●	●	●
ZONE	●	●	●	●	●	○	●	●	○	●	●	○	●	○	●	●	●	●

Suitable ●  
 Not recommended by B&T but can be used on demand ○  
 Not suitable ✘

	LASER J FIDIVI C	SILVERTEX SPRADLING C	VITA CAMIRA C	MAIN LINE FLAX CAMIRA C	OCEANIC CAMIRA D	BLAZER CAMIRA D	REGENT CAMIRA D	BOGOTA HD1
MENTOR CHAIR	●	●	○	●	●	●	●	●
MENTOR LOUNGE	●	●	○	●	●	●	●	●
MIKA CHAIR / BAR STOOL	●	●	○	●	●	●	●	●
MILES	○	●	○	●	○	●	●	●
MORPH	●	○	○	●	○	●	●	●
MOST	●	○	●	●	●	●	●	●
NODA	○	○	●	●	○	●	●	●
ODIN CHAIR / BAR	●	●	●	●	●	●	●	●
ORA	●	✘	✘	●	●	●	●	✘
PERA CHAIR / LOUNGE / BAR	●	●	○	●	●	●	●	●
PICK	●	○	●	●	●	●	●	●
PI	●	●	●	●	●	●	●	●
PIU	●	○	●	●	●	●	●	●
REGO PLAY	●	●	○	●	○	●	●	●
REGO CHAIR	●	●	○	●	●	●	●	●
REGO LOUNGE	●	●	○	●	●	●	●	●
REST	●	●	○	●	●	●	●	●
RIFT BAR	●	●	○	●	●	●	●	●
ROLLER	●	●	●	●	●	●	●	●
ROUND / ROUND PRIVATES	●	●	○	●	●	●	●	●
SIMPLE	○	●	○	●	○	●	●	●
SOLE CHAIR / BAR	●	●	○	●	●	●	●	●
SOLE LOUNGE	●	●	○	●	●	●	●	●
SPIRIT CHAIR	●	●	○	●	●	●	●	●
TO BE	●	●	○	●	●	●	●	●
ZEN Sofa / Pouf	○	○	✘	●	○	●	●	●
ZENGER	●	●	●	●	●	●	●	●
ZONE	●	●	○	●	●	●	●	●

\* Please note that leather is a natural material that becomes soft and stretches over time.

Suitable ●  
 Not recommended by B&T but can be used on demand ○  
 Not suitable ✘



The background of the page is a dark teal color. It features several large, overlapping white geometric shapes, including circles and triangles, which create a modern, abstract pattern. The shapes are positioned on the left and bottom-left sides of the page, leaving the right side mostly clear for the text.

MATERIALS &  
FINISHES



# MATERIALS & FINISHES

## METAL / ELECTROSTATIC POWDER COATED



BLACK  
RAL 9005



WHITE  
RAL 9016



SILK GREY  
RAL 7044



TAUPE  
G 876



GREY  
G 458



ANTHRACITE  
RAL 7016



NORDIC LICHEN



CEMENT GREY  
RAL 7033



GREEN GREY  
RAL 7009



PALE BROWN  
RAL 8025



PRECIOUS SAND



BEIGE RED  
RAL 3012



TERRACOTTA  
RAL 8004



BLACK RED  
RAL 3007



GOLD



BRONZE

## WOOD



NATURAL  
(ASH)



DARK MOCHA  
(ASH)



LIGHT MOCHA  
(ASH)



BLACK  
RAL 9005 (ASH)



WHITE  
RAL 110-1 (ASH)



SILK GREY  
RAL 7044 (ASH)



TAUPE  
G 876 (ASH)



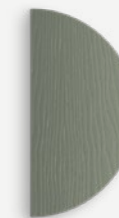
GREY  
G 458 (ASH)



ANTHRACITE  
RAL 7016 (ASH)



NORDIC LICHEN  
(ASH)



CEMENT GREY  
RAL 7033 (ASH)



GREEN GREY  
RAL 7009 (ASH)



PALE BROWN  
RAL 8025 (ASH)



PRECIOUS SAND  
(ASH)



BEIGE RED  
RAL 3012 (ASH)



TERRACOTTA  
RAL 8004 (ASH)



BLACK RED  
RAL 3007 (ASH)



# MATERIALS & FINISHES

## VENEER



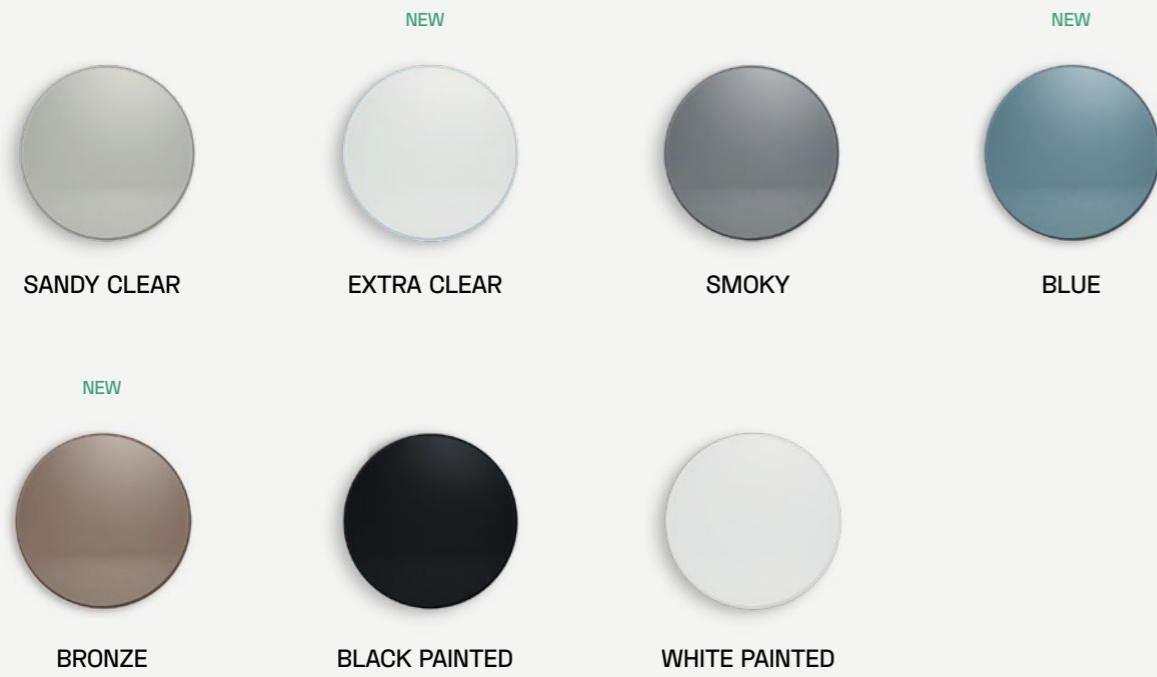
## LACQUER



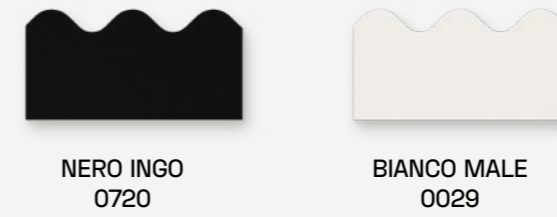


# MATERIALS & FINISHES

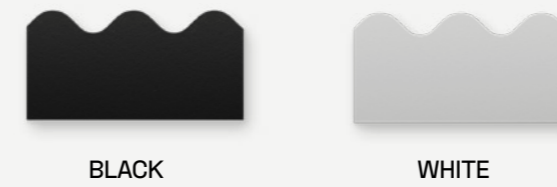
## GLASS



## FENIX



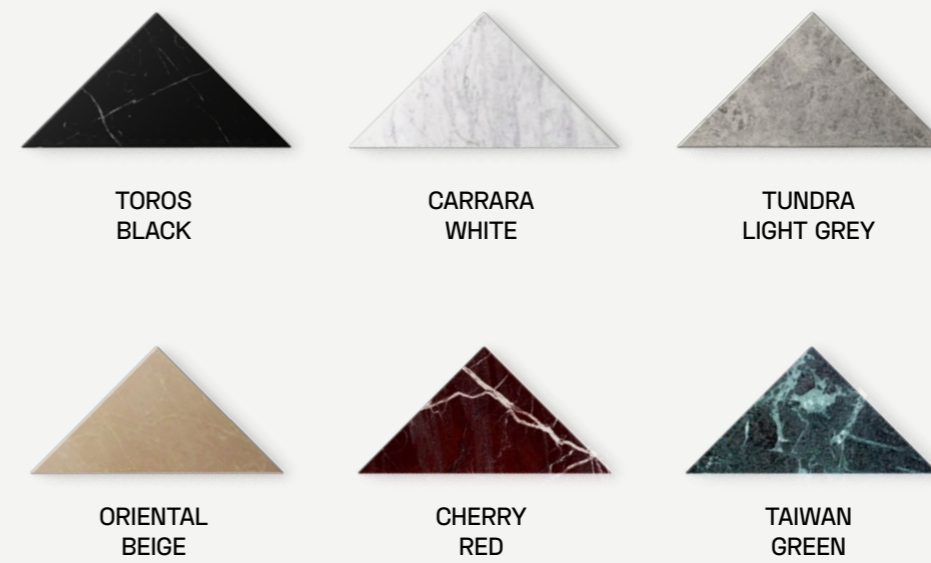
## COMPACT LAMINATE



## LAMINATE



## MARBLE





# MATERIALS & FINISHES

## POLYPROPYLENE

---



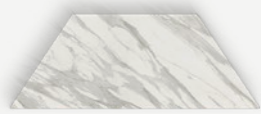
SILK GREY  
RAL 7044



TAUPE  
G 876

## NATURAL STONE

---



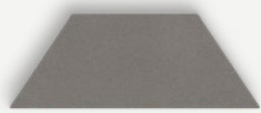
CALACATTA  
GOLD - SILK



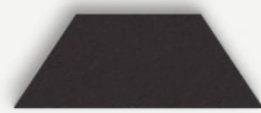
PIETRA DI  
LUNA - SILK



PIETRA DI  
OSSO - SILK



CEMENT - SATIN



NERO ZIMBABWE -  
RIVERWASHED