



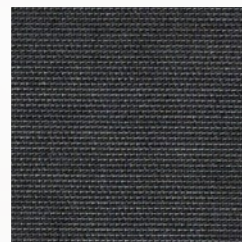
# FABRICS & MESHES

# Sunbrella Meshes & Fabrics in Stock

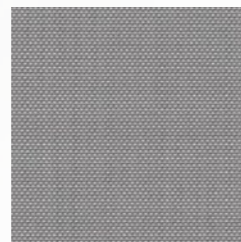
MESHES



**Sunbrella**  
Sling Odyssey  
5928 0043  
AUGUSTINE DENIM



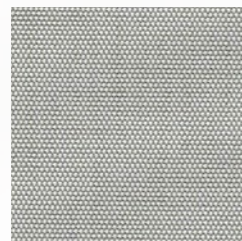
**Sunbrella**  
Sling Odyssey  
SLI 50045 18 137  
LOGAN GRAPHITE



**Sunbrella**  
Sling Odyssey  
SLI 5928 44 137  
AUGUSTINE SILVER

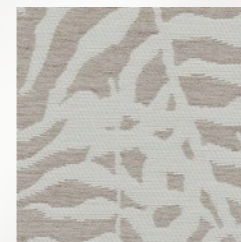


**Sunbrella**  
Sling Odyssey  
SLI 50045 06 137  
LOGAN SAND

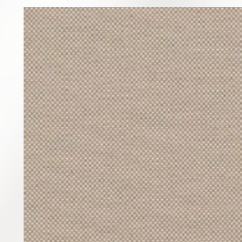


**Sunbrella**  
Sling Odyssey  
SLI 50143 10 137  
SAILING SEAGULL

FABRICS



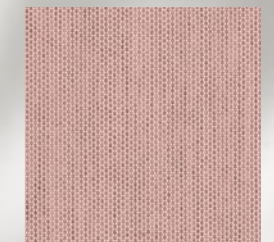
**Sunbrella**  
Bahia Ikebana  
IKE J 369 140  
Uyuni  
Class: E



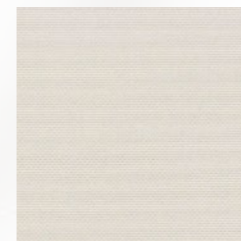
**Sunbrella**  
Odyssey Natte  
NAT 10150 140  
Taupe Chalk  
Class: C



**Sunbrella**  
Odyssey Solids &  
Stripes  
SJA 3756 137  
Lead Chine  
Class: C



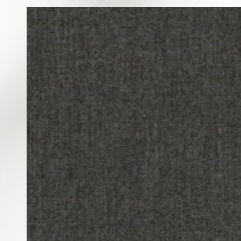
**Sunbrella**  
Odyssey Solids &  
Stripes  
SJA 3965 137  
Blush  
Class: C



**Sunbrella**  
Odyssey Natte  
NAT 10020 140  
White  
Class: C



**Sunbrella**  
Odyssey Solids &  
Stripes  
SJA 3729 137  
Taupe  
Class: C



**Sunbrella**  
Odyssey Solids &  
Stripes  
SJA 3757 137  
Flanelle  
Class: C

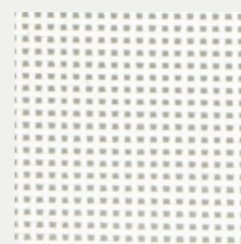


**Sunbrella**  
Odyssey Solids &  
Stripes  
SJA 3778 137  
Quadri Grey  
Class: C

SERGE FERRARI

# BATYLINE ISO

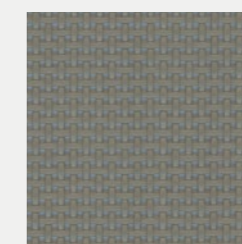
## BATYLINE ISO



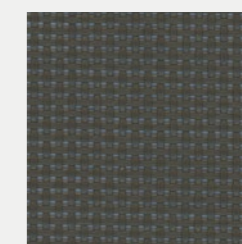
SNOW  
7407-5001



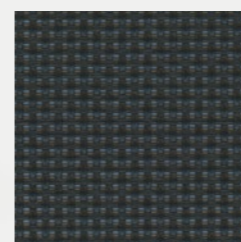
INCENCE  
7407-5376



ASH  
7407-5014



COFFEE  
7407-5015



ANTHRACITE GREY  
7407-5700

Choose the mesh upholstery for the aluminum frame. Both options are mesh and included in retail price.

Batyline Iso offers excellent performance while withstanding spills, splatters and the hustle and bustle of high-traffic areas. Features wider mesh holes, resulting in a slightly transparent look.

**MESH**



**TECHNICAL CHARACTERISTIC**

Weight	500 g/m <sup>2</sup> 14.7 oz/sqyd
Width	180 cm - 70.9 in.
Openess factor	22%
Tensile strength (warp/weft)	240/240 daN/5 cm
Elongation under load 20 daN (warp/weft)	≤2.5% / ≤2.5%
Abrasion resistance	>600,000 double rubs - Heavy Duty >120 000 cycles
Color fastness	GS=4 at 700h / >1,500 QUV
Mould resistance	Methods A, Excellent
Extreme working temperatures	-30°C / +70°C • -22°F / +158°F
Light fastness	8/8 for 1,000 h
Weather resistance	GS = 4 for 700 h
Quality	ISO 9001
Environment	ISO 14001
Energy	ISO 50001

**Certifications, Labels, Warranty**

Recyclable / Greenguard certification - FDES Certification - Base Classification - Eco Bau - Smart Yarn Technology - 5 years warranty

# SUNBRELLA SLING ODYSSEY

Focusing on subtle patterns that read as textures, Sunbrella Sling allows you to achieve an elevated indoor aesthetic in an outdoor setting. Sunbrella Sling blends the strength of PVC with the softness of Sunbrella acrylic yarn for added comfort. Sunbrella Sling is ideal for crafting fully-upholstered furniture pieces for outdoor patios and other traditional sling applications.

MESH

## SLING - ODYSSEY



SLI 50045 07 137  
LOGAN SNOWY



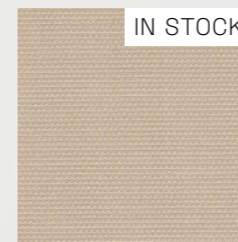
SLI 50143 10 137  
SAILING SEAGULL



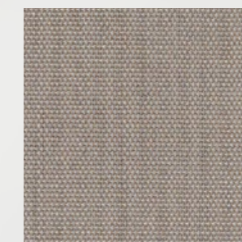
SLI 5928 44 137  
AUGUSTINE SILVER



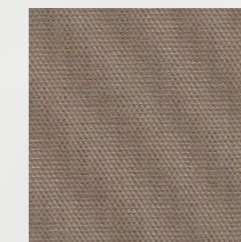
SLI 50045 18 137  
LOGAN GRAPHITE



SLI 50045 06 137  
LOGAN SAND



SLI 50143 19 137  
SAILING SPACE



SLI 50045 02 137  
LOGAN TAUPE





5928 0043  
AUGUSTINE DENIM

Choose the mesh upholstery for the aluminum frame. Both options are mesh and included in retail price.

## SLING - ODYSSEY

### PRODUCT SPECIFICATIONS

	STANDARDS NORMES	SLING AUGUSTINE	SLING LOGAN	SLING SAILING
INFO		20% Sunbrella® Acrylic, 80% PES - PVC 54" / 137 cm width Selvedge is Left / Right	58.8% Sunbrella® Non-Phthalate PVC, 22.1% Sunbrella® Polyester, 19.1% Sunbrella® Acrylic 54" / 137 cm width Selvedge is Left / Right	47.2% Sunbrella® Non-Phthalate PVC, 35% Sunbrella® Acrylic, 17.8% Sunbrella® Polyester 54" / 137 cm width Selvedge is Left / Right
VARRANTY		We stand behind our fabrics with a guarantee that's best in the industry: a 5-year limited warranty for upholstery fabrics, specialty fabrics and decorative shade fabrics.		
HOW TO CLEAN		For easy day-to-day maintenance of your Sunbrella fabric: 1-Brush off loose dirt before it becomes embedded 2-Wipe up spills as soon as they occur, and spot-clean fabric before stains set.		
ZERO LANDFILL		 For over 30 years, Sunbrella® has recycled its industrial wastes such as yarn and packaging. Today, every Sunbrella® manufacturing facility around the globe sends absolutely no waste to the landfill.		
COMPOSITION		11% Sunbrella® Acrylic 25% Polyester 64% PVC	19% Sunbrella® Acrylic 22% Polyester 59% PVC	35% Sunbrella® Acrylic 17.8% Polyester 47.2% PVC
FINISH		Water-Repellent & Stain-Proof		
MINIMUM USEFULL WIDTH	EN 1773	137		
WEIGHT	ISO 3801 g/sqm - g/m²	505	480	580
ROLL LENGTH	LM - ML	40		
SPRAY TEST	ISO 4920 Class/5	-		
COLOUR FASTNESS UV INDOOR	ISO 105B02 Class/8	8		
COLOUR FASTNESS TO WEATHER OUTDOOR	ISO 105B04 - 1000 H Class / 5	4-5		
WASH COLOUR FASTNESS 30°C	ISO 105C06 Class/5	5		
COLOUR FASTNESS DRY FRICTION	ISO 105X12 Class/5	5		
COLOUR FASTNESS WET FRICTION	ISO 105X12 Class/5	5		
CARE INSTRUCTIONS		 Ironing reinforces the treatment		

**Cleaning**  
Vacuum regularly. Wipe with a damp cloth using soap and water or use proprietary upholstery shampoo. For deeper cleaning use bleach or alcohol.



### CERTIFICATIONS

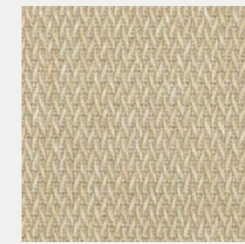


# LIVIO

## LIVIO



01



03



04



12



08



22



21



26



27



28

Livio comes in a range of 10 colours and creates a unique reflection of neutral backgrounds with crosswise yarns.

**Class A**



### TECNICAL CHARACTERISTIC

<b>QUALITY NAME</b>		<b>LIVIO</b>
<b>WIDTH</b>		140 CM +/- 1 CM
<b>WEIGHT</b>		355 GR/M²
<b>COMPOSITION</b>		% 100 OLEFIN
<b>TEST</b>		<b>STANDARD</b>
<b>PILLING</b>		EN ISO 12945-2 : 2000 (5000 revs)
<b>SEAM SLIPPAGE</b>	<b>WEFT</b>	13936-2 : 2004
	<b>WARP</b>	
<b>ABRASSION</b>		EN ISO 12945-2 : 1998
<b>COLOR</b>	<b>RUBBING</b>	BS EN 105-X12 : 2001
	<b>DRY</b>	
	<b>WET</b>	4-5
<b>LIGHT</b>		BS EN 105-B02 : 1994
<b>OIL REPELLENCY</b>		ISO EN 14419
<b>SPRAY TEST</b>		BS EN ISO 1920
<b>FLAMMIBILITY</b>		EN ISO 1021-1
<b>ANTI BACTERIAL</b>		LIS L 1902

### COLOR RESISTANCE

<b>FASTNESS TO</b>	<b>STANDARD</b>	Varies according to the value written next to the product name			
		<b>LOD</b>	<b>OD</b>	<b>OD+</b>	<b>OD++</b>
LIGHT	BS EN ISO 105-B02	7	7	7/8	8
WEATHERING	BS EN ISO 105-B04	6	6/7	7	7/8
UV	ASTM G-154 (1200 Hours)	4	4	4/5	5
WASHING	BS EN ISO 105-C06 40 C	4/5			
SEA WATER	BS EN ISO 105-E02	4/5			
POOL WATER	BS EN ISO 105-E03	4/5			
RUBBING	BS EN ISO 105-X12	4/5			

### CARE AND MAINTANCE INSTRUCTIONS

- 1- Remove any residual soil by lightly brushing or scraping the stain by sponging down with water
  - 2- If further cleaning needed, apply a solution with soap an water.  
Work the solution into stain by lightly scrubbing the area with sponge or very soft bristle brush
  - 3- Remove cleaning solutions with a clean soft towel or sponge to remove the stain and excess cleaning solution.  
[ Repeat step 2 and 3 until stain is removed.]
  - 4- Rinse the affected are throughly remove cleaning solution from the fabric
- Vacuum the fabric prior to cleaning
- Do not be alarmed if stain is not removed after first application and removal of cleaning solution
- If the fabric can be removed from furniture it may be cleaned in a mild soap and warm water (40 C° ) solution in washing machine and dried in an environment also less then 40 C°.
- Do not steam press or dry in electric or gas dryers. Allow fabric to be air dried naturally

### REMARKS

Do not leave your product after 50 C° outside temperature under directly sunlight

Results can be vary region by region

The values for the products my have a varition of +/- %5

Art Picture is for indoor use only



# MIRELLA

## MIRELLA

---



01



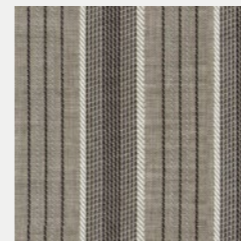
09



24



23



25

Mirella comes with 5 different compositions of thin and thick stripes. This mix is ideal to create out of the ordinary outdoor spaces.

**Class A**



### TECNICAL CHARACTERISTIC

<b>QUALITY NAME</b>		<b>MIRELLA</b>
<b>WIDTH</b>		140 CM +/- 1 CM
<b>WEIGHT</b>		206 GR/M²
<b>COMPOSITION</b>		% 100 OLEFIN
<b>TEST</b>		<b>STANDARD</b>
<b>PILLING</b>		EN ISO 12945-2 : 2000 (5000 revs) 4
<b>SEAM SLIPPAGE</b>	<b>WEFT</b>	13936-2 : 2004 2,5 mm
	<b>WARP</b>	
<b>ABRASSION</b>		EN ISO 12945-2 : 1998 13.000
<b>COLOR</b>	<b>RUBBING DRY</b>	BS EN 105-X12 : 2001 4-5
	<b>WET</b>	
	<b>LIGHT</b>	BS EN 105-B02 : 1994 7-8
<b>OIL REPELLENCY</b>		ISO EN 14419 3
<b>SPRAY TEST</b>		BS EN ISO 1920 4-5
<b>FLAMMIBILITY</b>		EN ISO 1021-1 Pass
<b>ANTI BACTERIAL</b>		LIS L 1902 Pass

### COLOR RESISTANCE

<b>FASTNESS TO</b>	<b>STANDARD</b>	Varies according to the value written next to the product name			
		<b>LOD</b>	<b>OD</b>	<b>OD+</b>	<b>OD++</b>
LIGHT	BS EN ISO 105-B02	7	7	7/8	8
WEATHERING	BS EN ISO 105-B04	6	6/7	7	7/8
UV	ASTM G-154 (1200 Hours)	4	4	4/5	5
WASHING	BS EN ISO 105-C06 40 C	4/5			
SEA WATER	BS EN ISO 105-E02	4/5			
POOL WATER	BS EN ISO 105-E03	4/5			
RUBBING	BS EN ISO 105-X12	4/5			

### CARE AND MAINTANCE INSTRUCTIONS

- 1- Remove any residual soil by lightly brushing or scraping the stain by sponging down with water
  - 2- If further cleaning needed, apply a solution with soap an water. Work the solution into stain by lightly scrubbing the area with sponge or very soft bristle brush
  - 3- Remove cleaning solutions with a clean soft towel or sponge to remove the stain and excess cleaning solution. ( Repeat step 2 and 3 until stain is removed.)
  - 4- Rinse the affected are throughly remove cleaning solution from the fabric
- Vacuum the fabric prior to cleaning
- Do not be alarmed if stain is not removed after first application and removal of cleaning solution
- If the fabric can be removed from furniture it may be cleaned in a mild soap and warm water (40 C° ) solution in washing machine and dried in an environment also less then 40 C°.
- Do not steam press or dry in electric or gas dryers. Allow fabric to be air dried naturally

### REMARKS

Do not leave your product after 50 C° outside temperature under directly sunlight

Results can be vary region by region

The values for the products my have a varition of +/- %5

Art Picture is for indoor use only

# NARIO

Nario has a range of 8 different colours that create a beautiful harmony when combined together in outdoor spaces.

Class A

## NARIO



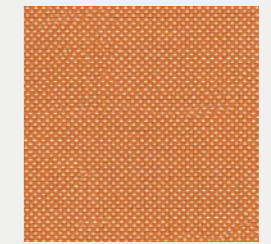
01



100



18



15



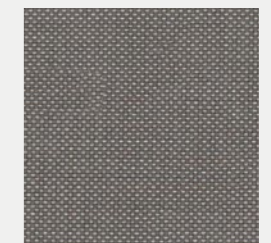
32



28



33



34



### TECNICAL CHARACTERISTIC

QUALITY NAME		NARIO	
WIDTH		140 CM +/- 1 CM	
WEIGHT		263 GR/M²	
COMPOSITION		% 100 OLEFIN	
TEST		STANDARD	
PILLING		EN ISO 12945-2 : 2000 (5000 revs)	4-5
SEAM SLIPPAGE	WEFT	13936-2 : 2004	4,8 mm
	WARP		4,6 mm
ABRASSION		EN ISO 12945-2 : 1998	23.000
COLOR	RUBBING	BS EN 105-X12 : 2001	4-5
	WET		4-5
	LIGHT	BS EN 105-B02 : 1994	7-8
OIL REPELLENCY		ISO EN 14419	3
SPRAY TEST		BS EN ISO 1920	4-5
FLAMMIBILITY		EN ISO 1021-1	Pass
ANTI BACTERIAL		LIS L 1902	Pass

### COLOR RESISTANCE

FASTNESS TO	STANDARD	Varies according to the value written next to the product name			
		LOD	OD	OD+	OD++
LIGHT	BS EN ISO 105-B02	7	7	7/8	8
WEATHERING	BS EN ISO 105-B04	6	6/7	7	7/8
UV	ASTM G-154 (1200 Hours)	4	4	4/5	5
WASHING	BS EN ISO 105-C06 40 C	4/5			
SEA WATER	BS EN ISO 105-E02	4/5			
POOL WATER	BS EN ISO 105-E03	4/5			
RUBBING	BS EN ISO 105-X12	4/5			

### CARE AND MAINTANCE INSTRUCTIONS

- 1- Remove any residual soil by lightly brushing or scraping the stain by sponging down with water
  - 2- If further cleaning needed, apply a solution with soap an water. Work the solution into stain by lightly scrubbing the area with sponge or very soft bristle brush
  - 3- Remove cleaning solutions with a clean soft towel or sponge to remove the stain and excess cleaning solution. [ Repeat step 2 and 3 until stain is removed.]
  - 4- Rinse the affected are throughly remove cleaning solution from the fabric
- Vacuum the fabric prior to cleaning
- Do not be alarmed if stain is not removed after first application and removal of cleaning solution
- If the fabric can be removed from furniture it may be cleaned in a mild soap and warm water (40 C° ) solution in washing machine and dried in an environment also less then 40 C°.
- Do not steam press or dry in electric or gas dryers. Allow fabric to be air dried naturally

### REMARKS

Do not leave your product after 50 C° outside temperature under directly sunlight

Results can be vary region by region

The values for the products my have a varition of +/- %5

Art Picture is for indoor use only

# TELMA

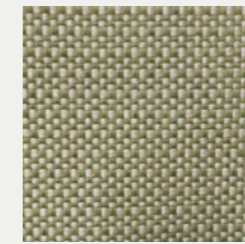
TELMA



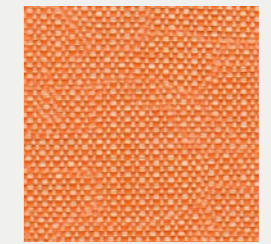
101



103



15



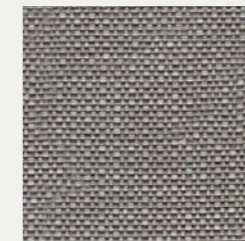
108



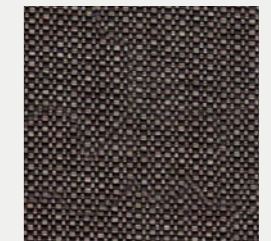
122



22



126



128

Telma has a range of 8 solid colours and reflects the beautiful effect of two-coloured linen weaving.

**Class A**



### TECNICAL CHARACTERISTIC

<b>QUALITY NAME</b>		<b>TELMA</b>	
<b>WIDTH</b>		140 CM +/- 1 CM	
<b>WEIGHT</b>		343 GR/M²	
<b>COMPOSITION</b>		% 100 OLEFIN	
<b>TEST</b>		<b>STANDARD</b>	
<b>PILLING</b>		EN ISO 12945-2 : 2000 (5000 revs)	4-5
<b>SEAM SLIPPAGE</b>	<b>WEFT</b>	13936-2 : 2004	4,8 mm
	<b>WARP</b>		4,6 mm
<b>ABRASSION</b>		EN ISO 12945-2 : 1998	50.000
<b>COLOR</b>	<b>RUBBING</b>	<b>DRY</b>	BS EN 105-X12 : 2001
		<b>WET</b>	4-5
	<b>LIGHT</b>	BS EN 105-B02 : 1994	7-8
<b>OIL REPELLENCY</b>		ISO EN 14419	3
<b>SPRAY TEST</b>		BS EN ISO 1920	4-5
<b>FLAMMIBILITY</b>		EN ISO 1021-1	Pass
<b>ANTI BACTERIAL</b>		LIS L 1902	Pass

### COLOR RESISTANCE

<b>FASTNESS TO</b>	<b>STANDARD</b>	Varies according to the value written next to the product name			
		<b>LOD</b>	<b>OD</b>	<b>OD+</b>	<b>OD++</b>
LIGHT	BS EN ISO 105-B02	7	7	7/8	8
WEATHERING	BS EN ISO 105-B04	6	6/7	7	7/8
UV	ASTM G-154 (1200 Hours)	4	4	4/5	5
WASHING	BS EN ISO 105-C06 40 C	4/5			
SEA WATER	BS EN ISO 105-E02	4/5			
POOL WATER	BS EN ISO 105-E03	4/5			
RUBBING	BS EN ISO 105-X12	4/5			

### CARE AND MAINTANCE INSTRUCTIONS

- 1- Remove any residual soil by lightly brushing or scraping the stain by sponging down with water
  - 2- If further cleaning needed, apply a solution with soap an water.  
Work the solution into stain by lightly scrubbing the area with sponge or very soft bristle brush
  - 3- Remove cleaning solutions with a clean soft towel or sponge to remove the stain and excess cleaning solution.  
( Repeat step 2 and 3 until stain is removed.)
  - 4- Rinse the affected are throughly remove cleaning solution from the fabric
- Vacuum the fabric prior to cleaning
- Do not be alarmed if stain is not removed after first application and removal of cleaning solution
- If the fabric can be removed from furniture it may be cleaned in a mild soap and warm water (40 C° ) solution in washing machine and dried in an environment also less then 40 C°.
- Do not steam press or dry in electric or gas dryers. Allow fabric to be air dried naturally

### REMARKS

Do not leave your product after 50 C° outside temperature under directly sunlight

Results can be vary region by region

The values for the products my have a varition of +/- %5

Art Picture is for indoor use only

# VERO

VERO



101



01



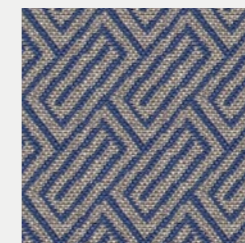
10



109



24



23



25

Vero comes in a range of 7 different colours and has a holistic design understanding together with modern patterns and glossy, elegant look.

**Class A**



### TECNICAL CHARACTERISTIC

<b>QUALITY NAME</b>		<b>VERO</b>	
<b>WIDTH</b>		140 CM +/- 1 CM	
<b>WEIGHT</b>		318 GR/M²	
<b>COMPOSITION</b>		% 100 OLEFIN	
<b>TEST</b>		<b>STANDARD</b>	
<b>PILLING</b>		EN ISO 12945-2 : 2000 (5000 revs)	4
<b>SEAM SLIPPAGE</b>	<b>WEFT</b>	13936-2 : 2004	5,5 mm
	<b>WARP</b>		3,1 mm
<b>ABRASSION</b>		EN ISO 12945-2 : 1998	18.000
<b>COLOR</b>	<b>RUBBING</b>	BS EN 105-X12 : 2001	4-5
	<b>DRY</b>		4-5
	<b>WET</b>	7-8	
<b>OIL REPELLENCY</b>		ISO EN 14419	3
<b>SPRAY TEST</b>		BS EN ISO 1920	4-5
<b>FLAMMIBILITY</b>		EN ISO 1021-1	Pass
<b>ANTI BACTERIAL</b>		LIS L 1902	Pass

### COLOR RESISTANCE

<b>FASTNESS TO</b>	<b>STANDARD</b>	Varies according to the value written next to the product name			
		<b>LOD</b>	<b>OD</b>	<b>OD+</b>	<b>OD++</b>
LIGHT	BS EN ISO 105-B02	7	7	7/8	8
WEATHERING	BS EN ISO 105-B04	6	6/7	7	7/8
UV	ASTM G-154 (1200 Hours)	4	4	4/5	5
WASHING	BS EN ISO 105-C06 40 C	4/5			
SEA WATER	BS EN ISO 105-E02	4/5			
POOL WATER	BS EN ISO 105-E03	4/5			
RUBBING	BS EN ISO 105-X12	4/5			

### CARE AND MAINTANCE INSTRUCTIONS

- 1- Remove any residual soil by lightly brushing or scraping the stain by sponging down with water
  - 2- If further cleaning needed, apply a solution with soap an water.  
Work the solution into stain by lightly scrubbing the area with sponge or very soft bristle brush
  - 3- Remove cleaning solutions with a clean soft towel or sponge to remove the stain and excess cleaning solution.  
[ Repeat step 2 and 3 until stain is removed.]
  - 4- Rinse the affected are throughly remove cleaning solution from the fabric
- Vacuum the fabric prior to cleaning
- Do not be alarmed if stain is not removed after first application and removal of cleaning solution
- If the fabric can be removed from furniture it may be cleaned in a mild soap and warm water (40 C° ) solution in washing machine and dried in an environment also less then 40 C°.
- Do not steam press or dry in electric or gas dryers. Allow fabric to be air dried naturally

### REMARKS

Do not leave your product after 50 C° outside temperature under directly sunlight

Results can be vary region by region

The values for the products my have a varition of +/- %5

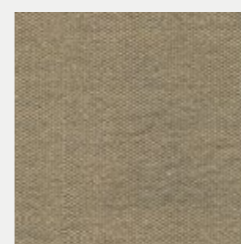
Art Picture is for indoor use only



# PLAIN MELANGE

Water-repellent fabric with anti-stain and anti-mould treatment, high colour fastness and resistance to sunlight exposure. Plain Melange is characterised by its design, fineness, and the soft touch. It can be used in- and outdoor.

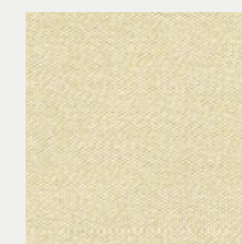
PLAIN MELANGE



016



018



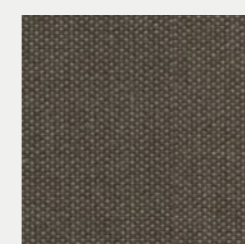
020



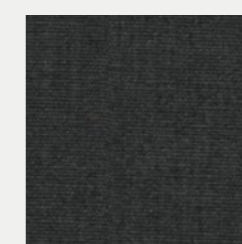
070



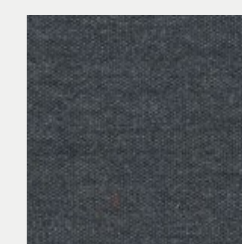
072



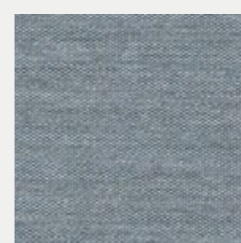
079



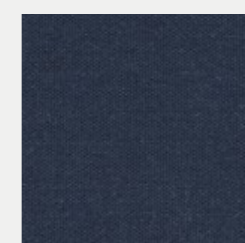
583



690



693



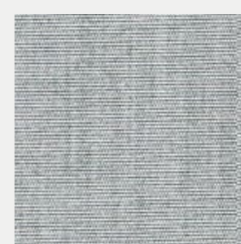
694



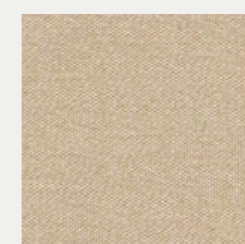
783



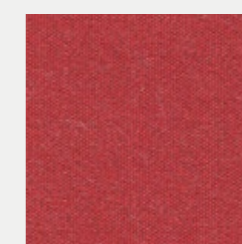
833



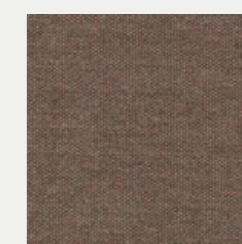
834



835



870



872



874



875



876



879



882



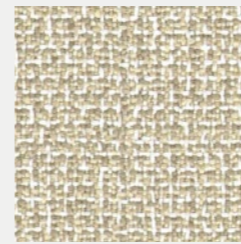
**PRODUCT SPECIFICATIONS**

<b>TIPOLOGY</b>	100% solution dyed acrylic outdoor fabric.
<b>CHARACTERISTICS</b>	Water-repellent fabric with anti-stain and anti-mould treatment, high colour fastness and resistant to sunlight exposure. The fabric is characterised by its design and fineness, by the soft touch and can be used in- and outdoor.
<b>APPLICATIONS</b>	Indoor and outdoor furniture: upholstery, cushions, draperies sheers. Suitable also for marine upholstery.
<b>WARRANTY</b>	Irisun Living fabrics are guaranteed for 5 years concerning the UV resistance and the colour fastness. The warranty is valid in case of respect of the application of the fabric and of the instructions for care and cleaning.
<b>FEATURES</b>	Uv Rays Protection Shield
	Water Repellent Stain Resistant Mildew Resistant
	Breathable Fearless Fabric
	Bleach Cleanable Fade Resistant
<b>WIDTH</b>	137 cm
<b>ROLL LENGTH</b>	30 m
<b>WEIGHT</b>	240 gr/m <sup>2</sup>
<b>MARTINDALE</b>	15000 cycles
<b>OIL-REPELLENCY</b>	5 off 8
<b>SPRAY TEST</b>	5 off 5
<b>UV COLOUR FASTNESS</b>	7 off 8
<b>COLOUR FASTNESS TO WEATHER</b>	7 off 8
<b>COLOUR FASTNESS AFTER WASHING AT 40 C</b>	5 off 5
<b>FLAME RESISTANCE</b>	CAL TB 117 - 2013 Section 1
<b>FLAME RESISTANCE</b>	Indoor and outdoor furniture: upholstery, cushions, draperies e sheers. Suitable also for marine upholstery.
<b>TOLERANCE</b>	±5%
<b>BIOCIDES</b>	It contains biocidal agent with approved active substances: Octyl Isothiazolinone

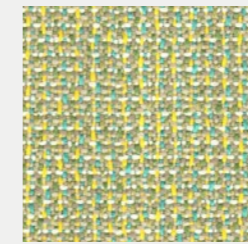
# MATTEO

## MATTEO

---



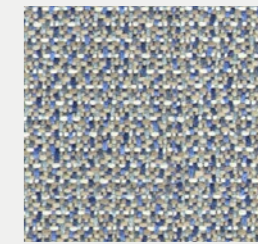
01



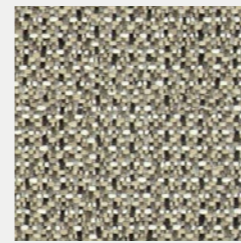
10



09



24



25

Matteo has a range of 5 living colours and creates an energetic contrast between sparkles of colours and backgrounds.

CLASS B



### TECNICAL CHARACTERISTIC

<b>QUALITY NAME</b>		<b>MATTEO</b>
<b>WIDTH</b>		140 CM +/- 1 CM
<b>WEIGHT</b>		463 GR/M²
<b>COMPOSITION</b>		% 100 OLEFIN
<b>TEST</b>		<b>STANDARD</b>
<b>PILLING</b>		EN ISO 12945-2 : 2000 (5000 revs) 5
<b>SEAM SLIPPAGE</b>	<b>WEFT</b>	13936-2 : 2004 3,5 mm
	<b>WARP</b>	
<b>ABRASSION</b>		EN ISO 12945-2 : 1998 28.000
<b>COLOR</b>	<b>RUBBING DRY</b>	BS EN 105-X12 : 2001 4-5
	<b>WET</b>	
	<b>LIGHT</b>	BS EN 105-B02 : 1994 7-8
<b>OIL REPELLENCY</b>		ISO EN 14419 3
<b>SPRAY TEST</b>		BS EN ISO 1920 4-5
<b>FLAMMIBILITY</b>		EN ISO 1021-1 Pass
<b>ANTI BACTERIAL</b>		LIS L 1902 Pass

### COLOR RESISTANCE

<b>FASTNESS TO</b>	<b>STANDARD</b>	Varies according to the value written next to the product name			
		<b>LOD</b>	<b>OD</b>	<b>OD+</b>	<b>OD++</b>
LIGHT	BS EN ISO 105-B02	7	7	7/8	8
WEATHERING	BS EN ISO 105-B04	6	6/7	7	7/8
UV	ASTM G-154 (1200 Hours)	4	4	4/5	5
WASHING	BS EN ISO 105-C06 40 C	4/5			
SEA WATER	BS EN ISO 105-E02	4/5			
POOL WATER	BS EN ISO 105-E03	4/5			
RUBBING	BS EN ISO 105-X12	4/5			

### CARE AND MAINTANCE INSTRUCTIONS

- 1- Remove any residual soil by lightly brushing or scraping the stain by sponging down with water
  - 2- If further cleaning needed, apply a solution with soap an water.  
Work the solution into stain by lightly scrubbing the area with sponge or very soft bristle brush
  - 3- Remove cleaning solutions with a clean soft towel or sponge to remove the stain and excess cleaning solution.  
[ Repeat step 2 and 3 until stain is removed.]
  - 4- Rinse the affected are throughly remove cleaning solution from the fabric
- Vacuum the fabric prior to cleaning
- Do not be alarmed if stain is not removed after first application and removal of cleaning solution
- If the fabric can be removed from furniture it may be cleaned in a mild soap and warm water (40 C° ) solution in washing machine and dried in an environment also less then 40 C°.
- Do not steam press or dry in electric or gas dryers. Allow fabric to be air dried naturally

### REMARKS

- Do not leave your product after 50 C° outside temperature under directly sunlight
- Results can be vary region by region
- The values for the products my have a varition of +/- %5
- Art Picture is for indoor use only

SUNBRELLA

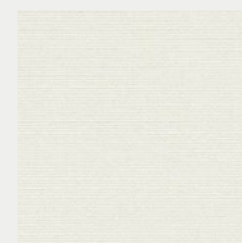
# SOLIDS & STRIPES

ODYSSEY

Solids is the standard classic fabric in our collection. It comes in a range of 50 colours with ottoman, piqué and chiné effects to create a bespoke look. Available in three iconic strips and highly resistant, Solids are adapted to any use.

CLASS C

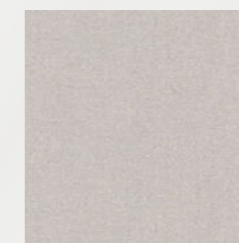
SOLIDS & STRIPES - ODYSSEY



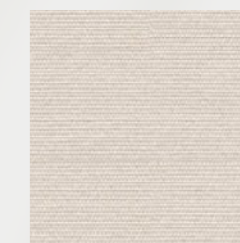
SJA 5404 137  
NATURAL



SJA 3966 137  
MARBLE



SJA 3741 137  
SILVER GREY



SJA 5453 137  
CANVAS



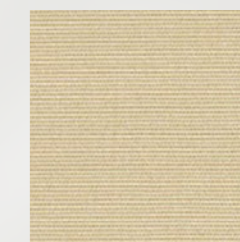
SJA 3780 137  
LIN



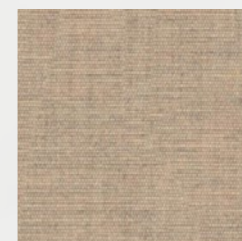
SJA 3988 137  
STONE



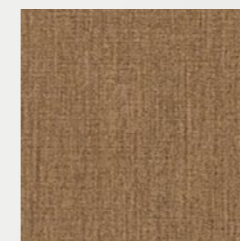
SJA 3706 137  
SHINGLES



SJA 5422 137  
ANTIQUE BEIGE



SJA 48009/00 137  
ARMOR PEBBLE



SJA 5476 137  
HEATHER BEIGE



SJA 3907 137  
TAUPE CHINÉ



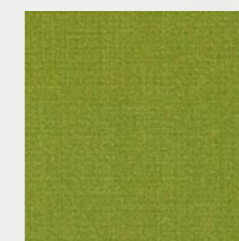
SJA 3729 137  
TAUPE



SJA 3967 137  
MINT



SJA 3970 137  
LICHEN



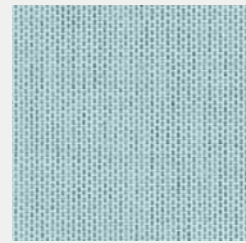
SJA 3738 137  
MACAO



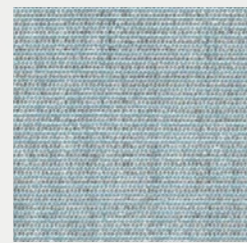
SJA 3987 137  
ALPINE



SJA 3944 137  
CHARRON



SJA 3964 137  
CURAÇAO



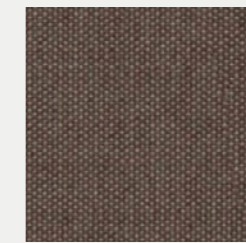
SJA 3793 137  
MINERAL BLUE CHINÉ



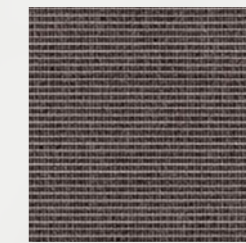
SJA 5420 137  
MINERAL BLUE



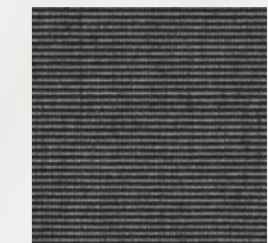
SJA 3737 137  
ARDOISE



SJA 3127 137  
MINK BROWN



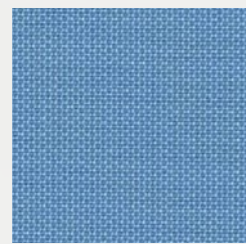
SJA 3792 137  
DARK SMOKE



SJA 3705 137  
CHARCOAL



SJA 5416 137  
ARUBA



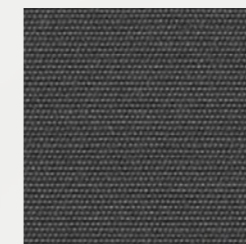
SJA 3990 137  
MYOSOTIS



SJA 3941 137  
ADRIATIC



SJA 3717 137  
RIVIERA BLUE



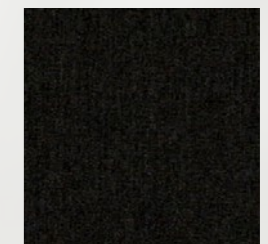
SJA 3906 137  
CARBON



SJA 3756 137  
LEAD CHINÉ



SJA 3757 137  
FLANELLE



SJA 3758 137  
SOOTY



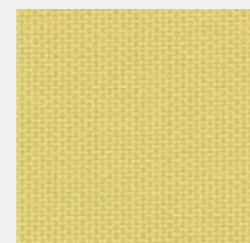
SJA 5499 137  
TRUE BLUE



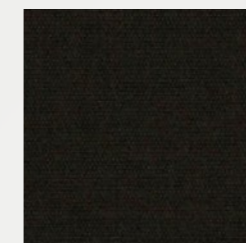
SJA 3942 137  
BLUE STORM



SJA 3991 137  
BLAZER



SJA 3984 137  
CANARY



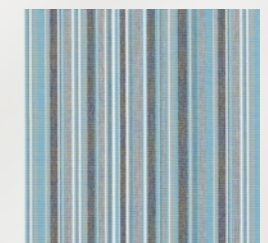
SJA 5408 137  
BLACK



SJA 3778 137  
QUADRI GREY



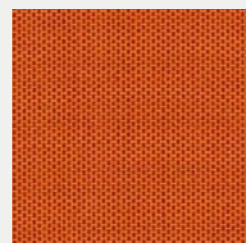
SJA 3777 137  
PORTO GREY CHINÉ



SJA 3776 137  
PORTO BLUE CHINÉ



SJA 3938 137  
MIMOSA



SJA 3969 137  
PUMPKIN



SJA 3939 137  
PAPRIKA



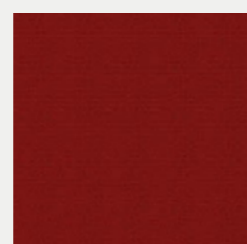
SJA 3965 137  
BLUSH



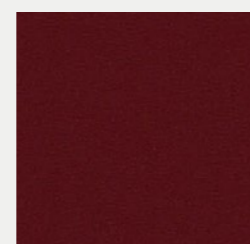
SJA 5477 137  
LOGO RED



SJA 3968 137  
PEPPER



SJA 3728 137  
PARIS RED





SJA 5436 137  
BURGUNDY



## SOLIDS & STRIPES - ODYSSEY

### PRODUCT SPECIFICATIONS

	STANDARDS NORMES	SOLIDS & STRIPES
INFO		100% Sunbrella Acrylic 54" / 137 cm width Selvedge is Left / Right
VARRANTY		We stand behind our fabrics with a guarantee that's best in the industry: a 5-year limited warranty for upholstery fabrics, specialty fabrics and decorative shade fabrics.
HOW TO CLEAN		For easy day-to-day maintenance of your Sunbrella fabric: 1-Brush off loose dirt before it becomes embedded 2-Wipe up spills as soon as they occur, and spot-clean fabric before stains set.
ZERO LANDFILL		 For over 30 years, Sunbrella® has recycled its industrial wastes such as yarn and packaging. Today, every Sunbrella® manufacturing facility around the globe sends absolutely no waste to the landfill.
COMPOSITION		100% Sunbrella® Acrylic
FINISH		Water-Repellent & Stain-Proof
MINIMUM USEFULL WIDTH	EN 1773	137
WEIGHT	ISO 3801 g/sqm - g/m²	260
ROLL LENGTH	LM - ML	50
SPRAY TEST	ISO 4920 Class/5	5
COLOUR FASTNESS UV INDOOR	ISO 105B02 Class/8	8
COLOUR FASTNESS TO WEATHER OUTDOOR	ISO 105B04 - 1000 H Class / 5	4-5
WASH COLOUR FASTNESS 30°C	ISO 105C06 Class/5	5
COLOUR FASTNESS DRY FRICTION	ISO 105X12 Class/5	5
COLOUR FASTNESS WET FRICTION	ISO 105X12 Class/5	5
CARE INSTRUCTIONS		 Ironing reinforces the treatment

**Cleaning**  
Vacuum regularly. Wipe with a damp cloth using soap and water or use proprietary upholstery shampoo.  
For deeper cleaning use bleach or alcohol.

### CERTIFICATIONS



SUNBRELLA  
**NATTÉ**  
ODYSSEY

Timeless and versatile, Natté is a classic upholstery fabric. Natural to the eye and elegant to the touch, it is ideal for seats and accessories. Natté comes in a rich palette of colours, luxurious neutrals and new designs in invigorating, sophisticated hues.

NATTE - ODYSSEY



NAT 10020 140  
WHITE



NAT 10014 140  
NATURE



NAT 10021 140  
CANVAS



NAT 10151 140  
LINEN CHALK



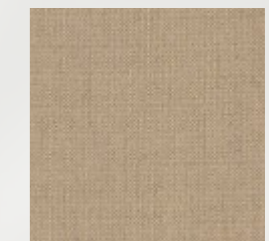
NAT 10152 140  
GRAUMEL CHALK



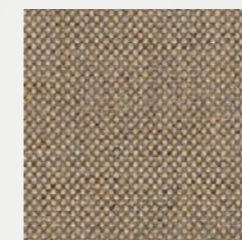
NAT 10155 140  
TAUPE CHALK



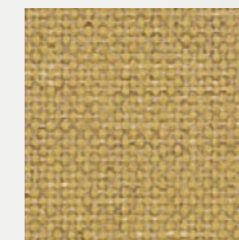
NAT 10150 140  
HEATHER CHALK



NAT 10028 140  
HEATHER BEIGE



NAT 10029 140  
HEATHER GREY



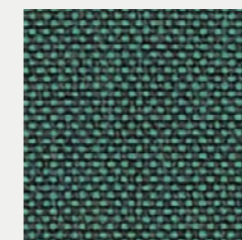
NAT 10235 140  
AMBER



NAT 10234 140  
FLAMINGO



NAT 10233 140  
PISTACHIO



NAT 10232 140  
IVY



NAT 10025 140  
FROSTY CHINÉ



NAT 10064 140  
CARBON SKY

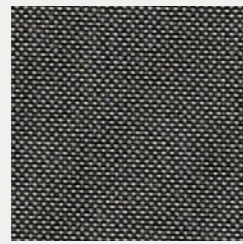


NAT 10040 140  
NATURE GREY





NAT 10065 140  
CARBON BEIGE



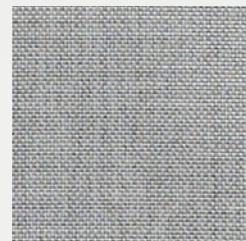
NAT 10059 140  
DARK TAUPE



NAT 10231 140  
CARMINE



NAT 10101 140  
TONKA



NAT 10022 140  
GREY CHINE



NAT 10063 140  
CHARCOAL CHINÉ





NAT 10030 140  
SOOTY



**NATTE - ODYSSEY**

PRODUCT SPECIFICATIONS

	STANDARDS NORMES	NATTE
INFO		100% Sunbrella Acrylic 55" / 140 cm width Selvedge is Left / Right
VARRANTY		We stand behind our fabrics with a guarantee that's best in the industry: a 5-year limited warranty for upholstery fabrics, specialty fabrics and decorative shade fabrics.
HOW TO CLEAN		For easy day-to-day maintenance of your Sunbrella fabric: 1-Brush off loose dirt before it becomes embedded 2-Wipe up spills as soon as they occur, and spot-clean fabric before stains set.
ZERO LANDFILL		 For over 30 years, Sunbrella® has recycled its industrial wastes such as yarn and packaging. Today, every Sunbrella® manufacturing facility around the globe sends absolutely no waste to the landfill.
COMPOSITION		100% Sunbrella® Acrylic
FINISH		Water-Repellent & Stain-Proof
MINIMUM USEFULL WIDTH	EN 1773	140
WEIGHT	ISO 3801 g/sqm - g/m²	275
ROLL LENGTH	LM - ML	50
SPRAY TEST	ISO 4920 Class/5	5
COLOUR FASTNESS UV INDOOR	ISO 105B02 Class/8	8
COLOUR FASTNESS TO WEATHER OUTDOOR	ISO 105B04 - 1000 H Class / 5	4-5
WASH COLOUR FASTNESS 30°C	ISO 105C06 Class/5	5
COLOUR FASTNESS DRY FRICTION	ISO 105X12 Class/5	5
COLOUR FASTNESS WET FRICTION	ISO 105X12 Class/5	5
CARE INSTRUCTIONS		 Ironing reinforces the treatment

**Cleaning**  
Vacuum regularly. Wipe with a damp cloth using soap and water or use proprietary upholstery shampoo. For deeper cleaning use bleach or alcohol.

CERTIFICATIONS



SUNBRELLA

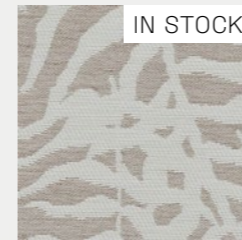
# IKEBANA

BAHIA

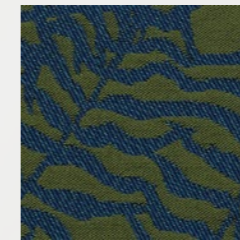
Like a shadow puppet, the design of the Ikebana fabric is displayed across its width, inviting us to enjoy the show. The bold colorful contrasts bring this plant-inspired jacquard to life and transports us to another land. Available in a range of six sparkling colours, Ikebana is ideal for drapes, seats and accessories.

CLASS E

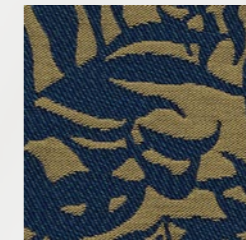
IKEBANA - BAHIA



IKE J369 140  
UYUNI



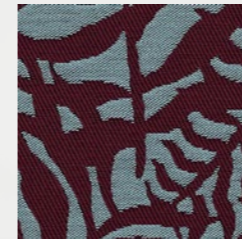
IKE J331 140  
BAYOU



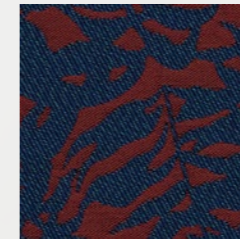
IKE J332 140  
SAFARI



IKE J330 140  
CANOPY





IKE J333 140  
POLAR



IKE J334 140  
CANYON

## IKEBANA - BAHIA

### PRODUCT SPECIFICATIONS

	STANDARDS NORMES	IKEBANA
INFO		55.1181" x 45.0787"   140.00 cm x 114.50 cm repeat 100% Sunbrella Acrylic 55" / 140 cm width Selvedge is Left / Right
VARRANTY		"We stand behind our fabrics with a guarantee that's best in the industry: a 5-year limited warranty for upholstery fabrics, specialty fabrics and decorative shade fabrics."
HOW TO CLEAN		"For easy day-to-day maintenance of your Sunbrella fabric: 1-Brush off loose dirt before it becomes embedded 2-Wipe up spills as soon as they occur, and spot-clean fabric before stains set."
ZERO LANDFILL		 For over 30 years, Sunbrella® has recycled its industrial wastes such as yarn and packaging. Today, every Sunbrella® manufacturing facility around the globe sends absolutely no waste to the landfill.
COMPOSITION		100% Sunbrella Acrylic
FINISH		Water-Repellent & Stain-Proof
MINIMUM USEFULL WIDTH	EN 1773	140
WEIGHT	ISO 3801 g/sqm - g/m²	525
ROLL LENGTH	LM - ML	25
SPRAY TEST	ISO 4920 Class/5	4
COLOUR FASTNESS UV INDOOR	ISO 105B02 Class/8	8
COLOUR FASTNESS TO WEATHER OUTDOOR	ISO 105B04 - 1000 H Class / 5	4-5
WASH COLOUR FASTNESS 30°C	ISO 105C06 Class/5	5
COLOUR FASTNESS DRY FRICTION	ISO 105X12 Class/5	5
COLOUR FASTNESS WET FRICTION	ISO 105X12 Class/5	5
CARE INSTRUCTIONS		 Ironing reinforces the treatment

**Cleaning**  
Vacuum regularly. Wipe with a damp cloth using soap and water or use proprietary upholstery shampoo.  
For deeper cleaning use bleach or alcohol.

### CERTIFICATIONS



# Upholstery Categories

CLASS	BRAND	NAME	TYPE
A	ALYA	LIVIO	FABRIC
	ALYA	MIRELLA	FABRIC
	ALYA	NARIO	FABRIC
	ALYA	TELMA	FABRIC
	ALYA	VERO	FABRIC
	IRUSUN	PLAIN MALANGE	FABRIC
B	ALYA	MATTEO	FABRIC
C	SUNBRELLA	SOLIDS & STRIPES	FABRIC
	SUNBRELLA	NATTE	FABRIC
E	SUNBRELLA	IKEBANA	FABRIC

# Fabric Compatibility List

	LIVIO	MIRELLA	NARIO	TELMA	VERO	PLAIN MELANGE	MATTEO	SOLIDS & STRIPES	NATTE	IKEBANA
	A	A	A	A	A	A	B	C	C	E
REGO PLAY UPHOLSTERED	●	●	●	●	●	●	●	●	●	●
REST SEAT UPHOLSTERED	●	●	●	●	●	●	●	●	●	●
REST UPHOLSTERED	●	●	●	●	●	●	●	●	●	●
ROY	●	✘	●	●	●	●	●	◆	●	●
CLAP SEAT&BACK	●	●	●	●	●	●	●	●	●	●
CLAP FRAME	○	○	○	○	○	○	○	○	○	○
PLAT CUSHION	●	●	●	●	●	●	●	●	●	●
PLAT FRAME	○	○	○	○	○	○	○	○	○	○
PLAT SEAT&BACK	●	●	●	●	●	●	●	●	●	●
DOR CUSHION	●	●	●	●	●	●	●	●	●	●
DOR FRAME	○	○	○	○	○	○	○	○	○	○
DOR SEAT&BACK	●	●	●	●	●	●	●	●	●	●
SET CUSHION	●	●	●	●	●	●	●	●	●	●
SET FRAME	○	○	○	○	○	○	○	○	○	○
SET SEAT&BACK	●	●	●	●	●	●	●	●	●	●
SORBE	●	✘	●	●	●	●	●	◆	●	●

- Suitable
- ◆ Suitable [Excluding Striped Fabrics]
- ✘ Not Suitable
- Fabric Not Suitable / Mesh Suitable